

## Product Datasheet

### HSPA8 Rabbit Polyclonal Antibody (orb295527)

<b>Catalog Number</b>	orb295527
<b>Category</b>	Antibodies
<b>Description</b>	Anti-HSPA8 Polyclonal Antibody is a rabbit polyclonal antibody detecting Lipopolysaccharide-associated protein 1 in ELISA, IHC, WB. Suitable for Bovine, Cricetulus griseus, Danio rerio, Equus caballus, and Chicken. Highlights Affinity Purified: Minimal background and high purity for reliable results. Multi-Application: Validated across multiple applications. Multi-Species: Cross-reactive for translational research.
<b>Clonality</b>	Polyclonal
<b>Species/Host</b>	Rabbit
<b>Isotype</b>	IgG
<b>Conjugation</b>	Unconjugated
<b>Reactivity</b>	Bovine, Equine, Fish, Gallus, Hamster, Human, Mouse, Rat, Zebrafish
<b>Form/Appearance</b>	Liquid
<b>Concentration</b>	Lot dependent
<b>Buffer/Preservatives</b>	0.01M PBS, pH 7.4, 50% Glycerol, 0.05% Proclin 300.
<b>Purification</b>	Purified by antigen affinity column.
<b>Immunogen</b>	E. coli - derived recombinant Human HSPA8 (Asp534-Gly615).
<b>UniProt ID</b>	<b>P11142</b>
<b>Tested applications</b>	ELISA, IHC, WB

**Biorbyt Ltd.**

7 Signet Court, Swann Road  
Cambridge  
CB5 8LA  
United Kingdom

Email: [info@biorbyt.com](mailto:info@biorbyt.com), [support@biorbyt.com](mailto:support@biorbyt.com)

Phone: [+44 \(0\)1223 859353](tel:+44(0)1223859353) | Fax: [+1 \(415\) 651-8558](tel:+1(415)651-8558)

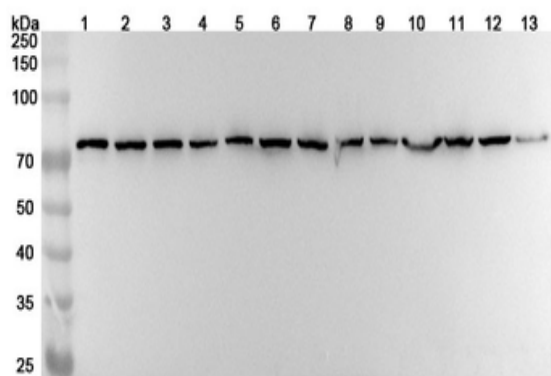
**Biorbyt LLC**

68 TW Alexander Drive  
Research Triangle Park  
Durham  
NC 27713  
United States

Email: [info@biorbyt.com](mailto:info@biorbyt.com), [support@biorbyt.com](mailto:support@biorbyt.com)

Phone: [+1 \(415\) 906-5211](tel:+1(415)906-5211) | Fax: [+1 \(415\) 651-8558](tel:+1(415)651-8558)

<b>Antibody Type</b>	Primary Antibody
<b>Storage</b>	Maintain refrigerated at 2-8°C for up to 2 weeks. For long term storage store at -20°C in small aliquots to prevent freeze-thaw cycles.
<b>Note</b>	For research use only
<b>Expiration Date</b>	12 months from date of receipt.



Western blot analysis was performed using anti-HSPA8 polyclonal antibody at 1 µg/mL on various samples. Lane 1: 4T1 cell lysate, Lane 2: MCF-7 cell lysate, Lane 3: PC-12 cell lysate, Lane 4: NIH3T3 cell lysate, Lane 5: HeLa cell lysate, Lane 6: U87 cell lysate, Lane 7: Jurkat cell lysate, Lane 8: HepG2 cell lysate, Lane 9: A549 cell lysate, Lane 10: Mouse brain lysate, Lane 11: Mouse heart lysate, Lane 12: Rat brain lysate, Lane 13: Rat heart lysate.

**Biorbyt Ltd.**

7 Signet Court, Swann Road  
Cambridge  
CB5 8LA  
United Kingdom

Email: [info@biorbyt.com](mailto:info@biorbyt.com), [support@biorbyt.com](mailto:support@biorbyt.com)  
Phone: [+44 \(0\)1223 859353](tel:+44(0)1223859353) | Fax: [+1 \(415\) 651-8558](tel:+1(415)651-8558)

**Biorbyt LLC**

68 TW Alexander Drive  
Research Triangle Park  
Durham  
NC 27713  
United States

Email: [info@biorbyt.com](mailto:info@biorbyt.com), [support@biorbyt.com](mailto:support@biorbyt.com)  
Phone: [+1 \(415\) 906-5211](tel:+1(415)906-5211) | Fax: [+1 \(415\) 651-8558](tel:+1(415)651-8558)