

Product Datasheet

RTCB Rabbit Polyclonal Antibody (orb2953183)

Catalog Number	orb2953183
Category	Antibodies
Description	Anti-RTCB Polyclonal Antibody is a rabbit polyclonal antibody detecting C22orf28 in ELISA, IHC, WB. Suitable for Human, Mouse, and Rat. Highlights Affinity Purified: Minimal background and high purity for reliable results. Multi-Application: Validated across multiple applications. Multi-Species: Cross-reactive for translational research.
Clonality	Polyclonal
Species/Host	Rabbit
Isotype	IgG
Conjugation	Unconjugated
Reactivity	Human, Mouse, Rat
Form/Appearance	Liquid
Concentration	Lot dependent
Buffer/Preservatives	0.01M PBS, pH 7.4, 50% Glycerol, 0.05% Proclin 300.
Purification	Purified by antigen affinity column.
Immunogen	E. coli - derived recombinant Human RTCB (Met1-Gly505).
UniProt ID	Q9Y310
Tested applications	ELISA, IHC, WB
Antibody Type	Primary Antibody

Biorbyt Ltd.

7 Signet Court, Swann Road
Cambridge
CB5 8LA
United Kingdom

Email: info@biorbyt.com, support@biorbyt.com

Phone: [+44 \(0\)1223 859353](tel:+44(0)1223859353) | Fax: [+1 \(415\) 651-8558](tel:+1(415)651-8558)

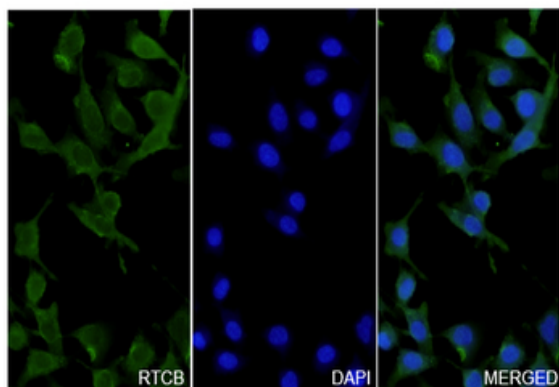
Biorbyt LLC

68 TW Alexander Drive
Research Triangle Park
Durham
NC 27713-2847
United States

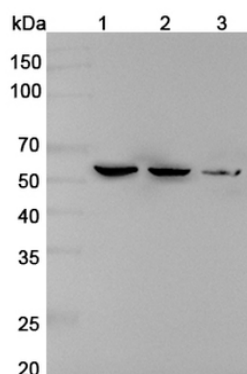
Email: info@biorbyt.com, support@biorbyt.com

Phone: [+1 \(415\) 906-5211](tel:+1(415)906-5211) | Fax: [+1 \(415\) 651-8558](tel:+1(415)651-8558)

Storage	Maintain refrigerated at 2-8°C for up to 2 weeks. For long term storage store at -20°C in small aliquots to prevent freeze-thaw cycles.
Note	For research use only
Expiration Date	12 months from date of receipt.



A549 cells were fixed with 4% paraformaldehyde for 20 minutes, followed by blocking with 5% goat serum for 1 hour. The cells were then incubated with a primary antibody targeting RTCB (orb2953183) at a concentration of 31.5 ug/ml overnight at 4°C. Afterward, the cells were incubated with a secondary antibody, Goat Anti-Rabbit IgG (Alexa Fluor-488) for 50 minutes at room temperature. The localization of RTCB was visualized (shown in green), and nuclear DNA was stained with DAPI (shown in blue).



Western blot analysis was performed using anti-RTCB polyclonal antibody at 1 µg/mL on various samples. Lane 1: 293T cell lysate, Lane 2: Jurkat cell lysate, Lane 3: Mouse liver lysate.

Biorbyt Ltd.

7 Signet Court, Swann Road
Cambridge
CB5 8LA
United Kingdom

Email: info@biorbyt.com, support@biorbyt.com
Phone: [+44 \(0\)1223 859353](tel:+44(0)1223859353) | Fax: [+1 \(415\) 651-8558](tel:+1(415)651-8558)

Biorbyt LLC

68 TW Alexander Drive
Research Triangle Park
Durham
NC 27713-2847
United States

Email: info@biorbyt.com, support@biorbyt.com
Phone: [+1 \(415\) 906-5211](tel:+1(415)906-5211) | Fax: [+1 \(415\) 651-8558](tel:+1(415)651-8558)