

Product Datasheet

Goat Rabbit IgG (H+L) Secondary Antibody (Cy3) (orb27705)

Catalog Number	orb27705
Category	Antibodies
Description	Goat Rabbit IgG (H+L) Secondary Antibody (Cy3)
Clonality	Polyclonal
Species/Host	Goat
Conjugation	Cy3
Reactivity	Rabbit
Concentration	1mg/ml
Tested applications	FC, IF
Specificity	This Cy3 conjugated antibody is specific for rabbit IgG and shows no cross-reactivity with mouse/bovine IgG.
Antibody Type	Secondary Antibody
Storage	At -20°C for one year from date of receipt. Avoid repeated freezing and thawing. Protect from light.
Note	For research use only
Expiration Date	12 months from date of receipt.

Biorbyt Ltd.

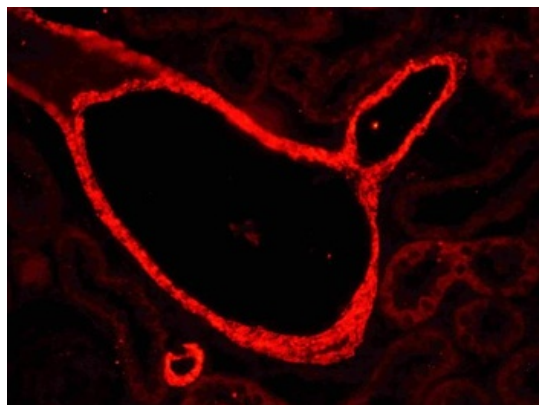
7 Signet Court, Swann Road
Cambridge
CB5 8LA
United Kingdom

Email: info@biorbyt.com, support@biorbyt.com
Phone: [+44 \(0\)1223 859353](tel:+44(0)1223859353) | Fax: [+1 \(415\) 651-8558](tel:+1(415)651-8558)

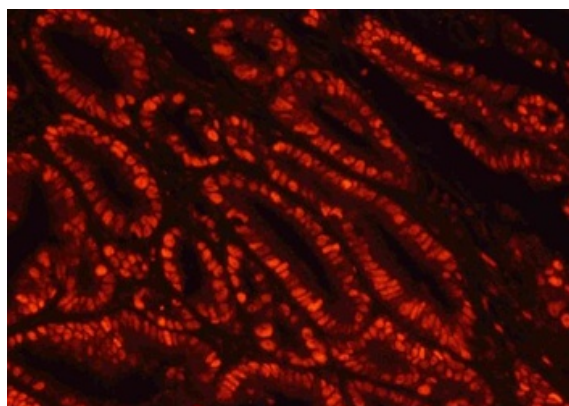
Biorbyt LLC

68 TW Alexander Drive
Research Triangle Park
Durham
NC 27713-2847
United States

Email: info@biorbyt.com, support@biorbyt.com
Phone: [+1 \(415\) 906-5211](tel:+1(415)906-5211) | Fax: [+1 \(415\) 651-8558](tel:+1(415)651-8558)



IF:Collagen IV was detected in rat kidney tissues using rabbit anti-Collagen IV Antigen Affinity purified polyclonal antibody. Cy3 Conjugated Goat Anti-Rabbit IgG (H+L) secondary antibody was used to detect the primary antibody.



IF:MCM2 was detected in human intestinal cancer tissues using rabbit anti-MCM2 Antigen Affinity purified polyclonal antibody. Cy3 Conjugated Goat Anti-Rabbit IgG (H+L) secondary antibody was used to detect the primary antibody.

Biorbyt Ltd.

7 Signet Court, Swann Road
Cambridge
CB5 8LA
United Kingdom

Email: info@biorbyt.com, support@biorbyt.com

Phone: [+44 \(0\)1223 859353](tel:+44(0)1223859353) | Fax: [+1 \(415\) 651-8558](tel:+1(415)651-8558)

Biorbyt LLC

68 TW Alexander Drive
Research Triangle Park
Durham
NC 27713-2847
United States

Email: info@biorbyt.com, support@biorbyt.com

Phone: [+1 \(415\) 906-5211](tel:+1(415)906-5211) | Fax: [+1 \(415\) 651-8558](tel:+1(415)651-8558)