

## Product Datasheet

### BinCARD Antibody (orb2650763)

|                            |   |
|----------------------------|---|
| <b>Catalog Number</b>      | orb2650763  |
| <b>Category</b>            | Antibodies  |
| <b>Description</b>         | Rabbit polyclonal antibody to BinCARD   |
| <b>Clonality</b>           | Polyclonal  |
| <b>Species/Host</b>        | Rabbit  |
| <b>Conjugation</b>         | Unconjugated  |
| <b>Reactivity</b>          | Human, Mouse, Rat   |
| <b>UniProt ID</b>          | <b>Q96LW7</b>   |
| <b>Tested applications</b> | WB  |
| <b>Dilution range</b>      | WB: WB (1/500 - 1/1000)   |
| <b>Clone Number</b>        | C9orf89   |
| <b>Storage</b>             | Maintain refrigerated at 2-8°C for up to 2 weeks. For long term storage store at -20°C in small aliquots to prevent freeze-thaw cycles. |
| <b>Note</b>                | For research use only   |
| <b>Expiration Date</b>     | 12 months from date of receipt.   |

**Biorbyt Ltd.**

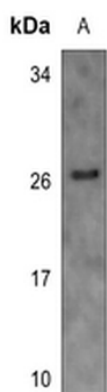
7 Signet Court, Swann Road  
Cambridge  
CB5 8LA  
United Kingdom

Email: [info@biorbyt.com](mailto:info@biorbyt.com), [support@biorbyt.com](mailto:support@biorbyt.com)  
Phone: [+44 \(0\)1223 859353](tel:+44(0)1223859353) | Fax: [+1 \(415\) 651-8558](tel:+1(415)651-8558)

**Biorbyt LLC**

68 TW Alexander Drive  
Research Triangle Park  
Durham  
NC 27713  
United States

Email: [info@biorbyt.com](mailto:info@biorbyt.com), [support@biorbyt.com](mailto:support@biorbyt.com)  
Phone: [+1 \(415\) 906-5211](tel:+1(415)906-5211) | Fax: [+1 \(415\) 651-8558](tel:+1(415)651-8558)



Western blot analysis of BinCARD expression in mouse testis (A) whole cell lysates.

**Biorbyt Ltd.**

7 Signet Court, Swann Road  
Cambridge  
CB5 8LA  
United Kingdom

Email: [info@biorbyt.com](mailto:info@biorbyt.com), [support@biorbyt.com](mailto:support@biorbyt.com)

Phone: [+44 \(0\)1223 859353](tel:+44(0)1223859353) | Fax: [+1 \(415\) 651-8558](tel:+1(415)651-8558)

**Biorbyt LLC**

68 TW Alexander Drive  
Research Triangle Park  
Durham  
NC 27713  
United States

Email: [info@biorbyt.com](mailto:info@biorbyt.com), [support@biorbyt.com](mailto:support@biorbyt.com)

Phone: [+1 \(415\) 906-5211](tel:+1(415)906-5211) | Fax: [+1 \(415\) 651-8558](tel:+1(415)651-8558)