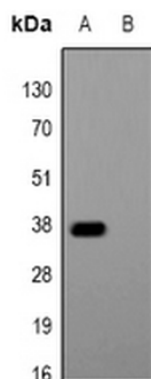


Product Datasheet

Glu-Glu-tag Antibody (orb2649451)

Catalog Number	orb2649451
Category	Antibodies
Description	Rabbit polyclonal antibody to Glu-Glu-tag
Clonality	Polyclonal
Species/Host	Rabbit
Conjugation	Unconjugated
Tested applications	IP, WB
Dilution range	WB: WB (1/500 - 1/1000), IP (1/10 - 1/100)
Storage	Maintain refrigerated at 2-8°C for up to 2 weeks. For long term storage store at -20°C in small aliquots to prevent freeze-thaw cycles.
Note	For research use only
Expiration Date	12 months from date of receipt.



Western blot analysis of Anti-Glu-Glu-tag Antibody against HEK293T cells transfected with vector overexpressing Glu-Glu tag (A) and untransfected (B).

Biorbyt Ltd.

7 Signet Court, Swann Road
Cambridge
CB5 8LA
United Kingdom

Email: info@biorbyt.com, support@biorbyt.com
Phone: [+44 \(0\)1223 859353](tel:+44(0)1223859353) | Fax: [+1 \(415\) 651-8558](tel:+1(415)651-8558)

Biorbyt LLC

68 TW Alexander Drive
Research Triangle Park
Durham
NC 27713
United States

Email: info@biorbyt.com, support@biorbyt.com
Phone: [+1 \(415\) 906-5211](tel:+1(415)906-5211) | Fax: [+1 \(415\) 651-8558](tel:+1(415)651-8558)