

## Product Datasheet

### Mouse IgG2b $\kappa$ Isotype Control (MPC-11), InVivoPure (orb2646451)

<b>Catalog Number</b>	orb2646451
<b>Category</b>	Antibodies
<b>Description</b>	<p>The mouse IgG2b <math>\kappa</math> isotype control (clone MPC-11) is a mouse monoclonal antibody ideal for use as a non-reactive, isotype-matched control for mouse IgG2b <math>\kappa</math> antibodies in most in vivo and in vitro applications. The MPC-11 cell line is a B lymphocyte of a mouse with plasmacytoma. This isotype control antibody is purified from cell culture supernatant of CCL 167TM MPC-11 cell line from the ATCC* with Protein-A or Protein-G affinity chromatography. The antibody is produced exclusively under serum-free conditions.</p>
<b>Clonality</b>	Monoclonal
<b>Species/Host</b>	Mouse
<b>Isotype</b>	IgG2b $\kappa$
<b>Conjugation</b>	Unconjugated
<b>Reactivity</b>	Mouse
<b>Form/Appearance</b>	Clear Liquid, PBS, pH 7.4, 0.2 $\mu$ m sterile filtered
<b>Concentration</b>	$\geq$ 0.5 mg/ mL
<b>Purity</b>	$\geq$ 90% (CGE, reducing conditions) $\leq$ 10 % aggregates (analytical SEC) Endotoxin level $\leq$ 2EU/mg
<b>Tested applications</b>	In vivo
<b>Clone Number</b>	MPC-11

**Biorbyt Ltd.**

7 Signet Court, Swann Road  
Cambridge  
CB5 8LA  
United Kingdom

Email: [info@biorbyt.com](mailto:info@biorbyt.com), [support@biorbyt.com](mailto:support@biorbyt.com)  
Phone: [+44 \(0\)1223 859353](tel:+44(0)1223859353) | Fax: [+1 \(415\) 651-8558](tel:+1(415)651-8558)

**Biorbyt LLC**

68 TW Alexander Drive  
Research Triangle Park  
Durham  
NC 27713  
United States

Email: [info@biorbyt.com](mailto:info@biorbyt.com), [support@biorbyt.com](mailto:support@biorbyt.com)  
Phone: [+1 \(415\) 906-5211](tel:+1(415)906-5211) | Fax: [+1 \(415\) 651-8558](tel:+1(415)651-8558)

**Storage**

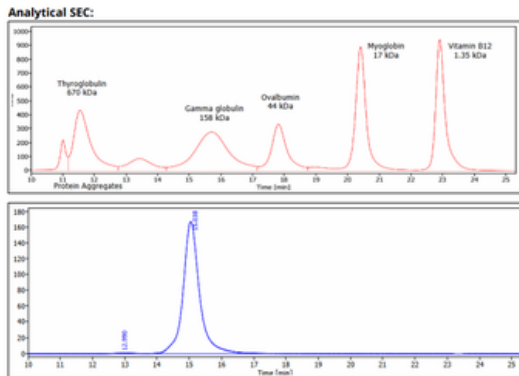
Maintain refrigerated at 2-8°C for up to 2 weeks. For long term storage store at -20°C in small aliquots to prevent freeze-thaw cycles.

**Note**

For research use only

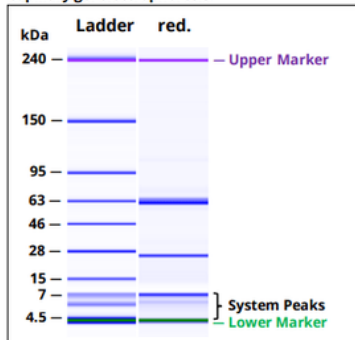
**Expiration Date**

12 months from date of receipt.



Analytical SEC of purified protein (blue) in comparison with gel filtration standard (red).

**Capillary gel electrophoresis:**



CGE of the purified protein under reducing (red.) conditions.

**Biorbyt Ltd.**

7 Signet Court, Swann Road  
Cambridge  
CB5 8LA  
United Kingdom

Email: [info@biorbyt.com](mailto:info@biorbyt.com), [support@biorbyt.com](mailto:support@biorbyt.com)  
Phone: +44 (0)1223 859353 | Fax: +1 (415) 651-8558

**Biorbyt LLC**

68 TW Alexander Drive  
Research Triangle Park  
Durham  
NC 27713  
United States

Email: [info@biorbyt.com](mailto:info@biorbyt.com), [support@biorbyt.com](mailto:support@biorbyt.com)  
Phone: +1 (415) 906-5211 | Fax: +1 (415) 651-8558