

Product Datasheet

Recombinant E-Cadherin Antibody / Rabbit Monoclonal (orb2640920)

Catalog Number	orb2640920
Category	Antibodies
Description	<p>Cadherins behave as both receptors and ligands for other molecules. During development, their behavior assists in properly positioning cells: they are responsible for the separation of the different tissue layers, and for cellular migration. In the very early stages of development, E-cadherin (epithelial cadherin) is most greatly expressed. The E-cadherin-catenin complex plays a key role in cellular adhesion; loss of this function has been associated with greater tumour metastasis. [Wiki]</p>
Clonality	Recombinant
Species/Host	Rabbit
Isotype	Rabbit IgG, kappa
Conjugation	Unconjugated
Reactivity	Human
Buffer/Preservatives	1 mg/ml in 1X PBS; rAlbumin free, sodium azide free
Purification	Protein A affinity chromatography
Immunogen	Recombinant human protein was used as the immunogen for the recombinant E-Cadherin antibody.
UniProt ID	P12830
Tested applications	FACS, IF, IHC-P, WB

Biorbyt Ltd.

7 Signet Court, Swann Road
Cambridge
CB5 8LA
United Kingdom

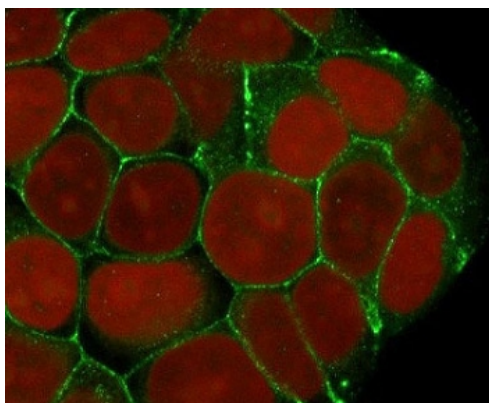
Email: info@biorbyt.com, support@biorbyt.com
Phone: [+44 \(0\)1223 859353](tel:+44(0)1223859353) | Fax: [+1 \(415\) 651-8558](tel:+1(415)651-8558)

Biorbyt LLC

68 TW Alexander Drive
Research Triangle Park
Durham
NC 27713
United States

Email: info@biorbyt.com, support@biorbyt.com
Phone: [+1 \(415\) 906-5211](tel:+1(415)906-5211) | Fax: [+1 \(415\) 651-8558](tel:+1(415)651-8558)

Dilution range	Western blot: 1-2ug/ml, Immunofluorescence: 1-2ug/ml, Flow cytometry: 1-2ug/10 ⁶ cells, Immunohistochemistry (FFPE): 1-2ug/ml for 30 min at RT, Prediluted IHC only format : incubate for 30 min at RT (1)
Application notes	The stated application concentrations are suggested starting points. Titration of the recombinant E-Cadherin antibody may be required due to differences in protocols and secondary/substrate sensitivity. 1. The prediluted format is supplied in a dropper bottle and is optimized for use in IHC. After epitope retrieval step (if required), drip mAb solution onto the tissue section and incubate at RT for 30 min.
Antibody Type	Primary Antibody
Clone Number	ECD1-3R
Storage	Maintain refrigerated at 2-8°C for up to 2 weeks. For long term storage store at -20°C in small aliquots to prevent freeze-thaw cycles.
Note	For research use only
Expiration Date	12 months from date of receipt.



Immunofluorescent staining of human MCF7 cells with recombinant E-Cadherin antibody (clone ECD1-3R, green) and Reddot nuclear stain (red).

Biorbyt Ltd.

7 Signet Court, Swann Road
Cambridge
CB5 8LA
United Kingdom

Email: info@biorbyt.com, support@biorbyt.com

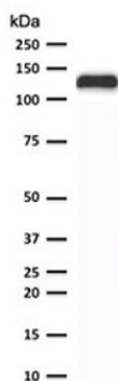
Phone: [+44 \(0\)1223 859353](tel:+44(0)1223859353) | Fax: [+1 \(415\) 651-8558](tel:+1(415)651-8558)

Biorbyt LLC

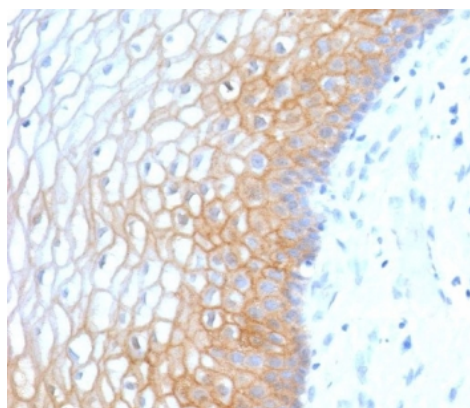
68 TW Alexander Drive
Research Triangle Park
Durham
NC 27713
United States

Email: info@biorbyt.com, support@biorbyt.com

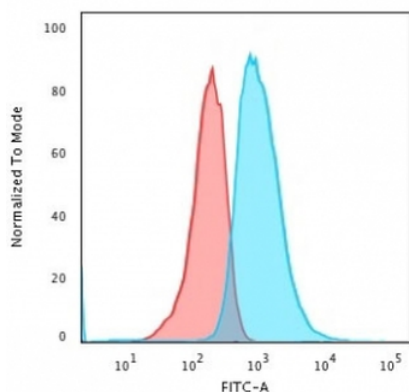
Phone: [+1 \(415\) 906-5211](tel:+1(415)906-5211) | Fax: [+1 \(415\) 651-8558](tel:+1(415)651-8558)



Western blot testing of human MCF-7 cell lysate with recombinant E-Cadherin antibody (clone ECD1-3R). Expected molecular weight: 135 kDa (precursor), 80-120 kDa (mature, depending on glycosylation level).



Formalin-fixed, paraffin-embedded human cervix stained with recombinant E-Cadherin antibody (clone ECD1-3R). Required HIER: boil tissue sections in 10mM citrate buffer, pH6, for 10-20 min followed by cooling at RT for 20 min.



Flow cytometry testing of human MCF7 cells with recombinant E-Cadherin antibody (clone ECD1-3R); Red = isotype control, Blue = recombinant E-Cadherin antibody.

Biorbyt Ltd.

7 Signet Court, Swann Road
Cambridge
CB5 8LA
United Kingdom

Email: info@biorbyt.com, support@biorbyt.com

Phone: +44 (0)1223 859353 | Fax: +1 (415) 651-8558

Biorbyt LLC

68 TW Alexander Drive
Research Triangle Park
Durham
NC 27713
United States

Email: info@biorbyt.com, support@biorbyt.com

Phone: +1 (415) 906-5211 | Fax: +1 (415) 651-8558