

Product Datasheet

DC-SIGN Antibody / CD209 (orb2640311)

Catalog Number	orb2640311
Category	Antibodies
Description	<p>DC-SIGN / CD209 is a transmembrane receptor that is expressed on the surface of dendritic cells and macrophages. It is involved in the innate immune system and recognizes numerous evolutionarily divergent pathogens ranging from parasites to viruses. The protein is organized into three distinct domains: an N-terminal transmembrane domain, a tandem-repeat neck domain and C-type lectin carbohydrate recognition domain. The extracellular region consisting of the C-type lectin and neck domains has a dual function as a pathogen recognition receptor and a cell adhesion receptor by binding carbohydrate ligands on the surface of microbes and endogenous cells. The neck region is important for homo-oligomerization, which allows the receptor to bind multivalent ligands with high avidity.</p>
Clonality	Monoclonal
Species/Host	Mouse
Isotype	Mouse IgG2b, kappa
Conjugation	Unconjugated
Reactivity	Human
Buffer/Preservatives	1 mg/ml in 1X PBS; rAlbumin free, sodium azide free
Purification	Protein G affinity chromatography
Immunogen	A human partial recombinant protein was used as the immunogen for the DC-SIGN antibody.
UniProt ID	Q9NNX6

Biorbyt Ltd.

7 Signet Court, Swann Road
Cambridge
CB5 8LA
United Kingdom

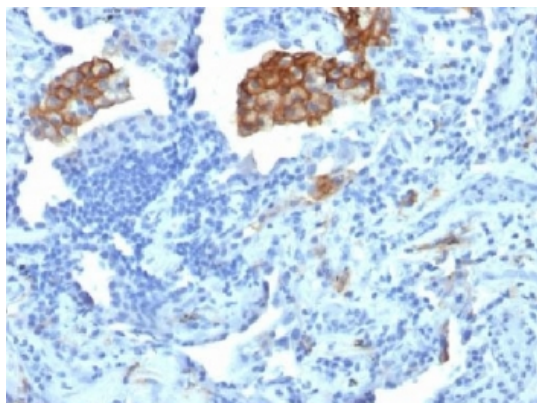
Email: info@biorbyt.com, support@biorbyt.com
Phone: [+44 \(0\)1223 859353](tel:+44(0)1223859353) | Fax: [+1 \(415\) 651-8558](tel:+1(415)651-8558)

Biorbyt LLC

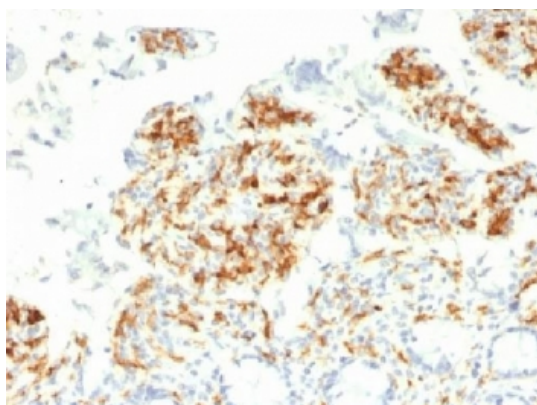
68 TW Alexander Drive
Research Triangle Park
Durham
NC 27713
United States

Email: info@biorbyt.com, support@biorbyt.com
Phone: [+1 \(415\) 906-5211](tel:+1(415)906-5211) | Fax: [+1 \(415\) 651-8558](tel:+1(415)651-8558)

Tested applications	IHC-P, WB
Dilution range	Western blot: 0.5-1ug/ml, Immunohistochemistry (FFPE): 0.5-1ug/ml for 30 min at RT
Application notes	Titering of the DC-SIGN antibody may be required for optimal performance.
Antibody Type	Primary Antibody
Clone Number	C209/1781
Storage	Maintain refrigerated at 2-8°C for up to 2 weeks. For long term storage store at -20°C in small aliquots to prevent freeze-thaw cycles.
Note	For research use only
Expiration Date	12 months from date of receipt.



IHC testing of FFPE human lung carcinoma with DC-SIGN antibody (clone C209/1781). Required HIER: boil tissue sections in 10mM Tris with 1mM EDTA, pH9, for 10-20.



IHC testing of FFPE human small intestine with DC-SIGN antibody (clone C209/1781). Required HIER: boil tissue sections in 10mM Tris with 1mM EDTA, pH9, for 10-20.

Biorbyt Ltd.

7 Signet Court, Swann Road
Cambridge
CB5 8LA
United Kingdom

Email: info@biorbyt.com, support@biorbyt.com

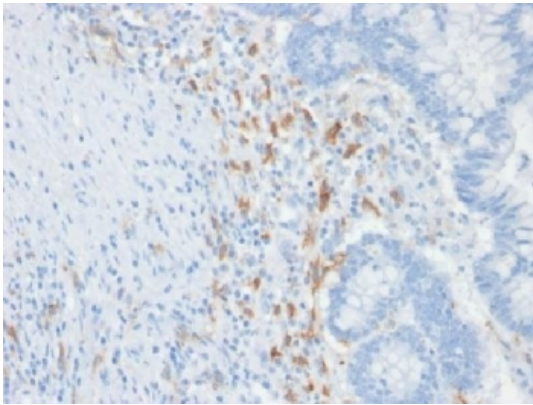
Phone: [+44 \(0\)1223 859353](tel:+44(0)1223859353) | Fax: [+1 \(415\) 651-8558](tel:+1(415)651-8558)

Biorbyt LLC

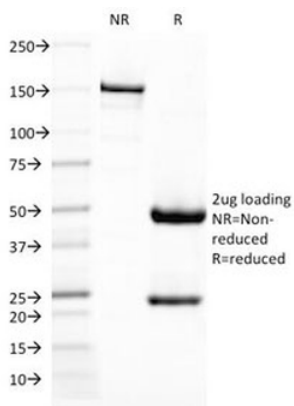
68 TW Alexander Drive
Research Triangle Park
Durham
NC 27713
United States

Email: info@biorbyt.com, support@biorbyt.com

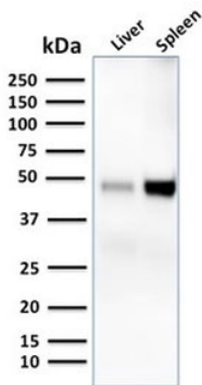
Phone: [+1 \(415\) 906-5211](tel:+1(415)906-5211) | Fax: [+1 \(415\) 651-8558](tel:+1(415)651-8558)



IHC testing of FFPE human colon carcinoma with DC-SIGN antibody (clone C209/1781). Required HIER: boil tissue sections in 10mM Tris with 1mM EDTA, pH9, for 10-20.



SDS-PAGE Analysis of Purified, BSA-Free DC-SIGN Antibody (clone C209/1781). Confirmation of Integrity and Purity of the Antibody.



Western blot testing of human liver and spleen lysate with DC-SIGN antibody. Predicted molecular weight ~46 kDa.

Biorbyt Ltd.

7 Signet Court, Swann Road
Cambridge
CB5 8LA
United Kingdom

Email: info@biorbyt.com, support@biorbyt.com

Phone: +44 (0)1223 859353 | Fax: +1 (415) 651-8558

Biorbyt LLC

68 TW Alexander Drive
Research Triangle Park
Durham
NC 27713
United States

Email: info@biorbyt.com, support@biorbyt.com

Phone: +1 (415) 906-5211 | Fax: +1 (415) 651-8558