

Product Datasheet

gp100 Antibody (orb2637929)

Catalog Number	orb2637929
Category	Antibodies
Description	<p>Melanocytes produce organelles called melanosomes which produce melanin, the pigment that gives color to skin, hair, eyes, scales and feathers. gp100 was identified in an attempt to clone the gene Tyrosinase, an enzyme required for melanin synthesis. Further testing determined that gp100 is a melanoma-specific protein and is responsible for melanosome maturation, facilitating the transition from amorphous rounded vesicles to fibrillary ellipsoid organelles. Metastatic amelanotic melanoma can often be confused with a variety of poorly differentiated carcinomas, large cell lymphomas, and sarcomas using H & E stains alone. It is also difficult to differentiate melanoma from spindle cell carcinomas and various types of mesenchymal neoplasms. Clone HMB45 gp100 antibody stains fetal and neonatal melanocytes, junctional and blue nevus cells, and malignant melanoma. It also stains angiomyolipomas, tumors most commonly associated with the kidney. Intradermal nevi, normal adult melanocytes, and non-melanocytic cells are negative. This gp100 antibody does not stain tumor cells of epithelial, lymphoid, glial, or mesenchymal origin. The gp100 molecule is a 100kDa glycosylated protein that is cleaved into a small (26kDa) carboxy-terminal fragment and a larger amino-terminal section (60-64 kDa), which is subsequently cleaved to generate 26kDa and 34-38kDa fragments.</p>
Clonality	Monoclonal
Species/Host	Mouse
Isotype	Mouse IgG1, kappa
Conjugation	Unconjugated
Reactivity	Human
Buffer/Preservatives	1 mg/ml in 1X PBS; rAlbumin free, sodium azide free

Biorbyt Ltd.

7 Signet Court, Swann Road
Cambridge
CB5 8LA
United Kingdom

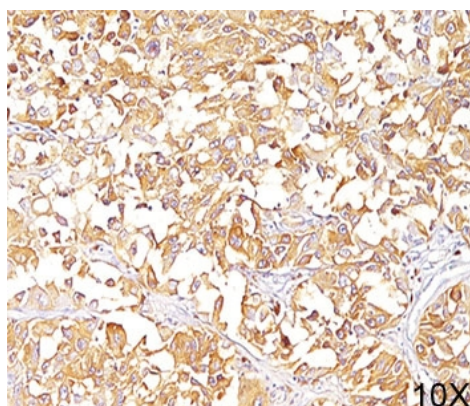
Email: info@biorbyt.com, support@biorbyt.com
Phone: [+44 \(0\)1223 859353](tel:+44(0)1223859353) | Fax: [+1 \(415\) 651-8558](tel:+1(415)651-8558)

Biorbyt LLC

68 TW Alexander Drive
Research Triangle Park
Durham
NC 27713
United States

Email: info@biorbyt.com, support@biorbyt.com
Phone: [+1 \(415\) 906-5211](tel:+1(415)906-5211) | Fax: [+1 \(415\) 651-8558](tel:+1(415)651-8558)

Purification	Protein G affinity chromatography
Immunogen	The extract of pigmented melanoma metastases from lymph nodes was used as the immunogen for this gp100 antibody.
Tested applications	FACS, IF, IHC-P, WB
Dilution range	Western blot: 1-2ug/ml, Flow cytometry: 0.5-1ug/10 ⁶ cells, Immunofluorescence: 0.5-1ug/ml, Immunohistochemistry (FFPE): 0.5-1ug/ml for 30 min at RT (1)
Application notes	The concentration stated for each application is a general starting point. Variations in protocols, secondaries and substrates may require the gp100 antibody to be titered up or down for optimal performance.1. The prediluted format is supplied in a dropper bottle and is optimized for use in IHC. After epitope retrieval step (if required), drip mAb solution onto the tissue section and incubate at RT for 30 min.
Antibody Type	Primary Antibody
Clone Number	HMB45
Storage	Maintain refrigerated at 2-8°C for up to 2 weeks. For long term storage store at -20°C in small aliquots to prevent freeze-thaw cycles.
Note	For research use only
Expiration Date	12 months from date of receipt.



IHC staining of human melanoma (10X) with gp100 antibody (clone HMB45). HI ER: boil tissue sections in pH9 10mM Tris with 1mM EDTA for 20 min and allow to cool before testing.

Biorbyt Ltd.

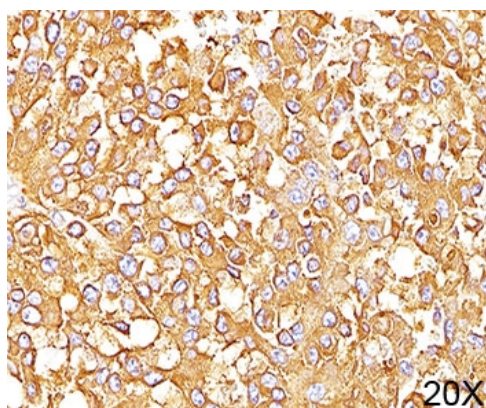
7 Signet Court, Swann Road
Cambridge
CB5 8LA
United Kingdom

Email: info@biorbyt.com, support@biorbyt.com
Phone: [+44 \(0\)1223 859353](tel:+44(0)1223859353) | Fax: [+1 \(415\) 651-8558](tel:+1(415)651-8558)

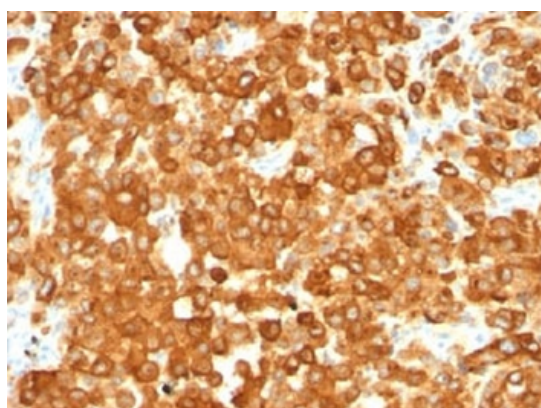
Biorbyt LLC

68 TW Alexander Drive
Research Triangle Park
Durham
NC 27713
United States

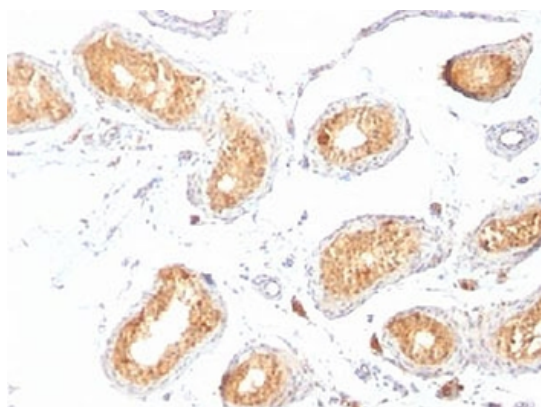
Email: info@biorbyt.com, support@biorbyt.com
Phone: [+1 \(415\) 906-5211](tel:+1(415)906-5211) | Fax: [+1 \(415\) 651-8558](tel:+1(415)651-8558)



IHC staining of human melanoma (20X) with gp100 antibody (clone HMB45). HIER: boil tissue sections in pH9 10mM Tris with 1mM EDTA for 20 min and allow to cool before testing.



IHC staining of human melanoma with gp100 antibody (clone HMB45). HIER: boil tissue sections in pH9 10mM Tris with 1mM EDTA for 20 min and allow to cool before testing.



IHC staining of testis with gp100 antibody (clone HMB45). HIER: boil tissue sections in pH9 10mM Tris with 1mM EDTA for 20 min and allow to cool before testing.

Biorbyt Ltd.

7 Signet Court, Swann Road
Cambridge
CB5 8LA
United Kingdom

Email: info@biorbyt.com, support@biorbyt.com

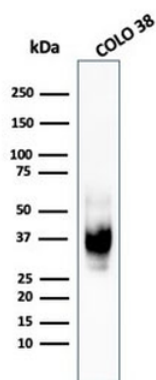
Phone: [+44 \(0\)1223 859353](tel:+44(0)1223859353) | Fax: [+1 \(415\) 651-8558](tel:+1(415)651-8558)

Biorbyt LLC

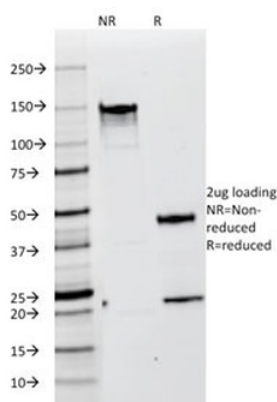
68 TW Alexander Drive
Research Triangle Park
Durham
NC 27713
United States

Email: info@biorbyt.com, support@biorbyt.com

Phone: [+1 \(415\) 906-5211](tel:+1(415)906-5211) | Fax: [+1 \(415\) 651-8558](tel:+1(415)651-8558)



Western blot testing of human COLO-38 cell lysate with recombinant gp100 antibody (clone PMEL/1825R).



SDS-PAGE analysis of purified, BSA-free gp100 antibody (clone HMB45) as confirmation of integrity and purity.

Biorbyt Ltd.

7 Signet Court, Swann Road
Cambridge
CB5 8LA
United Kingdom

Email: info@biorbyt.com, support@biorbyt.com

Phone: [+44 \(0\)1223 859353](tel:+44(0)1223859353) | Fax: [+1 \(415\) 651-8558](tel:+1(415)651-8558)

Biorbyt LLC

68 TW Alexander Drive
Research Triangle Park
Durham
NC 27713
United States

Email: info@biorbyt.com, support@biorbyt.com

Phone: [+1 \(415\) 906-5211](tel:+1(415)906-5211) | Fax: [+1 \(415\) 651-8558](tel:+1(415)651-8558)