

## Product Datasheet

# Mouse IgG1 Antibody / Isotype Control for Mouse (orb2636476)

|                             |  |
|-----------------------------|--|
| <b>Catalog Number</b>       | orb2636476   |
| <b>Category</b>             | Antibodies   |
| <b>Description</b>          | To serve as a true negative control for various procedures, this mouse monoclonal IgG should be used under the identical conditions and at the same dilution as the rabbit monoclonal antibody being used for a positive reaction. |
| <b>Clonality</b>            | Monoclonal   |
| <b>Species/Host</b>         | Mouse  |
| <b>Isotype</b>              | Mouse IgG1, kappa  |
| <b>Conjugation</b>          | Unconjugated   |
| <b>Reactivity</b>           | Human  |
| <b>Buffer/Preservatives</b> | 1 mg/ml in 1X PBS; rAlbumin free, sodium azide free  |
| <b>Purification</b>         | Protein A/G affinity   |
| <b>Immunogen</b>            | Recombinant full-length human IG1R protein was used as the immunogen for the mouse IgG1 antibody.  |
| <b>Tested applications</b>  | FACS, IF, IHC-P, WB  |
| <b>Dilution range</b>       | Flow cytometry: application dependent ,Immunofluorescence: application dependent,Immunohistochemistry (FFPE): application dependent,Western blot: application dependent  |
| <b>Application notes</b>    | Optimal dilution of the mouse IgG1 antibody should be determined by the researcher.  |

**Biorbyt Ltd.**

7 Signet Court, Swann Road  
Cambridge  
CB5 8LA  
United Kingdom

Email: [info@biorbyt.com](mailto:info@biorbyt.com), [support@biorbyt.com](mailto:support@biorbyt.com)

Phone: [+44 \(0\)1223 859353](tel:+44(0)1223859353) | Fax: [+1 \(415\) 651-8558](tel:+1(415)651-8558)

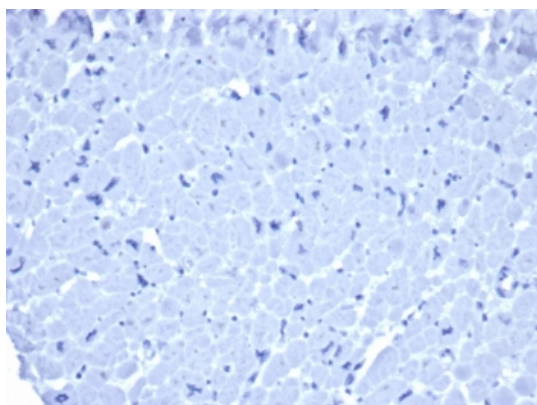
**Biorbyt LLC**

68 TW Alexander Drive  
Research Triangle Park  
Durham  
NC 27713-2847  
United States

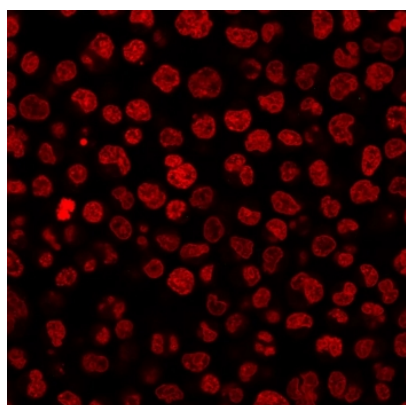
Email: [info@biorbyt.com](mailto:info@biorbyt.com), [support@biorbyt.com](mailto:support@biorbyt.com)

Phone: [+1 \(415\) 906-5211](tel:+1(415)906-5211) | Fax: [+1 \(415\) 651-8558](tel:+1(415)651-8558)

|                        |   |
|------------------------|---|
| <b>Antibody Type</b>   | Primary Antibody  |
| <b>Clone Number</b>    | ICG1/1331   |
| <b>Storage</b>         | Maintain refrigerated at 2-8°C for up to 2 weeks. For long term storage store at -20°C in small aliquots to prevent freeze-thaw cycles. |
| <b>Note</b>            | For research use only   |
| <b>Expiration Date</b> | 12 months from date of receipt.   |



IHC staining of FFPE human heart tissue with mouse IgG1 antibody (clone ICG1/1331). HIER: boil tissue sections in pH9 10 mM Tris with 1 mM EDTA for 20 min and allow to cool before testing. No staining was observed.



Immunofluorescent staining of PFA-fixed human Raji cells with mouse IgG1 antibody (clone ICG1/1331, green) and Reddot nuclear stain (red). No IgG1 staining was observed.

**Biorbyt Ltd.**

7 Signet Court, Swann Road  
Cambridge  
CB5 8LA  
United Kingdom

Email: [info@biorbyt.com](mailto:info@biorbyt.com), [support@biorbyt.com](mailto:support@biorbyt.com)

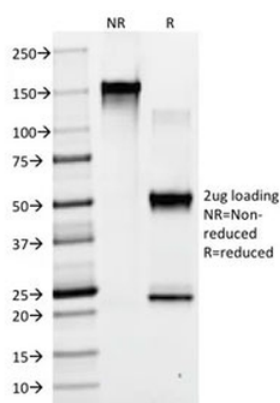
Phone: [+44 \(0\)1223 859353](tel:+44(0)1223859353) | Fax: [+1 \(415\) 651-8558](tel:+1(415)651-8558)

**Biorbyt LLC**

68 TW Alexander Drive  
Research Triangle Park  
Durham  
NC 27713-2847  
United States

Email: [info@biorbyt.com](mailto:info@biorbyt.com), [support@biorbyt.com](mailto:support@biorbyt.com)

Phone: [+1 \(415\) 906-5211](tel:+1(415)906-5211) | Fax: [+1 \(415\) 651-8558](tel:+1(415)651-8558)



SDS-PAGE analysis of purified, BSA-free mouse IgG1 antibody (clone ICG1/ 1331) as confirmation of integrity and purity.

**Biorbyt Ltd.**

7 Signet Court, Swann Road  
Cambridge  
CB5 8LA  
United Kingdom

Email: [info@biorbyt.com](mailto:info@biorbyt.com), [support@biorbyt.com](mailto:support@biorbyt.com)

Phone: [+44 \(0\)1223 859353](tel:+44(0)1223859353) | Fax: [+1 \(415\) 651-8558](tel:+1(415)651-8558)

**Biorbyt LLC**

68 TW Alexander Drive  
Research Triangle Park  
Durham  
NC 27713-2847  
United States

Email: [info@biorbyt.com](mailto:info@biorbyt.com), [support@biorbyt.com](mailto:support@biorbyt.com)

Phone: [+1 \(415\) 906-5211](tel:+1(415)906-5211) | Fax: [+1 \(415\) 651-8558](tel:+1(415)651-8558)