

Product Datasheet

Human PD-L1 Protein, mFc Tag (orb257991)

Catalog Number	orb257991
Category	Proteins
Description	Human PD-L1 Protein, Mouse IgG1 Fc Tag is expressed from human 293 cells (HEK293). It contains AA Phe 19 - Arg 238 (Accession # NP_054862.1).
Target	PD-L1
Conjugation	Unconjugated
Tag	C-mFc(mIgG1)
Reactivity	Human
Form/Appearance	Powder
Buffer/Preservatives	PBS, pH 7.4
Purity	95%
UniProt ID	NP_054862.1
MW	51.4 kDa
Application notes	This protein carries a mouse IgG1 Fc tag at the C-terminus. The protein has a calculated MW of 51.4 kDa. The protein migrates as 60-70 kDa when calibrated against Star Ribbon Pre-stained Protein Marker under reducing (R) condition (SDS-PAGE) due to glycosylation.
Expression System	HEK293
Endotoxins	0.1 EU per µg
Expression Region	Phe 19 - Arg 238

Biorbyt Ltd.

7 Signet Court, Swann Road
Cambridge
CB5 8LA
United Kingdom

Email: info@biorbyt.com, support@biorbyt.com
Phone: [+44 \(0\)1223 859353](tel:+44(0)1223859353) | Fax: [+1 \(415\) 651-8558](tel:+1(415)651-8558)

Biorbyt LLC

68 TW Alexander Drive
Research Triangle Park
Durham
NC 27713
United States

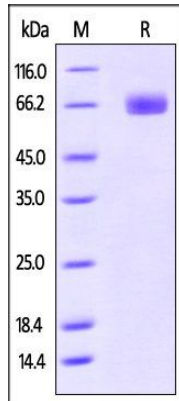
Email: info@biorbyt.com, support@biorbyt.com
Phone: [+1 \(415\) 906-5211](tel:+1(415)906-5211) | Fax: [+1 \(415\) 651-8558](tel:+1(415)651-8558)

Storage

-20°C to -70°C for 24 months in lyophilized state;. -70°C for 12 months under sterile conditions after reconstitution. For long term storage, the product should be stored at lyophilized state at -20°C or lower

Note

For research use only



SDS-PAGE analysis of Human PD-L1 protein

Biorbyt Ltd.

7 Signet Court, Swann Road
Cambridge
CB5 8LA
United Kingdom

Email: info@biorbyt.com, support@biorbyt.com

Phone: [+44 \(0\)1223 859353](tel:+44(0)1223859353) | Fax: [+1 \(415\) 651-8558](tel:+1(415)651-8558)

Biorbyt LLC

68 TW Alexander Drive
Research Triangle Park
Durham
NC 27713
United States

Email: info@biorbyt.com, support@biorbyt.com

Phone: [+1 \(415\) 906-5211](tel:+1(415)906-5211) | Fax: [+1 \(415\) 651-8558](tel:+1(415)651-8558)