

## Product Datasheet

### Human VEGF165 Protein (orb257923)

<b>Catalog Number</b>	orb257923
<b>Category</b>	Proteins
<b>Description</b>	Human VEGF165, premium grade is expressed from human 293 cells (HEK293). It contains AA Ala 27 - Arg 191 (Accession # P15692-4).
<b>Target</b>	VEGF165
<b>Conjugation</b>	Unconjugated
<b>Tag</b>	Native
<b>Reactivity</b>	Human
<b>Form/Appearance</b>	Powder
<b>Buffer/Preservatives</b>	PBS, pH 7.4
<b>Purity</b>	95%
<b>UniProt ID</b>	<b>P15692</b>
<b>MW</b>	19.2 kDa
<b>Application notes</b>	This protein carries no "tag". The protein has a calculated MW of 19.2 kDa. The protein migrates as 24 kDa $\pm$ 3 kDa when calibrated against Star Ribbon Pre-stained Protein Marker under reducing (R) condition (SDS-PAGE) due to glycosylation.
<b>Expression System</b>	HEK293
<b>Endotoxins</b>	0.01 EU per $\mu$ g
<b>Expression Region</b>	Ala 27 - Arg 191

**Biorbyt Ltd.**

7 Signet Court, Swann Road  
Cambridge  
CB5 8LA  
United Kingdom

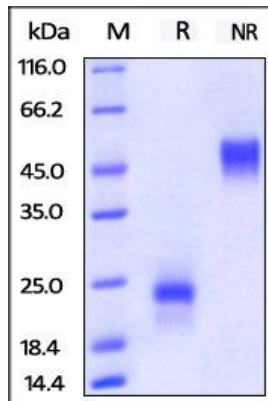
Email: [info@biorbyt.com](mailto:info@biorbyt.com), [support@biorbyt.com](mailto:support@biorbyt.com)  
Phone: [+44 \(0\)1223 859353](tel:+44(0)1223859353) | Fax: [+1 \(415\) 651-8558](tel:+1(415)651-8558)

**Biorbyt LLC**

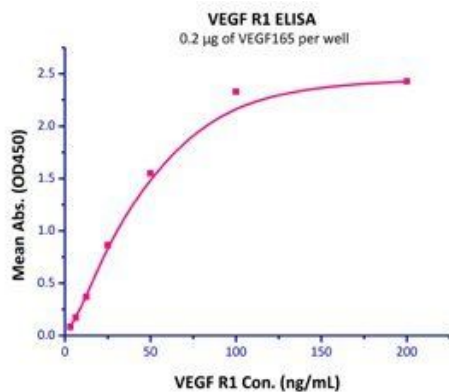
68 TW Alexander Drive  
Research Triangle Park  
Durham  
NC 27713-2847  
United States

Email: [info@biorbyt.com](mailto:info@biorbyt.com), [support@biorbyt.com](mailto:support@biorbyt.com)  
Phone: [+1 \(415\) 906-5211](tel:+1(415)906-5211) | Fax: [+1 \(415\) 651-8558](tel:+1(415)651-8558)

<b>Storage</b>	-20°C
<b>Note</b>	For research use only
<b>NCBI</b>	<b>P15692</b>
<b>Expiration Date</b>	6 months from date of receipt.



SDS-PAGE analysis of Human VEGF protein



Line graph illustrates about the sensitivity range of Human VEGF protein using different concentrations

**Biorbyt Ltd.**

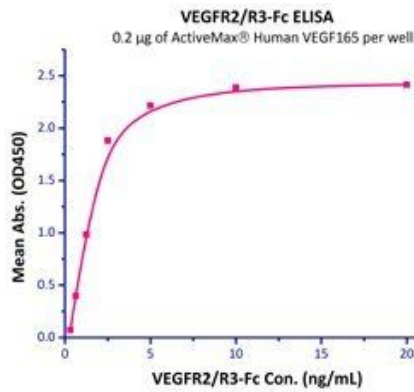
7 Signet Court, Swann Road  
Cambridge  
CB5 8LA  
United Kingdom

Email: [info@biorbyt.com](mailto:info@biorbyt.com), [support@biorbyt.com](mailto:support@biorbyt.com)  
Phone: +44 (0)1223 859353 | Fax: +1 (415) 651-8558

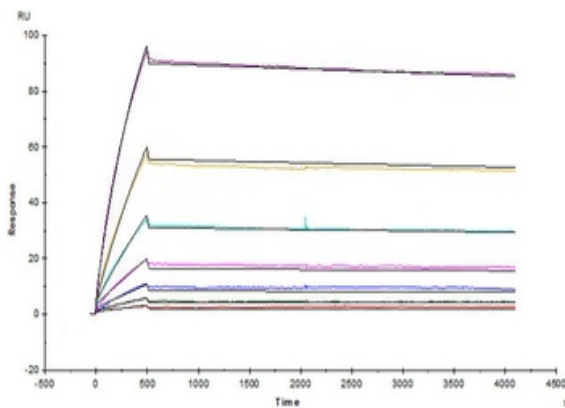
**Biorbyt LLC**

68 TW Alexander Drive  
Research Triangle Park  
Durham  
NC 27713-2847  
United States

Email: [info@biorbyt.com](mailto:info@biorbyt.com), [support@biorbyt.com](mailto:support@biorbyt.com)  
Phone: +1 (415) 906-5211 | Fax: +1 (415) 651-8558



Line graph illustrates about the sensitivity range of Human VEGF protein using different concentrations



Avastin (Bevacizumab) captured on CM5 chip via anti-human IgG Fc antibodies surface, can bind Human VEGF165, premium grade (Cat. No. orb257923) with an affinity constant of 0.776 nM as determined in a SPR assay (Biacore T200) (Routinely tested).

## Biorbyt Ltd.

7 Signet Court, Swann Road  
Cambridge  
CB5 8LA  
United Kingdom

Email: [info@biorbyt.com](mailto:info@biorbyt.com), [support@biorbyt.com](mailto:support@biorbyt.com)  
Phone: +44 (0)1223 859353 | Fax: +1 (415) 651-8558

## Biorbyt LLC

68 TW Alexander Drive  
Research Triangle Park  
Durham  
NC 27713-2847  
United States

Email: [info@biorbyt.com](mailto:info@biorbyt.com), [support@biorbyt.com](mailto:support@biorbyt.com)  
Phone: +1 (415) 906-5211 | Fax: +1 (415) 651-8558