

Product Datasheet

Human IL-1 beta Protein (orb257615)

Catalog Number	orb257615
Category	Proteins
Description	Human IL-1 beta, premium grade is expressed from E. coli cells. It contains AA Ala 117 - Ser 269 (Accession # P01584-1).
Target	IL-1 beta
Conjugation	Unconjugated
Tag	Native
Reactivity	Human
Form/Appearance	Powder
Buffer/Preservatives	PBS, pH 7.4
Purity	95%
UniProt ID	P01584
MW	17.5 kDa
Application notes	This protein carries no "tag". The protein has a calculated MW of 17.5 kDa. The protein migrates as 18 kDa \pm 3 kDa when calibrated against Star Ribbon Pre-stained Protein Marker under reducing (R) condition (SDS-PAGE).
Expression System	E. coli
Endotoxins	0.01 EU per μ g
Expression Region	Ala 117 - Ser 269

Biorbyt Ltd.

7 Signet Court, Swann Road
Cambridge
CB5 8LA
United Kingdom

Email: info@biorbyt.com, support@biorbyt.com
Phone: [+44 \(0\)1223 859353](tel:+44(0)1223859353) | Fax: [+1 \(415\) 651-8558](tel:+1(415)651-8558)

Biorbyt LLC

68 TW Alexander Drive
Research Triangle Park
Durham
NC 27713
United States

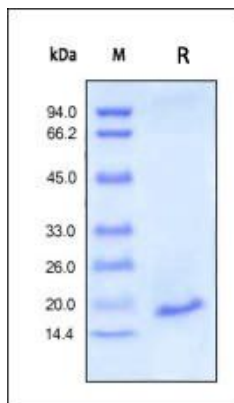
Email: info@biorbyt.com, support@biorbyt.com
Phone: [+1 \(415\) 906-5211](tel:+1(415)906-5211) | Fax: [+1 \(415\) 651-8558](tel:+1(415)651-8558)

Storage

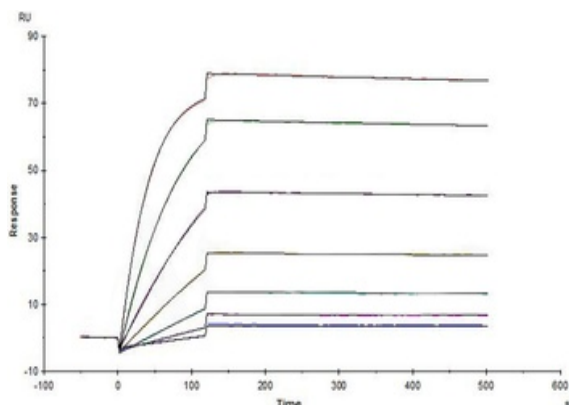
-20°C to -70°C for 12 months in lyophilized state;. -70°C for 3 months under sterile conditions after reconstitution. For long term storage, the product should be stored at lyophilized state at -20°C or lower

Note

For research use only



SDS-PAGE analysis of Human IL-1 beta protein



Human IL-1 RII, Fc Tag (Cat. No. orb257592) captured on CM5 chip via anti-human IgG Fc antibodies surface can bind Human IL-1 beta, premium grade (Cat. No. orb257615) with an affinity constant of 0.622 nM as determined in a SPR assay (Biacore T200) (Routinely tested).

Biorbyt Ltd.

7 Signet Court, Swann Road
Cambridge
CB5 8LA
United Kingdom

Email: info@biorbyt.com, support@biorbyt.com
Phone: +44 (0)1223 859353 | Fax: +1 (415) 651-8558

Biorbyt LLC

68 TW Alexander Drive
Research Triangle Park
Durham
NC 27713
United States

Email: info@biorbyt.com, support@biorbyt.com
Phone: +1 (415) 906-5211 | Fax: +1 (415) 651-8558