

Product Datasheet

Human GM-CSF Protein (orb257510)

Catalog Number	orb257510
Category	Proteins
Description	Human GM-CSF, premium grade is expressed from human 293 cells (HEK293). It contains AA Ala 18 - Glu 144 (Accession # NP_000749.2).
Target	GM-CSF
Conjugation	Unconjugated
Tag	Native
Reactivity	Human
Form/Appearance	Powder
Buffer/Preservatives	PBS, pH 7.4
Purity	95%
UniProt ID	NP_000749.2
MW	14.5 kDa
Application notes	This protein carries no "tag". The protein has a calculated MW of 14.5 kDa. The protein migrates as 25 kDa \pm 3 kDa when calibrated against Star Ribbon Pre-stained Protein Marker under reducing (R) condition (SDS-PAGE) due to glycosylation.
Expression System	HEK293
Endotoxins	0.01 EU per μ g
Expression Region	Ala 18 - Glu 144

Biorbyt Ltd.

7 Signet Court, Swann Road
Cambridge
CB5 8LA
United Kingdom

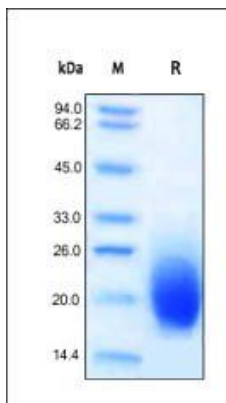
Email: info@biorbyt.com, support@biorbyt.com
Phone: [+44 \(0\)1223 859353](tel:+44(0)1223859353) | Fax: [+1 \(415\) 651-8558](tel:+1(415)651-8558)

Biorbyt LLC

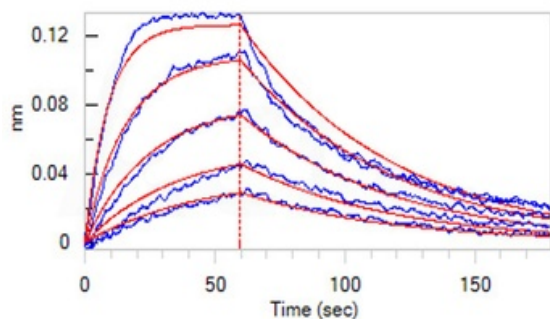
68 TW Alexander Drive
Research Triangle Park
Durham
NC 27713
United States

Email: info@biorbyt.com, support@biorbyt.com
Phone: [+1 \(415\) 906-5211](tel:+1(415)906-5211) | Fax: [+1 \(415\) 651-8558](tel:+1(415)651-8558)

Storage	-20°C
Note	For research use only
NCBI	NP_000749.2
Expiration Date	6 months from date of receipt.



SDS-PAGE analysis of Human GM-CSF protein



Loaded Human GM-CSF R alpha, Fc Tag (Cat. No. orb545735) on Protein A Biosensor, can bind Human GM-CSF, premium grade (Cat. No. orb257510) with an affinity constant of 9.21 nM as determined in BLI assay (ForteBio Octet Red96e) (Routinely tested).

Biorbyt Ltd.

7 Signet Court, Swann Road
Cambridge
CB5 8LA
United Kingdom

Email: info@biorbyt.com, support@biorbyt.com
Phone: +44 (0)1223 859353 | Fax: +1 (415) 651-8558

Biorbyt LLC

68 TW Alexander Drive
Research Triangle Park
Durham
NC 27713
United States

Email: info@biorbyt.com, support@biorbyt.com
Phone: +1 (415) 906-5211 | Fax: +1 (415) 651-8558