

## Product Datasheet

# Human CASP1 (Caspase-1) Quick ELISA Kit (orb2568471)

<b>Catalog Number</b>	orb2568471
<b>Category</b>	Assays and Kits
<b>Description</b>	Human CASP1 (Caspase-1) Quick ELISA Kit
<b>Target</b>	CASP1
<b>Reactivity</b>	Human
<b>UniProt ID</b>	<b>P29466</b>
<b>Assay Type</b>	Sandwich
<b>Assay Time</b>	120 minutes
<b>Range</b>	78.125-5000pg/ml
<b>Sensitivity</b>	46.875pg/ml
<b>Sample Types</b>	Serum, plasma, cell culture supernatant, cell lysate or tissue lysate, other biological fluid samples
<b>Storage</b>	2 - 8 °C for 12 months
<b>Note</b>	For research use only
<b>Expiration Date</b>	6 months from date of receipt.

### Biorbyt Ltd.

7 Signet Court, Swann Road  
Cambridge  
CB5 8LA  
United Kingdom

Email: [info@biorbyt.com](mailto:info@biorbyt.com), [support@biorbyt.com](mailto:support@biorbyt.com)

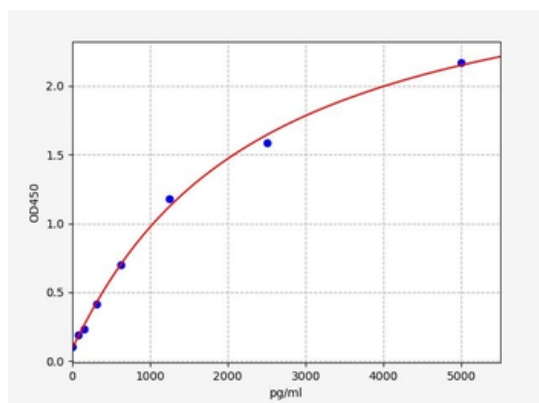
Phone: [+44 \(0\)1223 859353](tel:+44(0)1223859353) | Fax: [+1 \(415\) 651-8558](tel:+1(415)651-8558)

### Biorbyt LLC

68 TW Alexander Drive  
Research Triangle Park  
Durham  
NC 27713  
United States

Email: [info@biorbyt.com](mailto:info@biorbyt.com), [support@biorbyt.com](mailto:support@biorbyt.com)

Phone: [+1 \(415\) 906-5211](tel:+1(415)906-5211) | Fax: [+1 \(415\) 651-8558](tel:+1(415)651-8558)



## Biorbyt Ltd.

7 Signet Court, Swann Road  
Cambridge  
CB5 8LA  
United Kingdom

Email: [info@biorbyt.com](mailto:info@biorbyt.com), [support@biorbyt.com](mailto:support@biorbyt.com)

Phone: [+44 \(0\)1223 859353](tel:+44(0)1223859353) | Fax: [+1 \(415\) 651-8558](tel:+1(415)6518558)

## Biorbyt LLC

68 TW Alexander Drive  
Research Triangle Park  
Durham  
NC 27713  
United States

Email: [info@biorbyt.com](mailto:info@biorbyt.com), [support@biorbyt.com](mailto:support@biorbyt.com)

Phone: [+1 \(415\) 906-5211](tel:+1(415)9065211) | Fax: [+1 \(415\) 651-8558](tel:+1(415)6518558)