

Product Datasheet

Human HSPG2 (Basement membrane-specific heparan sulfate proteoglycan core protein) Quick ELISA Kit (orb2568437)

Catalog Number	orb2568437
Category	Assays and Kits
Description	Human HSPG2 (Basement membrane-specific heparan sulfate proteoglycan core protein) Quick ELISA Kit
Target	HSPG2
Reactivity	Human
UniProt ID	P98160
Assay Type	Sandwich
Assay Time	120 minutes
Range	0.625-40ng/ml
Sensitivity	0.375ng/ml
Sample Types	Serum, plasma, cell culture supernatant, cell lysate or tissue lysate, other biological fluid samples
Storage	2 - 8 °C for 12 months
Note	For research use only
Expiration Date	6 months from date of receipt.

Biorbyt Ltd.

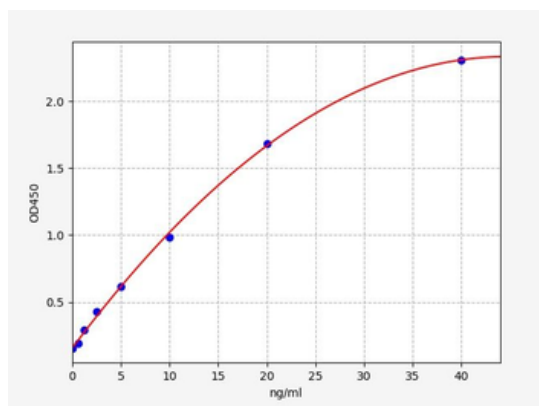
7 Signet Court, Swann Road
Cambridge
CB5 8LA
United Kingdom

Email: info@biorbyt.com, support@biorbyt.com
Phone: [+44 \(0\)1223 859353](tel:+44(0)1223859353) | Fax: [+1 \(415\) 651-8558](tel:+1(415)651-8558)

Biorbyt LLC

68 TW Alexander Drive
Research Triangle Park
Durham
NC 27713
United States

Email: info@biorbyt.com, support@biorbyt.com
Phone: [+1 \(415\) 906-5211](tel:+1(415)906-5211) | Fax: [+1 \(415\) 651-8558](tel:+1(415)651-8558)



Biorbyt Ltd.

7 Signet Court, Swann Road
Cambridge
CB5 8LA
United Kingdom

Email: info@biorbyt.com, support@biorbyt.com

Phone: [+44 \(0\)1223 859353](tel:+44(0)1223859353) | Fax: [+1 \(415\) 651-8558](tel:+1(415)6518558)

Biorbyt LLC

68 TW Alexander Drive
Research Triangle Park
Durham
NC 27713
United States

Email: info@biorbyt.com, support@biorbyt.com

Phone: [+1 \(415\) 906-5211](tel:+1(415)9065211) | Fax: [+1 \(415\) 651-8558](tel:+1(415)6518558)