

Product Datasheet

Human sTREM-1 (soluble Triggering Receptor Expressed on Myeloid Cells-1) Quick ELISA Kit (orb2568031)

| | |
|------------------------|---|
| Catalog Number | orb2568031 |
| Category | Assays and Kits |
| Description | Human sTREM-1 (soluble Triggering Receptor Expressed on Myeloid Cells-1) Quick ELISA Kit |
| Target | sTREM-1 |
| Reactivity | Human |
| UniProt ID | Q9NP99 |
| Assay Type | Sandwich |
| Assay Time | 120 minutes |
| Range | 31.25-2000pg/ml |
| Sensitivity | 18.75pg/ml |
| Sample Types | Serum, plasma, cell culture supernatant, cell lysate or tissue lysate, other biological fluid samples |
| Storage | 2 - 8 °C for 12 months |
| Note | For research use only |
| Expiration Date | 6 months from date of receipt. |

Biorbyt Ltd.

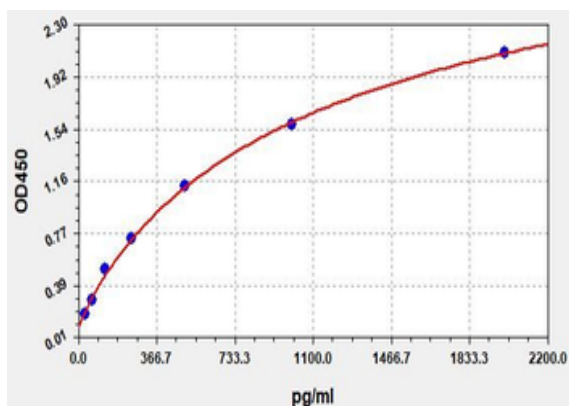
7 Signet Court, Swann Road
Cambridge
CB5 8LA
United Kingdom

Email: info@biorbyt.com, support@biorbyt.com
Phone: [+44 \(0\)1223 859353](tel:+44(0)1223859353) | Fax: [+1 \(415\) 651-8558](tel:+1(415)651-8558)

Biorbyt LLC

68 TW Alexander Drive
Research Triangle Park
Durham
NC 27713-2847
United States

Email: info@biorbyt.com, support@biorbyt.com
Phone: [+1 \(415\) 906-5211](tel:+1(415)906-5211) | Fax: [+1 \(415\) 651-8558](tel:+1(415)651-8558)



Standard curve for orb2568031 ELISA kit.

Biorbyt Ltd.

7 Signet Court, Swann Road
Cambridge
CB5 8LA
United Kingdom

Email: info@biorbyt.com, support@biorbyt.com

Phone: [+44 \(0\)1223 859353](tel:+44(0)1223859353) | Fax: [+1 \(415\) 651-8558](tel:+1(415)651-8558)

Biorbyt LLC

68 TW Alexander Drive
Research Triangle Park
Durham
NC 27713-2847
United States

Email: info@biorbyt.com, support@biorbyt.com

Phone: [+1 \(415\) 906-5211](tel:+1(415)906-5211) | Fax: [+1 \(415\) 651-8558](tel:+1(415)651-8558)