

Product Datasheet

PGC1 alpha/beta Recombinant Rabbit Monoclonal Antibody (orb2562721)

Catalog Number	orb2562721
Category	Antibodies
Description	PGC1 alpha/beta Recombinant Rabbit Monoclonal Antibody
Target	PPARGC1A
Clonality	Recombinant
Species/Host	Rabbit
Isotype	IgG
Conjugation	Unconjugated
Reactivity	Mouse, Rat
Predicted Reactivity	Human
Form/Appearance	Liquid
Buffer/Preservatives	10mM phosphate buffered saline(pH 7.4) with 150mM sodium chloride, 0.05% rAlbumin, 0.02% Proclin300 and 50% glycerol.
Purification	Affinity purified by Protein A
Immunogen	A synthesized peptide derived from human PGC1 alpha (765-798aa)
UniProt ID	Q9UBK2
MW	113 kDa

Biorbyt Ltd.

7 Signet Court, Swann Road
Cambridge
CB5 8LA
United Kingdom

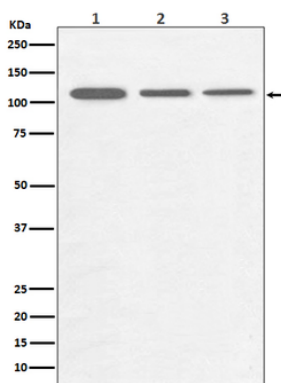
Email: info@biorbyt.com, support@biorbyt.com
Phone: [+44 \(0\)1223 859353](tel:+44(0)1223859353) | Fax: [+1 \(415\) 651-8558](tel:+1(415)651-8558)

Biorbyt LLC

68 TW Alexander Drive
Research Triangle Park
Durham
NC 27713
United States

Email: info@biorbyt.com, support@biorbyt.com
Phone: [+1 \(415\) 906-5211](tel:+1(415)906-5211) | Fax: [+1 \(415\) 651-8558](tel:+1(415)651-8558)

Tested applications	WB
Dilution range	WB=1:500-2000
Antibody Type	Primary Antibody
Clone Number	17C3
Storage	Maintain refrigerated at 2-8°C for up to 2 weeks. For long term storage store at -20°C in small aliquots to prevent freeze-thaw cycles.
Note	For research use only
Expiration Date	12 months from date of receipt.



Western blot analysis of (1) HeLa cell lysate, (2) NIH 3T3 cell lysate, (3) C6 cell lysate. Using PGC1 alpha/beta (orb2562721) monoclonal antibody at 1:1000 dilution and 4°C overnight incubation. Followed by conjugated secondary antibody incubation at r.t. for 60 min.

Biorbyt Ltd.

7 Signet Court, Swann Road
Cambridge
CB5 8LA
United Kingdom

Email: info@biorbyt.com, support@biorbyt.com

Phone: [+44 \(0\)1223 859353](tel:+44(0)1223859353) | Fax: [+1 \(415\) 651-8558](tel:+1(415)651-8558)

Biorbyt LLC

68 TW Alexander Drive
Research Triangle Park
Durham
NC 27713
United States

Email: info@biorbyt.com, support@biorbyt.com

Phone: [+1 \(415\) 906-5211](tel:+1(415)906-5211) | Fax: [+1 \(415\) 651-8558](tel:+1(415)651-8558)