

## Product Datasheet

# PU.1/Spi1 Recombinant Rabbit Monoclonal Antibody (orb2562355)

|                             |   |
|-----------------------------|---|
| <b>Catalog Number</b>       | orb2562355  |
| <b>Category</b>             | Antibodies  |
| <b>Description</b>          | PU.1/Spi1 Recombinant Rabbit Monoclonal Antibody  |
| <b>Target</b>               | SPI1  |
| <b>Clonality</b>            | Recombinant   |
| <b>Species/Host</b>         | Rabbit  |
| <b>Isotype</b>              | IgG   |
| <b>Conjugation</b>          | Unconjugated  |
| <b>Reactivity</b>           | Human, Mouse  |
| <b>Predicted Reactivity</b> | Human   |
| <b>Form/Appearance</b>      | Liquid  |
| <b>Buffer/Preservatives</b> | 10mM phosphate buffered saline(pH 7.4) with 150mM sodium chloride, 0.05% rAlbumin, 0.02% Proclin300 and 50% glycerol. |
| <b>Purification</b>         | Affinity purified by Protein A  |
| <b>Immunogen</b>            | A synthesized peptide derived from human SPI1 (1-50/270aa)  |
| <b>UniProt ID</b>           | <b>P17947</b>   |
| <b>MW</b>                   | 42 kDa  |

**Biorbyt Ltd.**

7 Signet Court, Swann Road  
Cambridge  
CB5 8LA  
United Kingdom

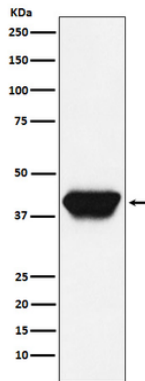
Email: [info@biorbyt.com](mailto:info@biorbyt.com), [support@biorbyt.com](mailto:support@biorbyt.com)  
Phone: [+44 \(0\)1223 859353](tel:+44(0)1223859353) | Fax: [+1 \(415\) 651-8558](tel:+1(415)651-8558)

**Biorbyt LLC**

68 TW Alexander Drive  
Research Triangle Park  
Durham  
NC 27713  
United States

Email: [info@biorbyt.com](mailto:info@biorbyt.com), [support@biorbyt.com](mailto:support@biorbyt.com)  
Phone: [+1 \(415\) 906-5211](tel:+1(415)906-5211) | Fax: [+1 \(415\) 651-8558](tel:+1(415)651-8558)

|                            |   |
|----------------------------|---|
| <b>Tested applications</b> | WB  |
| <b>Dilution range</b>      | WB=1:500-2000   |
| <b>Antibody Type</b>       | Primary Antibody  |
| <b>Clone Number</b>        | 7D6   |
| <b>Storage</b>             | Maintain refrigerated at 2-8°C for up to 2 weeks. For long term storage store at -20°C in small aliquots to prevent freeze-thaw cycles. |
| <b>Note</b>                | For research use only   |
| <b>Expiration Date</b>     | 12 months from date of receipt.   |



Western blot analysis of Daudi cell lysate. Using PU.1/Spi1 (orb2562355) monoclonal antibody at 1:1000 dilution and 4°C overnight incubation. Followed by conjugated secondary antibody incubation at r.t. for 60 min.

**Biorbyt Ltd.**

7 Signet Court, Swann Road  
Cambridge  
CB5 8LA  
United Kingdom

Email: [info@biorbyt.com](mailto:info@biorbyt.com), [support@biorbyt.com](mailto:support@biorbyt.com)

Phone: [+44 \(0\)1223 859353](tel:+44(0)1223859353) | Fax: [+1 \(415\) 651-8558](tel:+1(415)651-8558)

**Biorbyt LLC**

68 TW Alexander Drive  
Research Triangle Park  
Durham  
NC 27713  
United States

Email: [info@biorbyt.com](mailto:info@biorbyt.com), [support@biorbyt.com](mailto:support@biorbyt.com)

Phone: [+1 \(415\) 906-5211](tel:+1(415)906-5211) | Fax: [+1 \(415\) 651-8558](tel:+1(415)651-8558)