

## Product Datasheet

### CD25 Antibody (orb248904)

<b>Catalog Number</b>	orb248904
<b>Category</b>	Antibodies
<b>Description</b>	The CD25 Antibody is suitable for FC, IF. It is a Monoclonal, Unconjugated antibody which raised against Native purified human CD25. Purification: The antibody was purified by affinity chromatography.
<b>Clonality</b>	Monoclonal
<b>Species/Host</b>	Mouse
<b>Conjugation</b>	Unconjugated
<b>Reactivity</b>	Human
<b>Form/Appearance</b>	Mouse IgG2a. Liquid in PBS, pH 7.3, and 0.02% sodium azide.
<b>Purification</b>	The antibody was purified by affinity chromatography.
<b>Immunogen</b>	Native purified human CD25.
<b>UniProt ID</b>	<b>P01589</b>
<b>Tested applications</b>	FC, IF, WB
<b>Dilution range</b>	WB (1/500 - 1/1000), IF/IC (1/50 - 1/200), FC (1/500 - 1/2000)

**Biorbyt Ltd.**

7 Signet Court, Swann Road  
Cambridge  
CB5 8LA  
United Kingdom

Email: [info@biorbyt.com](mailto:info@biorbyt.com), [support@biorbyt.com](mailto:support@biorbyt.com)  
Phone: [+44 \(0\)1223 859353](tel:+44(0)1223859353) | Fax: [+1 \(415\) 651-8558](tel:+1(415)651-8558)

**Biorbyt LLC**

68 TW Alexander Drive  
Research Triangle Park  
Durham  
NC 27713  
United States

Email: [info@biorbyt.com](mailto:info@biorbyt.com), [support@biorbyt.com](mailto:support@biorbyt.com)  
Phone: [+1 \(415\) 906-5211](tel:+1(415)906-5211) | Fax: [+1 \(415\) 651-8558](tel:+1(415)651-8558)

**Application notes**

1. Take 100 µl peripheral blood anticoagulated by EDTA and add to the bottom of 5 ml tube. 2. Add appropriate amount of antibody to the bottom of flow tube mixing with the whole blood; incubate for 30 minutes at room temperature. 3. Add 2 ml RBC lysis buffer; incubate for 10 minutes after mixing; dissolve red blood cells. 4. Sample tube is set to 1000 rpm centrifugation for 5 minutes; discard the supernatant. 5. Add 2 ml PBS wash buffer to resuspend the cells; then 1000 rpm centrifugation for 5 minutes; discard the supernatant. 6. Add appropriate amount of fluorescent-labeled anti-mouse IgGs and incubate for 20 minutes away from light at room temperature. 7. Add 2 ml PBS wash buffer to resuspend the cells; then 1000 rpm centrifugation for 5 minutes; discard the supernatant. 8. Add 0.5 ml PBS wash buffer to resuspend the cells and detect by flow cytometry (sample should be determined on the day on the machine and can also be added fixation overnight at 4 °C then measured).

**Specificity**

Recognizes human CD25

**Antibody Type**

Primary Antibody

**Clone Number**

JM7B6

**Storage**

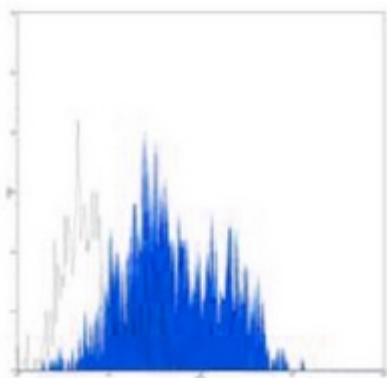
Maintain refrigerated at 2-8°C for up to 2 weeks. For long term storage store at -20°C in small aliquots to prevent freeze-thaw cycles.

**Note**

For research use only

**Entrez****3559****Expiration Date**

12 months from date of receipt.



Flow cytometric analysis of human lymphocytes treated with PHA using Anti-CD25 Antibody, followed by anti-mouse IgG PE.

**Biorbyt Ltd.**

7 Signet Court, Swann Road  
Cambridge  
CB5 8LA  
United Kingdom

Email: [info@biorbyt.com](mailto:info@biorbyt.com), [support@biorbyt.com](mailto:support@biorbyt.com)Phone: [+44 \(0\)1223 859353](tel:+44(0)1223859353) | Fax: [+1 \(415\) 651-8558](tel:+1(415)651-8558)**Biorbyt LLC**

68 TW Alexander Drive  
Research Triangle Park  
Durham  
NC 27713  
United States

Email: [info@biorbyt.com](mailto:info@biorbyt.com), [support@biorbyt.com](mailto:support@biorbyt.com)Phone: [+1 \(415\) 906-5211](tel:+1(415)906-5211) | Fax: [+1 \(415\) 651-8558](tel:+1(415)651-8558)