

Product Datasheet

ER Antibody / Estrogen Receptor alpha (orb248339)

Catalog Number	orb248339
Category	Antibodies
Description	Estrogen receptor (ER) is an important regulator of growth and differentiation in the mammary gland. ER presence in breast tumors indicates an increased likelihood of response to anti-estrogen (e.g. tamoxifen) therapy. Clone ER506 antibody strongly stains nuclei of epithelial cells in breast carcinomas.
Clonality	Monoclonal
Species/Host	Mouse
Isotype	Mouse IgG1, kappa
Conjugation	Unconjugated
Reactivity	Human
Buffer/Preservatives	0.2 mg/ml in 1X PBS with 0.1 mg/ml rAlbumin and 0.05% sodium azide
Purification	Protein G affinity chromatography
Immunogen	Recombinant human ER alpha protein (aa 2-185) was used as the immunogen.
Tested applications	FACS, IF, IHC-P, WB
Dilution range	Flow cytometry: 1-2ug/10 ⁶ cells,Western blot: 2-4ug/ml,Immunohistochemistry (FFPE): 1-2ug/ml (1),Immunofluorescence: 1-3ug/ml

Biorbyt Ltd.

7 Signet Court, Swann Road
Cambridge
CB5 8LA
United Kingdom

Email: info@biorbyt.com, support@biorbyt.com

Phone: [+44 \(0\)1223 859353](tel:+44(0)1223859353) | Fax: [+1 \(415\) 651-8558](tel:+1(415)651-8558)

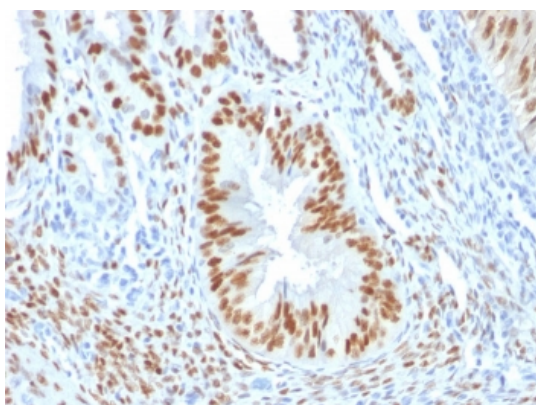
Biorbyt LLC

68 TW Alexander Drive
Research Triangle Park
Durham
NC 27713
United States

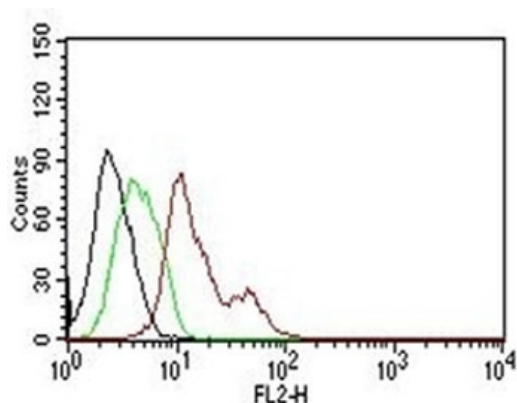
Email: info@biorbyt.com, support@biorbyt.com

Phone: [+1 \(415\) 906-5211](tel:+1(415)906-5211) | Fax: [+1 \(415\) 651-8558](tel:+1(415)651-8558)

Application notes	Variations in protocols, secondaries and substrates may require the ER antibody to be titrated for optimal performance.1. FFPE testing requires boiling tissue sections in pH 9 10mM Tris with 1mM EDTA for 10-20 min and cooling at RT for 20 minutes.
Antibody Type	Primary Antibody
Clone Number	ER506
Storage	Maintain refrigerated at 2-8°C for up to 2 weeks. For long term storage store at -20°C in small aliquots to prevent freeze-thaw cycles.
Note	For research use only
Expiration Date	12 months from date of receipt.



IHC testing of FFPE human endometrium with ER antibody (clone ER506).



Intracellular FACS testing of human MCF-7 cells: Black = cells alone; Green = isotype control; Red = PE conjugated ER antibody (V2113PE)

Biorbyt Ltd.

7 Signet Court, Swann Road
Cambridge
CB5 8LA
United Kingdom

Email: info@biorbyt.com, support@biorbyt.com

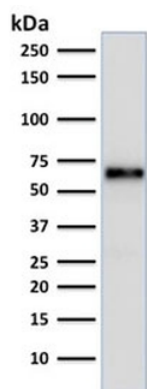
Phone: +44 (0)1223 859353 | Fax: +1 (415) 651-8558

Biorbyt LLC

68 TW Alexander Drive
Research Triangle Park
Durham
NC 27713
United States

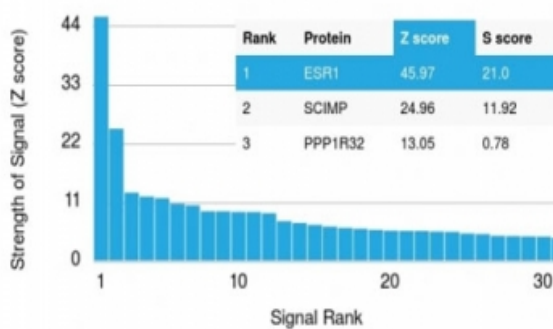
Email: info@biorbyt.com, support@biorbyt.com

Phone: +1 (415) 906-5211 | Fax: +1 (415) 651-8558

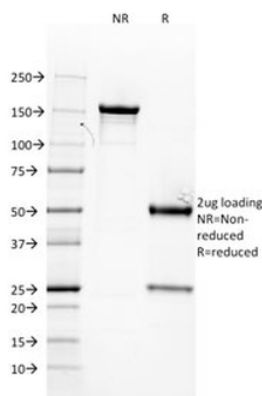


Western blot testing of MCF-7 cell lysate with ER antibody (clone ER506). Predicted molecular weight of ER alpha: ~67 kDa.

Human Protein Microarray Specificity Validation



Analysis of HuProt (TM) microarray containing more than 19,000 full-length human proteins using ER antibody (clone ER506). These results demonstrate the foremost specificity of the ER506 mAb. Z- and S- score: The Z-score represents the strength of a signal that an antibody (in combination with a fluorescently-tagged anti-IgG secondary Ab) produces when binding to a particular protein on the HuProt (TM) array. Z-scores are described in units of standard deviations (SD's) above the mean value of all signals generated on that array. If the targets on the HuProt (TM) are arranged in descending order of the Z-score, the S-score is the difference (also in units of SD's) between the Z-scores. The S-score therefore represents the relative target specificity of an Ab to its intended target.



SDS-PAGE analysis of purified, BSA-free ER antibody (clone ER506) as confirmation of integrity and purity.

Biorbyt Ltd.

7 Signet Court, Swann Road
Cambridge
CB5 8LA
United Kingdom

Email: info@biorbyt.com, support@biorbyt.com
Phone: +44 (0)1223 859353 | Fax: +1 (415) 651-8558

Biorbyt LLC

68 TW Alexander Drive
Research Triangle Park
Durham
NC 27713
United States

Email: info@biorbyt.com, support@biorbyt.com
Phone: +1 (415) 906-5211 | Fax: +1 (415) 651-8558