

Product Datasheet

HER2 Antibody / ErbB2 (orb248333)

Catalog Number	orb248333
Description	This antibody recognizes a protein of 185kDa, which is identified as HER2 / ErbB2. Its epitope is localized in the extracellular domain. HER2 is a member of the EGFR family. This antibody is specific and shows minimal cross-reaction with other members of the EGFR-family. Receptors of this family are located on the plasma membrane and consist of an extracellular ligand-binding domain that is connected to a large intracellular domain by a single transmembrane sequence. HER2 / ErbB2 protein is over-expressed in a variety of carcinomas especially those of breast and ovary.
Species/Host	Mouse
Reactivity	Human
Conjugation	Unconjugated
Tested Applications	ELISA, FACS, IF
Immunogen	Recombinant human HER2 protein was used as the immunogen for this antibody.(1)
Storage	Maintain refrigerated at 2-8°C for up to 2 weeks. For long term storage store at -20°C in small aliquots to prevent freeze-thaw cycles.
Note	For research use only
Application notes	The concentration stated for each application is a general starting point. Variations in protocols, secondaries and substrates may require the antibody to be titrated up or down for optimal performance.1. This HER2 antibody binds to the extracellular/cell surface region of the protein.
Formula	0.2 mg/ml in 1X PBS with 0.1 mg/ml BSA (US sourced) and 0.05% sodium azide
Isotype	Mouse IgG1, kappa
Clonality	Monoclonal

Biorbyt Ltd.

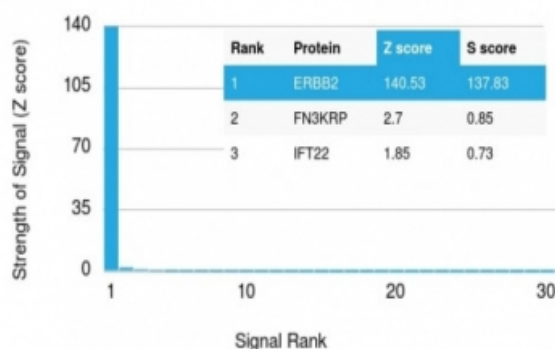
7 Signet Court, Swann's Road,
Cambridge, CB5 8LA, United Kingdom
Email: info@biorbyt.com, support@biorbyt.com
Phone: [+44 \(0\) 1223 859-353](tel:+44201223859353) | Fax: [+1 \(415\) 651-8558](tel:+14156518558)

Biorbyt LLC.

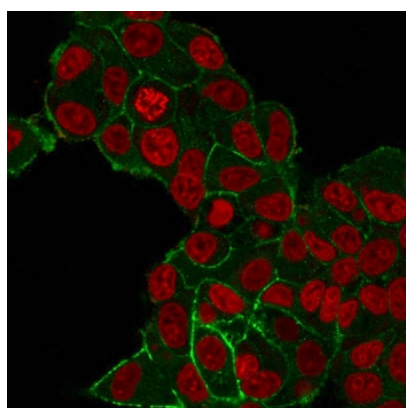
68 TW Alexander Drive,
Durham, NC, 27713, United States
Email: info@biorbyt.com, support@biorbyt.com
Phone: [+1 \(415\) 906-5211](tel:+14159065211) | Fax: [+1 \(415\) 651-8558](tel:+14156518558)

Clone Number	HRB2/282
Antibody Type	Primary Antibody
Hazard Information	This HER2 / ErbB2 antibody is available for research use only.
Dilution Range	ELISA (order BSA/sodium azide-free format for coating),Flow cytometry: 0.5-1ug/million cells,Immunofluorescence: 0.5-1ug/ml
Expiration Date	12 months from date of receipt.

Human Protein Microarray Specificity Validation



Analysis of HuProt (TM) microarray containing more than 19,000 full-length human proteins using HER2 ErbB2 antibody (clone HRB2/282). These results demonstrate the foremost specificity of the HRB2/282 mAb. Z- and S- score: The Z-score represents the strength of a signal that an antibody (in combination with a fluorescently-tagged anti-IgG secondary Ab) produces when binding to a particular protein on the HuProt (TM) array. Z-scores are described in units of standard deviations (SD's) above the mean value of all signals generated on that array. If the targets on the HuProt (TM) are arranged in descending order of the Z-score, the S-score is the difference (also in units of SD's) between the Z-scores. The S-score therefore represents the relative target specificity of an Ab to its intended target.



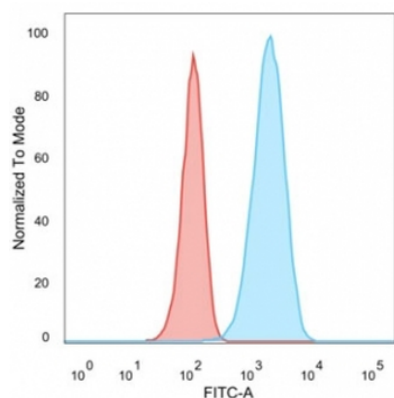
Immunofluorescent staining of PFA-fixed human MCF7 cells with HER2 ErbB2 antibody (clone HRB2/282, green) and Reddot nuclear stain (red).

Biorbyt Ltd.

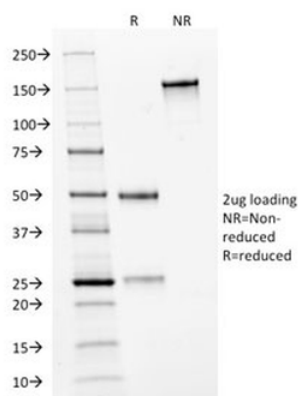
7 Signet Court, Swann's Road,
Cambridge, CB5 8LA, United Kingdom
Email: info@biorbyt.com, support@biorbyt.com
Phone: [+44 \(0\) 1223 859-353](tel:+4401223859353) | Fax: [+1 \(415\) 651-8558](tel:+14156518558)

Biorbyt LLC.

68 TW Alexander Drive,
Durham, NC, 27713, United States
Email: info@biorbyt.com, support@biorbyt.com
Phone: [+1 \(415\) 906-5211](tel:+14159065211) | Fax: [+1 \(415\) 651-8558](tel:+14156518558)



Flow cytometry testing of PFA-fixed human MCF7 cells with HER2 ErbB2 antibody (clone HRB2/282); Red = isotype control, Blue = HER2 ErbB2 antibody.



SDS-PAGE analysis of purified, BSA-free HER2 ErbB2 antibody (clone HRB2/282) as confirmation of integrity and purity.

Biorbyt Ltd.

7 Signet Court, Swann's Road,
Cambridge, CB5 8LA, United Kingdom
Email: info@biorbyt.com, support@biorbyt.com
Phone: [+44 \(0\) 1223 859-353](tel:+44(0)1223859353) | Fax: [+1 \(415\) 651-8558](tel:+1(415)6518558)

Biorbyt LLC.

68 TW Alexander Drive,
Durham, NC, 27713, United States
Email: info@biorbyt.com, support@biorbyt.com
Phone: [+1 \(415\) 906-5211](tel:+1(415)9065211) | Fax: [+1 \(415\) 651-8558](tel:+1(415)6518558)