

Product Datasheet

ErbB2 Antibody / HER2 (orb248331)

Catalog Number	orb248331
Category	Antibodies
Description	<p>This antibody recognizes a protein of 185kDa, which is identified as HER2 / ErbB2. Its epitope is localized in the extracellular domain. ErbB2 is a member of the EGFR family. This antibody is specific and shows minimal cross-reaction with other members of the EGFR-family. Receptors of this family are located on the plasma membrane and consist of an extracellular ligand-binding domain that is connected to a large intracellular domain by a single transmembrane sequence. ErbB2 protein is over-expressed in a variety of carcinomas especially those of breast and ovary.</p>
Clonality	Monoclonal
Species/Host	Mouse
Isotype	Mouse IgG2a, kappa
Conjugation	Unconjugated
Reactivity	Human
Buffer/Preservatives	0.2 mg/ml in 1X PBS with 0.1 mg/ml rAlbumin and 0.05% sodium azide
Purification	Protein G purified
Immunogen	Recombinant human protein was used as the immunogen for this ErbB2 antibody.(1)
Tested applications	ELISA, FACS, IF
Dilution range	ELISA (order BSA/sodium azide-free format for coating),Flow cytometry: 1-2ug/10 ⁶ cells,Immunofluorescence: 1-3ug/ml

Biorbyt Ltd.

7 Signet Court, Swann Road
Cambridge
CB5 8LA
United Kingdom

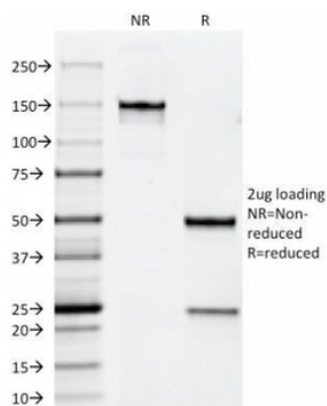
Email: info@biorbyt.com, support@biorbyt.com
Phone: [+44 \(0\)1223 859353](tel:+44(0)1223859353) | Fax: [+1 \(415\) 651-8558](tel:+1(415)651-8558)

Biorbyt LLC

68 TW Alexander Drive
Research Triangle Park
Durham
NC 27713-2847
United States

Email: info@biorbyt.com, support@biorbyt.com
Phone: [+1 \(415\) 906-5211](tel:+1(415)906-5211) | Fax: [+1 \(415\) 651-8558](tel:+1(415)651-8558)

Application notes	Variations in protocols, secondaries and substrates may require the antibody to be titrated for optimal performance.1. This ErbB2 antibody binds to the extracellular/cell surface region of the protein.
Antibody Type	Primary Antibody
Clone Number	HRB2/258
Storage	Maintain refrigerated at 2-8°C for up to 2 weeks. For long term storage store at -20°C in small aliquots to prevent freeze-thaw cycles.
Note	For research use only
Expiration Date	12 months from date of receipt.



SDS-PAGE Analysis of Purified, BSA-Free ErbB2 Antibody (clone HRB2/258). Confirmation of Integrity and Purity of the Antibody.

Biorbyt Ltd.

7 Signet Court, Swann Road
Cambridge
CB5 8LA
United Kingdom

Email: info@biorbyt.com, support@biorbyt.com

Phone: +44 (0)1223 859353 | Fax: +1 (415) 651-8558

Biorbyt LLC

68 TW Alexander Drive
Research Triangle Park
Durham
NC 27713-2847
United States

Email: info@biorbyt.com, support@biorbyt.com

Phone: +1 (415) 906-5211 | Fax: +1 (415) 651-8558