

Product Datasheet

Rabbit IgG Isotype Control Polyclonal Antibody FITC Conjugate (orb248103)

Catalog Number	orb248103
Category	Antibodies
Description	Isotype control antibodies are negative controls used to measure non-specific binding or background levels of a primary antibody in different cell types. They are not specific to any target in a cell, yet retain all non-specific characteristics of the antibodies they control.
Clonality	Polyclonal
Species/Host	Rabbit
Isotype	Rabbit IgG
Conjugation	FITC
Buffer/Preservatives	0.5 mg/ml antibody in PBS with 0.05% sodium azide
Purification	Protein A Affinity Chromatography
Immunogen	This is purified naive rabbit sera and as such there was no immunogen.
Tested applications	FC, IF, IHC
Dilution range	Flow Cytometry : assay dependent Immunohistochemistry : assay dependent Immunofluorescence : assay dependent
Application notes	Generally to be used at the same concentration as the sample being controlled for.
Antibody Type	Primary Antibody

Biorbyt Ltd.

7 Signet Court, Swann Road
Cambridge
CB5 8LA
United Kingdom

Email: info@biorbyt.com, support@biorbyt.com

Phone: [+44 \(0\)1223 859353](tel:+44(0)1223859353) | Fax: [+1 \(415\) 651-8558](tel:+1(415)651-8558)

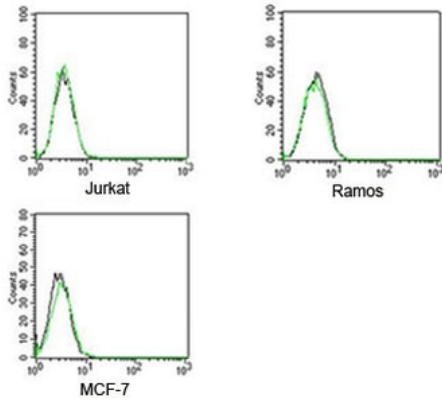
Biorbyt LLC

68 TW Alexander Drive
Research Triangle Park
Durham
NC 27713-2847
United States

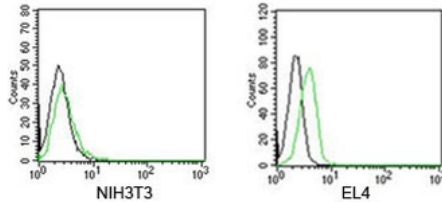
Email: info@biorbyt.com, support@biorbyt.com

Phone: [+1 \(415\) 906-5211](tel:+1(415)906-5211) | Fax: [+1 \(415\) 651-8558](tel:+1(415)651-8558)

Storage	Store the Rabbit IgG isotype control antibody at 4°C. Do not freeze; protect from light.
Note	For research use only
Expiration Date	12 months from date of receipt.



FACS testing of Rabbit IgG isotype control antibody FITC conjugate on human samples. Black = cells alone, green = isotype control antibody.



FACS testing of Rabbit IgG isotype control antibody FITC conjugate on mouse samples. Black = cells alone, green = isotype control antibody

Biorbyt Ltd.

7 Signet Court, Swann Road
Cambridge
CB5 8LA
United Kingdom

Email: info@biorbyt.com, support@biorbyt.com

Phone: +44 (0)1223 859353 | Fax: +1 (415) 651-8558

Biorbyt LLC

68 TW Alexander Drive
Research Triangle Park
Durham
NC 27713-2847
United States

Email: info@biorbyt.com, support@biorbyt.com

Phone: +1 (415) 906-5211 | Fax: +1 (415) 651-8558