

Product Datasheet

OPG Rabbit Polyclonal Antibody (orb247239)

| | |
|------------------------|--|
| Catalog Number | orb247239 |
| Category | Antibodies |
| Description | OPG Rabbit Polyclonal Antibody is an unconjugated antibody that specifically recognizes OPG. Generated against a KLH conjugated synthetic peptide derived from human OPG. The peptide is available as orb12899. It is supplied in liquid form and exhibits reactivity with Bovine, Canine, Human, Mouse and Rat samples. The suitable applications for this antibody are ELISA, ICC, IF, IHC-P and WB. |
| Target | OPG |
| Clonality | Polyclonal |
| Species/Host | Rabbit |
| Isotype | IgG |
| Conjugation | Unconjugated |
| Reactivity | Bovine, Canine, Human, Mouse, Rat |
| Form/Appearance | 10 mM PBS, 0.02% sodium azide |
| Concentration | - 100 µg (in 200 µl): 0.5 mg/ml- 200 µg (in 400 µl): 0.5 mg/ml |
| Purity | Purified by Protein A affinity chromatography. |
| Immunogen | KLH conjugated synthetic peptide derived from human OPG. Please contact us for the exact immunogen sequence. The peptide is available as orb12899. |
| UniProt ID | O00300 |
| MW | 43 kDa |

Biorbyt Ltd.

7 Signet Court, Swann Road
Cambridge
CB5 8LA
United Kingdom

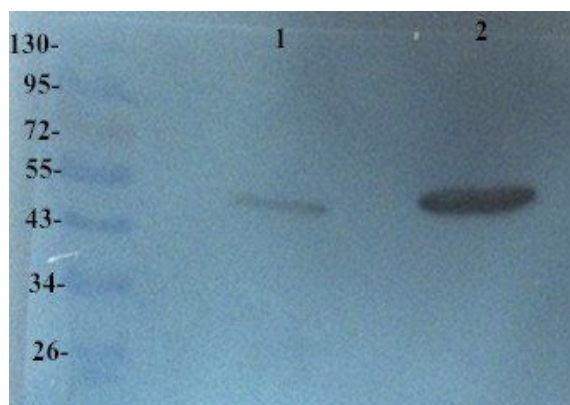
Email: info@biorbyt.com, support@biorbyt.com
Phone: [+44 \(0\)1223 859353](tel:+44(0)1223859353) | Fax: [+1 \(415\) 651-8558](tel:+1(415)651-8558)

Biorbyt LLC

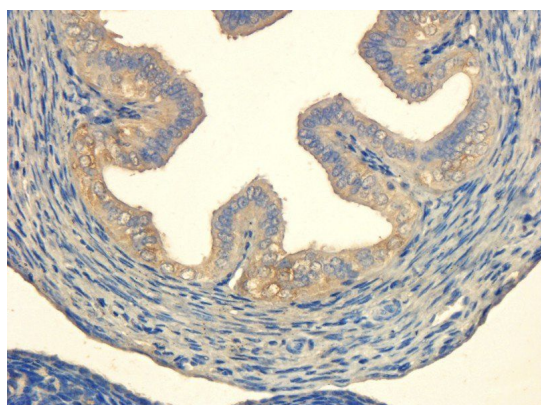
68 TW Alexander Drive
Research Triangle Park
Durham
NC 27713-2847
United States

Email: info@biorbyt.com, support@biorbyt.com
Phone: [+1 \(415\) 906-5211](tel:+1(415)906-5211) | Fax: [+1 \(415\) 651-8558](tel:+1(415)651-8558)

| | |
|----------------------------|---|
| Tested applications | ELISA, ICC, IF, IHC-P, WB |
| Dilution range | WB: 1:100-500, IHC-P: 1:100-500 (based on 0.5 mg/ml) |
| Storage | Maintain refrigerated at 2-8°C for up to 2 weeks. For long term storage store at -20°C in small aliquots to prevent freeze-thaw cycles. |
| Note | For research use only |
| Entrez | 4982 |
| NCBI | 002546, 31, 002537 |
| Expiration Date | 12 months from date of receipt. |



Western blot analysis of Rat heart (Lane 1), Rat liver (Lane 2) using OPG antibody (primary antibody dilution at 2 ug/ml)



Immunohistochemical staining of paraffin embedded mouse ovary tissue using anti-OPG (primary antibody at 1:200)

Biorbyt Ltd.

7 Signet Court, Swann Road
Cambridge
CB5 8LA
United Kingdom

Email: info@biorbyt.com, support@biorbyt.com

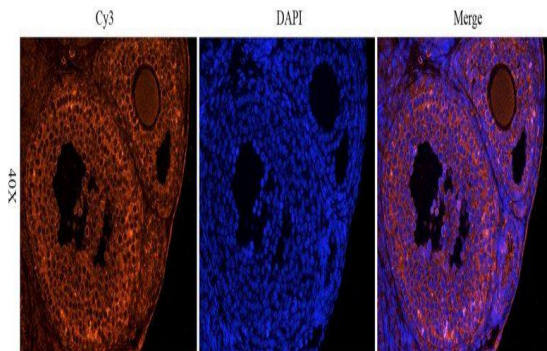
Phone: +44 (0)1223 859353 | Fax: +1 (415) 651-8558

Biorbyt LLC

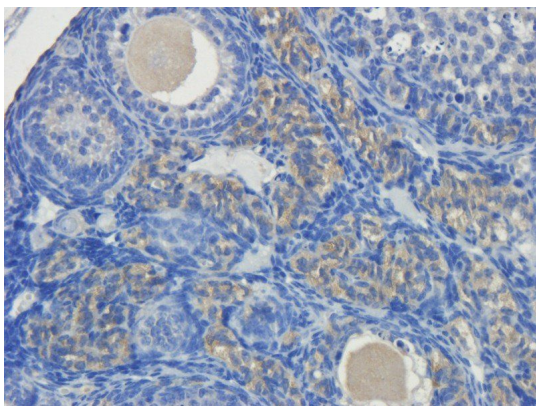
68 TW Alexander Drive
Research Triangle Park
Durham
NC 27713-2847
United States

Email: info@biorbyt.com, support@biorbyt.com

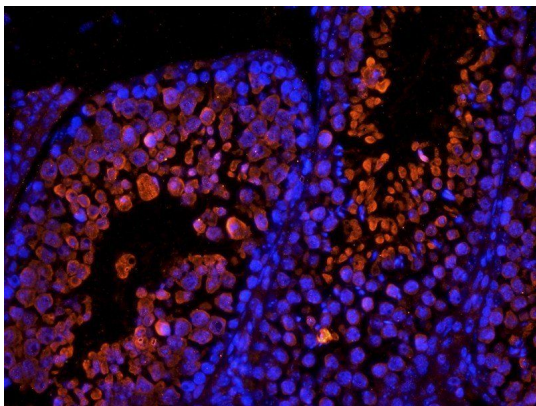
Phone: +1 (415) 906-5211 | Fax: +1 (415) 651-8558



IF image of mouse ovary tissue using OPG antibody (primary antibody at 1:200)



Immunohistochemical staining of mouse ovary tissue using OPG antibody (dilution of primary antibody - 1:200)



Immunofluorescence analysis of mouse testis tissue using anti-OPG (dilution of primary antibody - 1:200)

Biorbyt Ltd.

7 Signet Court, Swann Road
Cambridge
CB5 8LA
United Kingdom

Email: info@biorbyt.com, support@biorbyt.com

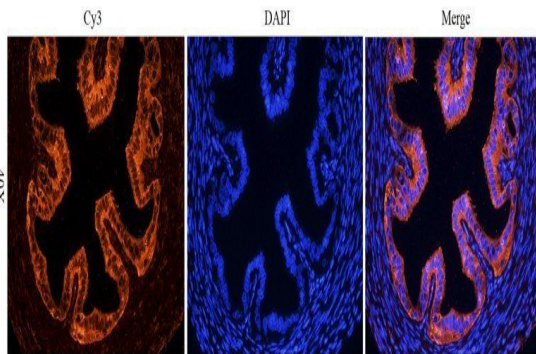
Phone: [+44 \(0\)1223 859353](tel:+44(0)1223859353) | Fax: [+1 \(415\) 651-8558](tel:+1(415)651-8558)

Biorbyt LLC

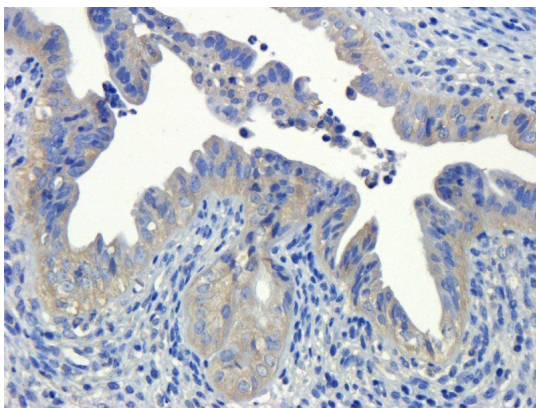
68 TW Alexander Drive
Research Triangle Park
Durham
NC 27713-2847
United States

Email: info@biorbyt.com, support@biorbyt.com

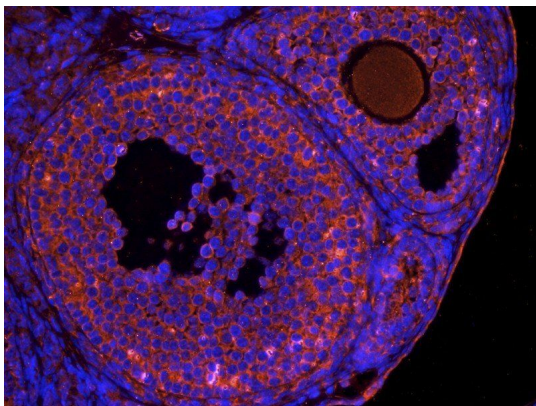
Phone: [+1 \(415\) 906-5211](tel:+1(415)906-5211) | Fax: [+1 \(415\) 651-8558](tel:+1(415)651-8558)



IF image of mouse ovary tissue using anti-OPG (primary antibody at 1:200)



IHC-P image of mouse ovary tissue using anti-OPG (dilution of primary antibody at 1:200)



IF analysis of mouse ovary tissue using OPG antibody (dilution of primary antibody at 1:200)

Biorbyt Ltd.

7 Signet Court, Swann Road
Cambridge
CB5 8LA
United Kingdom

Email: info@biorbyt.com, support@biorbyt.com

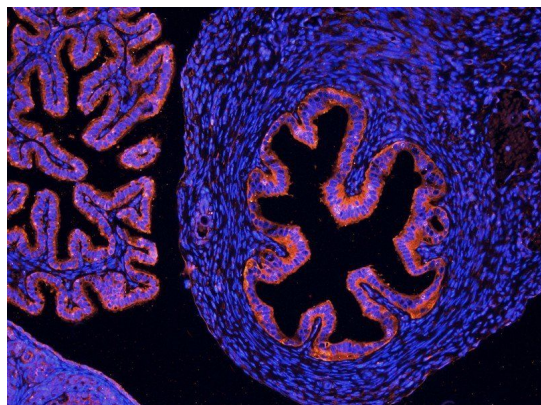
Phone: +44 (0)1223 859353 | Fax: +1 (415) 651-8558

Biorbyt LLC

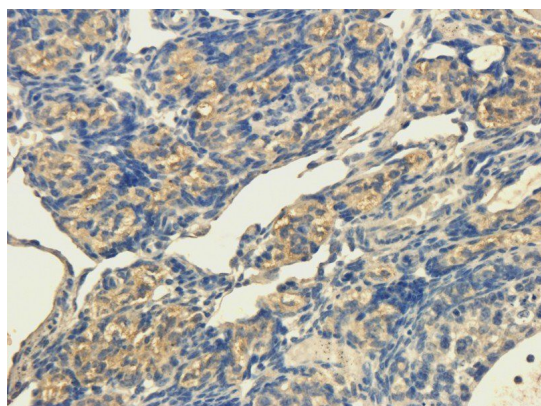
68 TW Alexander Drive
Research Triangle Park
Durham
NC 27713-2847
United States

Email: info@biorbyt.com, support@biorbyt.com

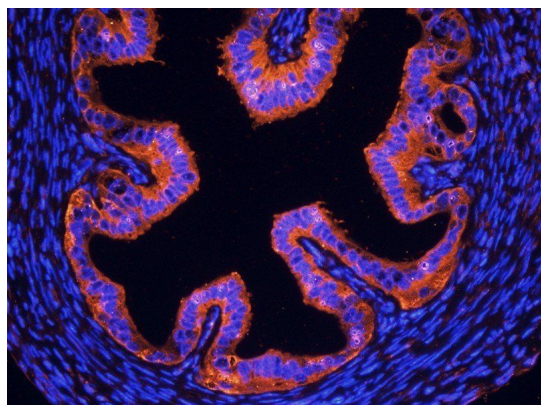
Phone: +1 (415) 906-5211 | Fax: +1 (415) 651-8558



Immunofluorescence analysis of mouse ovary tissue using OPG antibody (dilution of primary antibody - 1:200)



Immunohistochemical staining of paraffin embedded mouse ovary tissue using OPG antibody (primary antibody at 1:200)



Immunofluorescence image of mouse ovary tissue using anti-OPG (dilution at 1:200)

Biorbyt Ltd.

7 Signet Court, Swann Road
Cambridge
CB5 8LA
United Kingdom

Email: info@biorbyt.com, support@biorbyt.com

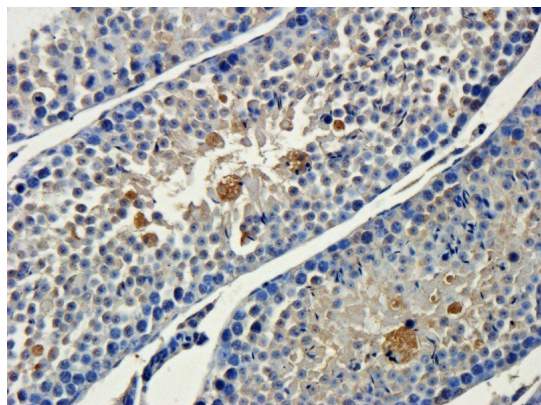
Phone: [+44 \(0\)1223 859353](tel:+44(0)1223859353) | Fax: [+1 \(415\) 651-8558](tel:+1(415)651-8558)

Biorbyt LLC

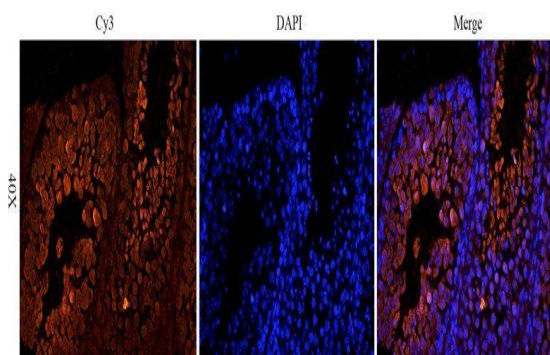
68 TW Alexander Drive
Research Triangle Park
Durham
NC 27713-2847
United States

Email: info@biorbyt.com, support@biorbyt.com

Phone: [+1 \(415\) 906-5211](tel:+1(415)906-5211) | Fax: [+1 \(415\) 651-8558](tel:+1(415)651-8558)



IHC-P staining of mouse testis tissue using OPG antibody (dilution at 1:200)



Immunofluorescence analysis of mouse testis tissue using OPG antibody (dilution of primary antibody - 1:200)

Biorbyt Ltd.

7 Signet Court, Swann Road
Cambridge
CB5 8LA
United Kingdom

Email: info@biorbyt.com, support@biorbyt.com

Phone: [+44 \(0\)1223 859353](tel:+44(0)1223859353) | Fax: [+1 \(415\) 651-8558](tel:+1(415)651-8558)

Biorbyt LLC

68 TW Alexander Drive
Research Triangle Park
Durham
NC 27713-2847
United States

Email: info@biorbyt.com, support@biorbyt.com

Phone: [+1 \(415\) 906-5211](tel:+1(415)906-5211) | Fax: [+1 \(415\) 651-8558](tel:+1(415)651-8558)