

Product Datasheet

Apelin antibody (orb247238)

Catalog Number	orb247238
Category	Antibodies
Description	Apelin antibody
Target	Apelin
Clonality	Polyclonal
Species/Host	Rabbit
Isotype	IgG
Conjugation	Unconjugated
Reactivity	Human, Mouse, Rat
Form/Appearance	10 mM PBS, 0.02% sodium azide
Concentration	- 100 µg (in 200 µl): 0.5 mg/ml- 200 µg (in 400 µl): 0.5 mg/ml
Purity	Purified by Protein A affinity chromatography.
Immunogen	KLH conjugated synthetic peptide derived from human Apelin. Please contact us for the exact immunogen sequence. The peptide is available as orb374853.
UniProt ID	Q9ULZ1, Q9R0R4, Q9R0R3
MW	10 kDa
Tested applications	ELISA, ICC, IF, IHC-P
Storage	Maintain refrigerated at 2-8°C for up to 2 weeks. For long term storage store at -20°C in small aliquots to prevent freeze-thaw cycles.

Biorbyt Ltd.

7 Signet Court, Swann Road
Cambridge
CB5 8LA
United Kingdom

Email: info@biorbyt.com, support@biorbyt.com

Phone: [+44 \(0\)1223 859353](tel:+44(0)1223859353) | Fax: [+1 \(415\) 651-8558](tel:+1(415)651-8558)

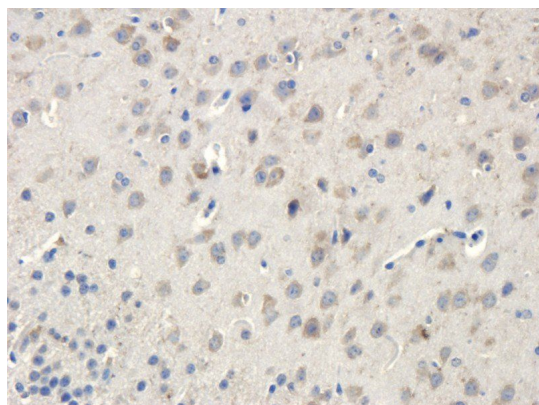
Biorbyt LLC

68 TW Alexander Drive
Research Triangle Park
Durham
NC 27713
United States

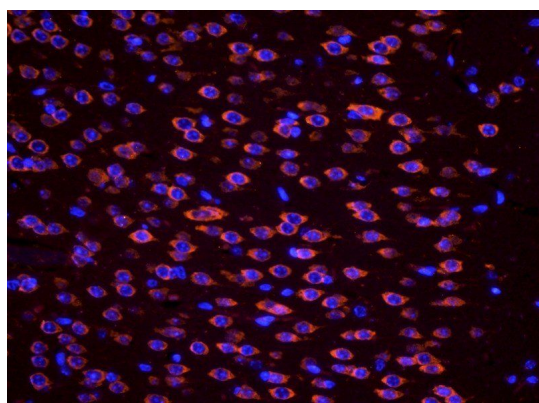
Email: info@biorbyt.com, support@biorbyt.com

Phone: [+1 \(415\) 906-5211](tel:+1(415)906-5211) | Fax: [+1 \(415\) 651-8558](tel:+1(415)651-8558)

Note	For research use only
Entrez	8862
NCBI	31, 017413, 41, 059109
Expiration Date	12 months from date of receipt.



Immunohistochemical staining of paraffin embedded mouse brain tissue using anti-Apelin (primary antibody at 1:200)



IF analysis of mouse brain tissue using Apelin antibody (dilution of primary antibody at 1:200)

Biorbyt Ltd.

7 Signet Court, Swann Road
Cambridge
CB5 8LA
United Kingdom

Email: info@biorbyt.com, support@biorbyt.com

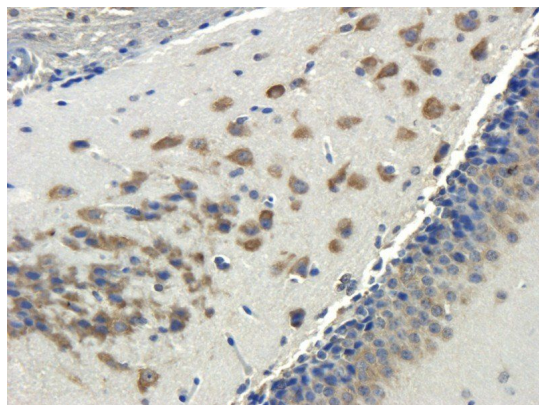
Phone: [+44 \(0\)1223 859353](tel:+44(0)1223859353) | Fax: [+1 \(415\) 651-8558](tel:+1(415)651-8558)

Biorbyt LLC

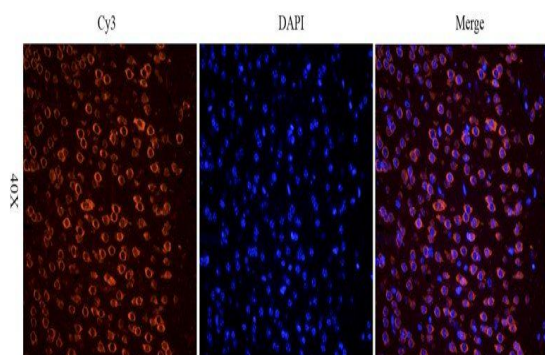
68 TW Alexander Drive
Research Triangle Park
Durham
NC 27713
United States

Email: info@biorbyt.com, support@biorbyt.com

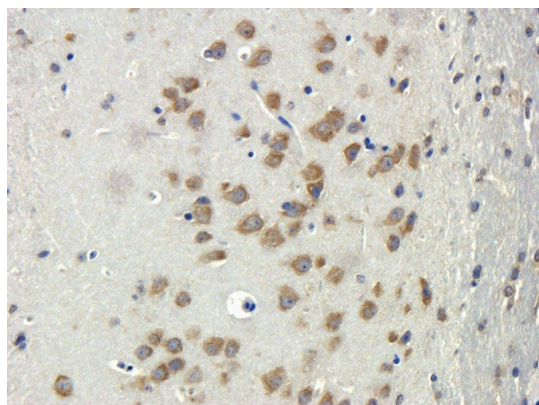
Phone: [+1 \(415\) 906-5211](tel:+1(415)906-5211) | Fax: [+1 \(415\) 651-8558](tel:+1(415)651-8558)



Immunohistochemical staining of mouse brain tissue using anti-Apelin (dilution of primary antibody - 1:200)



Immunofluorescence analysis of mouse brain tissue using anti-Apelin (dilution of primary antibody - 1:200)



IHC-P staining of mouse brain tissue using anti-Apelin (dilution at 1:200)

Biorbyt Ltd.

7 Signet Court, Swann Road
Cambridge
CB5 8LA
United Kingdom

Email: info@biorbyt.com, support@biorbyt.com

Phone: +44 (0)1223 859353 | Fax: +1 (415) 651-8558

Biorbyt LLC

68 TW Alexander Drive
Research Triangle Park
Durham
NC 27713
United States

Email: info@biorbyt.com, support@biorbyt.com

Phone: +1 (415) 906-5211 | Fax: +1 (415) 651-8558