

Product Datasheet

Antigen KI-67 Rabbit Polyclonal Antibody (orb247042)

Catalog Number	orb247042
Category	Antibodies
Description	Antigen KI-67 Rabbit Polyclonal Antibody
Target	Antigen KI-67
Clonality	Polyclonal
Species/Host	Rabbit
Isotype	IgG
Conjugation	Unconjugated
Form/Appearance	10 mM PBS, 0.02% sodium azide, 10 mg/ml rAlbumin
Purity	Polyclonal antibodies are purified by peptide affinity chromatography
Immunogen	KLH conjugated synthetic peptide derived from human Antigen KI-67. Please contact us for the exact immunogen sequence.
UniProt ID	P46013
MW	55kDa
Tested applications	IHC-P, WB
Dilution range	IHC-P: 1:50-1:500
Storage	Maintain refrigerated at 2-8°C for up to 2 weeks. For long term storage store at -20°C in small aliquots to prevent freeze-thaw cycles.

Biorbyt Ltd.

7 Signet Court, Swann Road
Cambridge
CB5 8LA
United Kingdom

Email: info@biorbyt.com, support@biorbyt.com

Phone: [+44 \(0\)1223 859353](tel:+44(0)1223859353) | Fax: [+1 \(415\) 651-8558](tel:+1(415)651-8558)

Biorbyt LLC

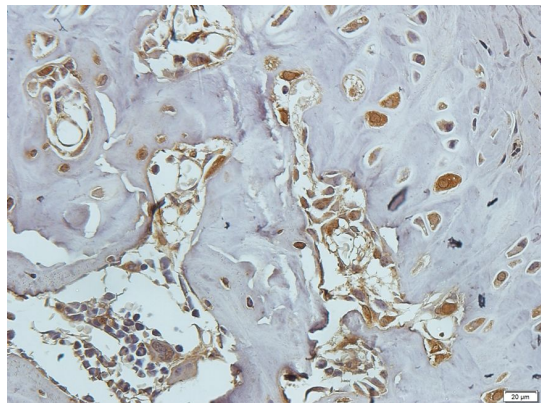
68 TW Alexander Drive
Research Triangle Park
Durham
NC 27713
United States

Email: info@biorbyt.com, support@biorbyt.com

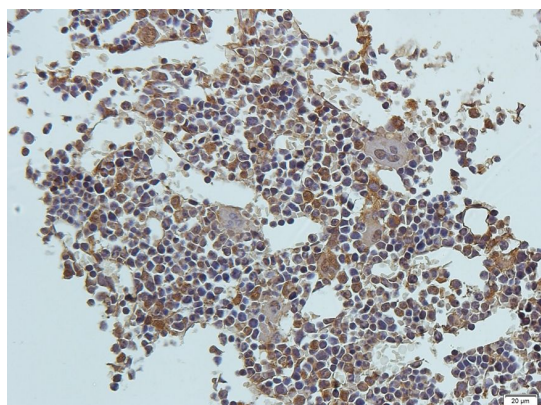
Phone: [+1 \(415\) 906-5211](tel:+1(415)906-5211) | Fax: [+1 \(415\) 651-8558](tel:+1(415)651-8558)

Note For research use only

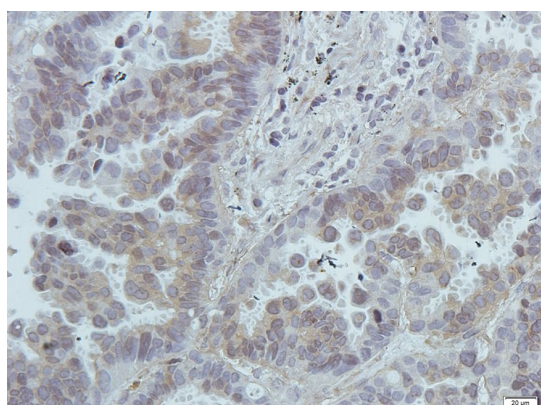
Expiration Date 12 months from date of receipt.



IHC-P staining of guinea pig bone marrow tissue using Antigen KI-67 antibody (2.5ug/ml)



IHC-P staining of guinea pig bone marrow tissue using anti-Antigen KI-67 (2.5ug/ml)



IHC-P staining of human lung cancer tissue using anti-Antigen KI-67 (2.5ug/ml)

Biorbyt Ltd.

7 Signet Court, Swann Road
Cambridge
CB5 8LA
United Kingdom

Email: info@biorbyt.com, support@biorbyt.com

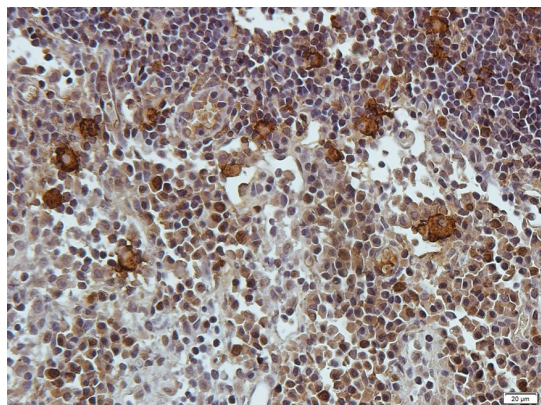
Phone: +44 (0)1223 859353 | Fax: +1 (415) 651-8558

Biorbyt LLC

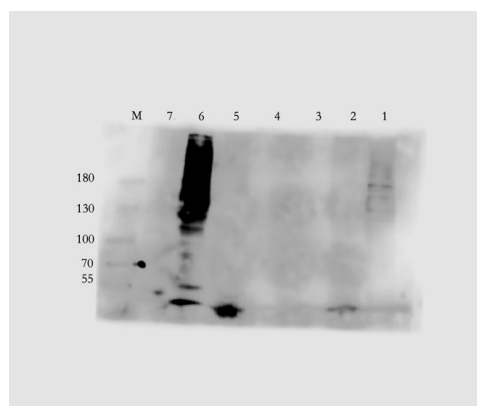
68 TW Alexander Drive
Research Triangle Park
Durham
NC 27713
United States

Email: info@biorbyt.com, support@biorbyt.com

Phone: +1 (415) 906-5211 | Fax: +1 (415) 651-8558



IHC-P image of rat lymph node tissue using Antigen Ki-67 antibody (2.5ug/ml)



WB analysis of rat spleen (Lane1), rat bone marrow (Lane2), rat thyroid (Lane3), rat testis (Lane4), U251 (Lane5), human lung cancer (Lane6) using Ki67 antibody

Biorbyt Ltd.

7 Signet Court, Swann Road
Cambridge
CB5 8LA
United Kingdom

Email: info@biorbyt.com, support@biorbyt.com

Phone: [+44 \(0\)1223 859353](tel:+44(0)1223859353) | Fax: [+1 \(415\) 651-8558](tel:+1(415)651-8558)

Biorbyt LLC

68 TW Alexander Drive
Research Triangle Park
Durham
NC 27713
United States

Email: info@biorbyt.com, support@biorbyt.com

Phone: [+1 \(415\) 906-5211](tel:+1(415)906-5211) | Fax: [+1 \(415\) 651-8558](tel:+1(415)651-8558)