

Product Datasheet

Yeast fabD protein (orb246859)

Catalog Number	orb246859
Category	Proteins
Description	This Yeast fabD protein spans the amino acid sequence from region 1-308aa. Purity: Greater than 90% as determined by SDS-PAGE.
Tag	N-terminal 6xHis-tagged
Form/Appearance	Liquid or Lyophilized powder
Buffer/Preservatives	If the delivery form is liquid, the default storage buffer is Tris/PBS-based buffer, 5%-50% glycerol. If the delivery form is lyophilized powder, the buffer before lyophilization is Tris/PBS-based buffer, 6% Trehalose, pH 8.0.
Purity	Greater than 90% as determined by SDS-PAGE.
Protein Sequence	MSKTAIIFPGQGAQKVGMAQDLFNNNDQATEILTSAANTLDFDILETMFTDEEGKLGETENT QPALLTHSSALLAALKNLNPDFTMGHSLGEYSSLVAADVLSFEDAVKIVRKRKQLMAQAFPT GVGSMAAVLGLDFDKVDEICKSLSSDDKIIEPANINCPGQIVVSGHKALIDELVEKGKSLGAK RVMPPLAVSGPFHSSLMKVEEDFSSYINQFEWRDAKFPVVQNVNAQGETDKEVIKSNMVKQ LYSPVQFINSTEWLIDQGVDHFIEIGPGKVLGSLIKKINRDVKLTSIQTLEDVKGWNEND
Protein Length	Full Length
UniProt ID	Q5HGK3
MW	35.6 kDa
Application notes	This is His-tag protein
Source	Yeast
Biological Origin	Staphylococcus aureus (strain COL)

Biorbyt Ltd.

7 Signet Court, Swann Road
Cambridge
CB5 8LA
United Kingdom

Email: info@biorbyt.com, support@biorbyt.com
Phone: [+44 \(0\)1223 859353](tel:+44(0)1223859353) | Fax: [+1 \(415\) 651-8558](tel:+1(415)651-8558)

Biorbyt LLC

68 TW Alexander Drive
Research Triangle Park
Durham
NC 27713
United States

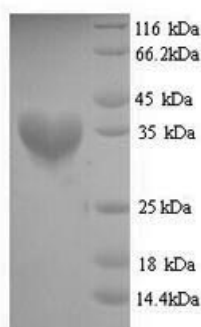
Email: info@biorbyt.com, support@biorbyt.com
Phone: [+1 \(415\) 906-5211](tel:+1(415)906-5211) | Fax: [+1 \(415\) 651-8558](tel:+1(415)651-8558)

Expression Region 1-308aa

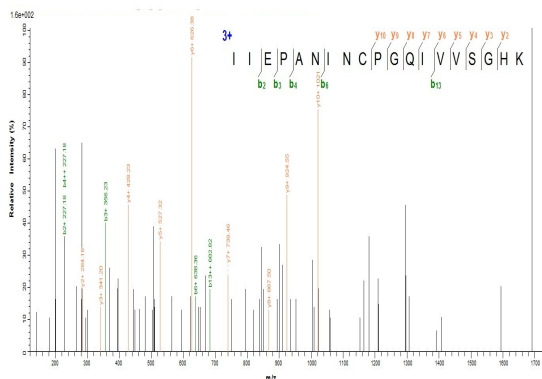
Storage The shelf life is related to many factors, storage state, buffer ingredients, storage temperature and the stability of the protein itself. Generally, the shelf life of liquid form is 6 months at -20°C/-80°C. The shelf life of lyophilized form is 12 months at -20°C/-80°C.

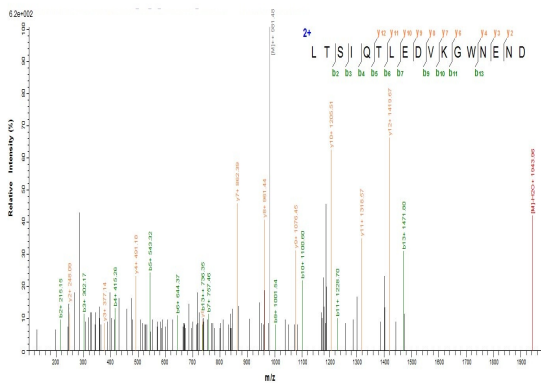
Note For research use only

Expiration Date 6 months from date of receipt.



(Tris-Glycine gel) Discontinuous SDS-PAGE (reduced) with 5% enrichment gel and 15% separation gel.





Based on the SEQUEST from database of Yeast host and target protein, the LC-MS/MS Analysis result could indicate that this peptide derived from Yeast-expressed *Staphylococcus aureus* (strain COL) fabD.

Biorbyt Ltd.

7 Signet Court, Swann Road
Cambridge
CB5 8LA
United Kingdom

Email: info@biorbyt.com, support@biorbyt.com

Phone: [+44 \(0\)1223 859353](tel:+44(0)1223859353) | Fax: [+1 \(415\) 651-8558](tel:+1(415)6518558)

Biorbyt LLC

68 TW Alexander Drive
Research Triangle Park
Durham
NC 27713
United States

Email: info@biorbyt.com, support@biorbyt.com

Phone: [+1 \(415\) 906-5211](tel:+1(415)9065211) | Fax: [+1 \(415\) 651-8558](tel:+1(415)6518558)