

Product Datasheet

Human CYP11A1 protein (orb244151)

Catalog Number	orb244151
Category	Proteins
Description	This Human CYP11A1 protein spans the amino acid sequence from region 40-521aa. Purity: Greater than 90% as determined by SDS-PAGE.
Tag	N-terminal 6xHis-SUMO-tagged
Form/Appearance	Liquid or Lyophilized powder
Buffer/Preservatives	If the delivery form is liquid, the default storage buffer is Tris/PBS-based buffer, 5%-50% glycerol. If the delivery form is lyophilized powder, the buffer before lyophilization is Tris/PBS-based buffer, 6% Trehalose, pH 8.0.
Purity	Greater than 90% as determined by SDS-PAGE.
Protein Sequence	ISTRSPRPFNEIPSPGDNGWLNLYHFWRETGTHKVLHVVQNFQKYGPIYREKLGNVESVY VIDPEDVALLFKSEGNPERFLIPPVWAYHQYYQRPIGVLLKKSAAWKKDRVALNQEVMAP ATKNFLPLLDVSRDFVSVLHRRIKKAGSGNYSGDISDDLFRFAFESITNVIFGERQGMLEEV VNPEAQRVIDAIYQMFHTSVPMNLNPPDLFRLFRKTWKDHAVAWVDFSKADIYTNFYW ELRQKGSVHHDYRGILYRLLGDSKMSFEDIKANVTEMLAGGVDTTSMTLQWHL YEMARNL KVQDMLRAEVLAAHQQAQGD MATMLQLVPLLKASIKETLRLHPISVTLQRYLVNDLVLRDY MIPAKTLVQVAIYALGREPTFFFDPENFDPTRWLSKDKNITYFRNLGFGWGVQRCLGRRIAE LEMTIFLINMLENFRVEIQHLSDVGTTFNLILMPEKPISFTFWPFNQEATQQ
Protein Length	Full Length of Mature Protein
UniProt ID	P05108
MW	72.1 kDa
Application notes	Full length of His-SUMO-tag and expression region is 40-521aa
Source	E.coli

Biorbyt Ltd.

7 Signet Court, Swann Road
Cambridge
CB5 8LA
United Kingdom

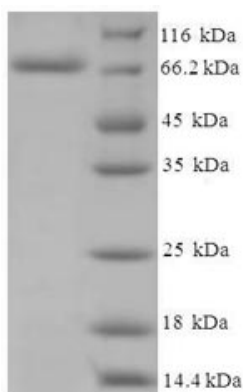
Email: info@biorbyt.com, support@biorbyt.com
Phone: [+44 \(0\)1223 859353](tel:+44(0)1223859353) | Fax: [+1 \(415\) 651-8558](tel:+1(415)651-8558)

Biorbyt LLC

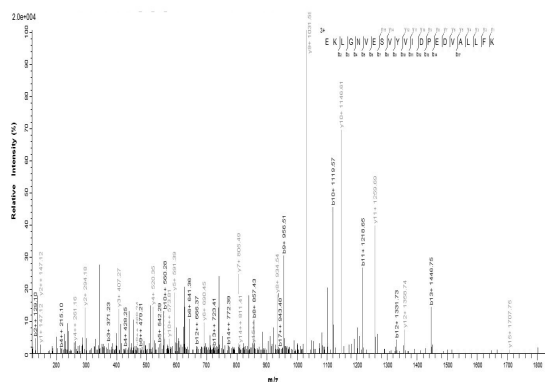
68 TW Alexander Drive
Research Triangle Park
Durham
NC 27713
United States

Email: info@biorbyt.com, support@biorbyt.com
Phone: [+1 \(415\) 906-5211](tel:+1(415)906-5211) | Fax: [+1 \(415\) 651-8558](tel:+1(415)651-8558)

Biological Origin	Homo sapiens (Human)
Expression Region	40-521aa
Storage	The shelf life is related to many factors, storage state, buffer ingredients, storage temperature and the stability of the protein itself. Generally, the shelf life of liquid form is 6 months at -20°C/-80°C. The shelf life of lyophilized form is 12 months at -20°C/-80°C.
Note	For research use only
Expiration Date	6 months from date of receipt.



(Tris-Glycine gel) Discontinuous SDS-PAGE (reduced) with 5% enrichment gel and 15% separation gel.



Based on the SEQUEST from database of E.coli host and target protein, the LC-MS/MS Analysis result could indicate that this peptide derived from E.coli-expressed Homo sapiens (Human) CYP11A1.

Biorbyt Ltd.

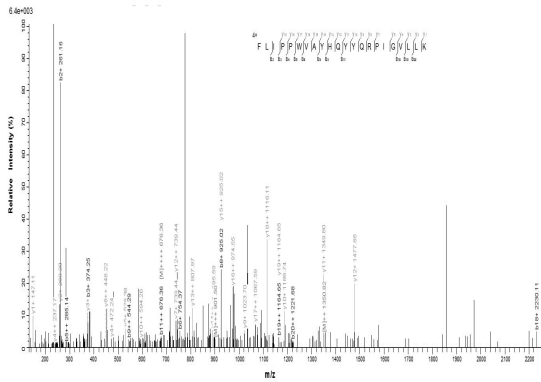
7 Signet Court, Swann Road
Cambridge
CB5 8LA
United Kingdom

Email: info@biorbyt.com, support@biorbyt.com
Phone: +44 (0)1223 859353 | Fax: +1 (415) 651-8558

Biorbyt LLC

68 TW Alexander Drive
Research Triangle Park
Durham
NC 27713
United States

Email: info@biorbyt.com, support@biorbyt.com
Phone: +1 (415) 906-5211 | Fax: +1 (415) 651-8558



Based on the SEQUEST from database of E.coli host and target protein, the LC-MS/MS Analysis result could indicate that this peptide derived from E.coli-expressed Homo sapiens (Human) CYP11A1.

Biorbyt Ltd.

7 Signet Court, Swann Road
Cambridge
CB5 8LA
United Kingdom

Email: info@biorbyt.com, support@biorbyt.com
Phone: [+44 \(0\)1223 859353](tel:+44(0)1223859353) | Fax: [+1 \(415\) 651-8558](tel:+1(415)6518558)

Biorbyt LLC

68 TW Alexander Drive
Research Triangle Park
Durham
NC 27713
United States

Email: info@biorbyt.com, support@biorbyt.com
Phone: [+1 \(415\) 906-5211](tel:+1(415)9065211) | Fax: [+1 \(415\) 651-8558](tel:+1(415)6518558)