

## Product Datasheet

### Ki-67 Antibody (PE) (orb243941)

<b>Catalog Number</b>	orb243941
<b>Category</b>	Antibodies
<b>Description</b>	Mouse monoclonal antibody against Ki-67 conjugated to PE
<b>Target</b>	Ki-67
<b>Clonality</b>	Monoclonal
<b>Isotype</b>	Mouse IgG1
<b>Conjugation</b>	PE
<b>Reactivity</b>	Bovine, Human
<b>Buffer/Preservatives</b>	Stabilizing phosphate buffered saline (PBS), pH 7.4, 15 mM sodium azide
<b>Purification</b>	Purified antibody is conjugated with R-phycoerythrin (PE) under optimum conditions. Unconjugated antibody and free fluorochrome are removed by size-exclusion chromatography.
<b>Immunogen</b>	Nuclei of the Hodgkin lymphoma cell line L428
<b>UniProt ID</b>	<b>P46013</b>
<b>Tested applications</b>	FC
<b>Application notes</b>	Flow cytometry: The reagent is designed for analysis of human blood cells using 10 µl reagent / 100 µl of whole blood or 10 <sup>6</sup> cells in a suspension. The content of a vial (1 ml) is sufficient for 100 tests. Intracellular staining.
<b>Specificity</b>	The mouse monoclonal antibody Ki-67 recognizes Ki-67 antigen, a non-histone nuclear protein expressed exclusively in proliferating cells.

**Biorbyt Ltd.**

7 Signet Court, Swann Road  
Cambridge  
CB5 8LA  
United Kingdom

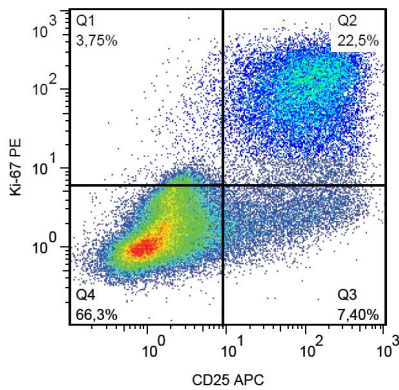
Email: [info@biorbyt.com](mailto:info@biorbyt.com), [support@biorbyt.com](mailto:support@biorbyt.com)  
Phone: [+44 \(0\)1223 859353](tel:+44(0)1223859353) | Fax: [+1 \(415\) 651-8558](tel:+1(415)651-8558)

**Biorbyt LLC**

68 TW Alexander Drive  
Research Triangle Park  
Durham  
NC 27713  
United States

Email: [info@biorbyt.com](mailto:info@biorbyt.com), [support@biorbyt.com](mailto:support@biorbyt.com)  
Phone: [+1 \(415\) 906-5211](tel:+1(415)906-5211) | Fax: [+1 \(415\) 651-8558](tel:+1(415)651-8558)

<b>Antibody Type</b>	Primary Antibody
<b>Clone Number</b>	Ki-67
<b>Storage</b>	Store at 2-8°C. Protect from prolonged exposure to light. Do not freeze.
<b>Note</b>	For research use only
<b>Entrez</b>	<b>4288</b>
<b>Expiration Date</b>	12 months from date of receipt.



Flow cytometry analysis of human peripheral blood mononuclear cells stimulated with PHA. Surface staining of CD25 (clone MEM-181 APC) was followed by permeabilization and nuclear staining of Ki-67 (clone Ki-67 PE).

**Biorbyt Ltd.**

7 Signet Court, Swann Road  
Cambridge  
CB5 8LA  
United Kingdom

Email: [info@biorbyt.com](mailto:info@biorbyt.com), [support@biorbyt.com](mailto:support@biorbyt.com)

Phone: [+44 \(0\)1223 859353](tel:+44(0)1223859353) | Fax: [+1 \(415\) 651-8558](tel:+1(415)651-8558)

**Biorbyt LLC**

68 TW Alexander Drive  
Research Triangle Park  
Durham  
NC 27713  
United States

Email: [info@biorbyt.com](mailto:info@biorbyt.com), [support@biorbyt.com](mailto:support@biorbyt.com)

Phone: [+1 \(415\) 906-5211](tel:+1(415)906-5211) | Fax: [+1 \(415\) 651-8558](tel:+1(415)651-8558)