

## Product Datasheet

### PD-1 Biosimilar Antibody (orb2321976)

<b>Catalog Number</b>	orb2321976
<b>Category</b>	Antibodies
<b>Description</b>	Anti-Canine PD-1(INTERVET 4F12) mAb
<b>Target</b>	PD-1
<b>Clonality</b>	Monoclonal
<b>Species/Host</b>	Chimeric Rabbit
<b>Isotype</b>	Rabbit IgG
<b>Conjugation</b>	Unconjugated
<b>Reactivity</b>	Canine
<b>Reconstitution</b>	Lyophilized from sterile PBS, pH 7.4. Normally 5 % - 8% trehalose is added as protectants before lyophilization. Please see Certificate of Analysis for specific instructions of reconstitution.
<b>Purification</b>	Purified from cell culture supernatant by affinity chromatography
<b>UniProt ID</b>	NP_001301026.1
<b>Tested applications</b>	ELISA, FC
<b>Dilution range</b>	ELISA 1:5000-10000, Flow Cyt 1:100
<b>Antibody Type</b>	Biosimilar Antibody
<b>Storage</b>	Maintain refrigerated at 2-8°C for up to 2 weeks. For long term storage store at -20°C in small aliquots to prevent freeze-thaw cycles.

**Biorbyt Ltd.**

7 Signet Court, Swann Road  
Cambridge  
CB5 8LA  
United Kingdom

Email: [info@biorbyt.com](mailto:info@biorbyt.com), [support@biorbyt.com](mailto:support@biorbyt.com)  
Phone: [+44 \(0\)1223 859353](tel:+44(0)1223859353) | Fax: [+1 \(415\) 651-8558](tel:+1(415)651-8558)

**Biorbyt LLC**

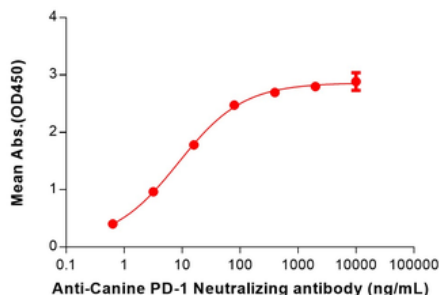
68 TW Alexander Drive  
Research Triangle Park  
Durham  
NC 27713-2847  
United States

Email: [info@biorbyt.com](mailto:info@biorbyt.com), [support@biorbyt.com](mailto:support@biorbyt.com)  
Phone: [+1 \(415\) 906-5211](tel:+1(415)906-5211) | Fax: [+1 \(415\) 651-8558](tel:+1(415)651-8558)

**Note** For research use only

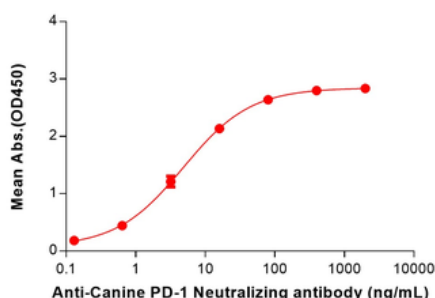
**Expiration Date** 12 months from date of receipt.

**Anti-Canine PD-1(INTERVET 4F12) mAb ELISA**  
0.2 µg of Canine PD-1, His tagged protein per well



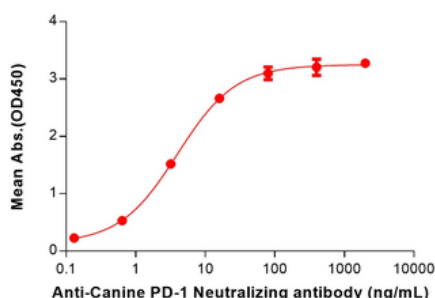
ELISA plate pre-coated by 2 µg/mL (100 µL/well) Canine PD-1 Protein, His Tag (orb2321235) can bind Anti-Canine PD-1 (INTERVET 4F12) mAb (orb2321976) in a linear range of 0.64–80 ng/ml.

**Anti-Canine PD-1(INTERVET 4F12) mAb ELISA**  
0.2 µg of Canine PD-1, hFc tagged protein per well



ELISA plate pre-coated by 2 µg/mL (100 µL/well) Canine PD-1 Protein, hFc Tag (orb2321232) can bind Anti-Canine PD-1 (INTERVET 4F12) mAb (orb2321976) in a linear range of 0.64–80 ng/ml.

**Anti-Canine PD-1(INTERVET 4F12) mAb ELISA**  
0.2 µg of Canine PD-1, mFc tagged protein per well



ELISA plate pre-coated by 2 µg/mL (100 µL/well) Canine PD-1 Protein, mFc Tag (orb2321234) can bind Anti-Canine PD-1 (INTERVET 4F12) mAb (orb2321976) in a linear range of 0.64–80 ng/ml.

**Biorbyt Ltd.**

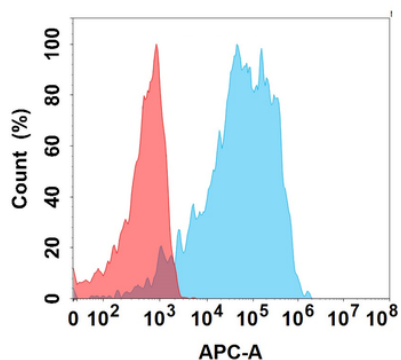
7 Signet Court, Swann Road  
Cambridge  
CB5 8LA  
United Kingdom

Email: [info@biorbyt.com](mailto:info@biorbyt.com), [support@biorbyt.com](mailto:support@biorbyt.com)  
Phone: +44 (0)1223 859353 | Fax: +1 (415) 651-8558

**Biorbyt LLC**

68 TW Alexander Drive  
Research Triangle Park  
Durham  
NC 27713-2847  
United States

Email: [info@biorbyt.com](mailto:info@biorbyt.com), [support@biorbyt.com](mailto:support@biorbyt.com)  
Phone: +1 (415) 906-5211 | Fax: +1 (415) 651-8558



Flow cytometry analysis with 1  $\mu\text{g}/\text{mL}$  Anti-Canine PD-1 (INTERVET 4F12) mAb (orb2321976) on Expi293 cells transfected with Canine PD-1 protein (Blue histogram) or Expi293 transfected with irrelevant protein (Red histogram).

**Biorbyt Ltd.**

7 Signet Court, Swann Road  
Cambridge  
CB5 8LA  
United Kingdom

Email: [info@biorbyt.com](mailto:info@biorbyt.com), [support@biorbyt.com](mailto:support@biorbyt.com)

Phone: [+44 \(0\)1223 859353](tel:+44(0)1223859353) | Fax: [+1 \(415\) 651-8558](tel:+1(415)651-8558)

**Biorbyt LLC**

68 TW Alexander Drive  
Research Triangle Park  
Durham  
NC 27713-2847  
United States

Email: [info@biorbyt.com](mailto:info@biorbyt.com), [support@biorbyt.com](mailto:support@biorbyt.com)

Phone: [+1 \(415\) 906-5211](tel:+1(415)906-5211) | Fax: [+1 \(415\) 651-8558](tel:+1(415)651-8558)