

Product Datasheet

LY6E Biosimilar Antibody (orb2321969)

Catalog Number	orb2321969
Category	Antibodies
Description	Anti-LY6E(RG7841 biosimilar) mAb
Target	LY6E
Clonality	Monoclonal
Species/Host	Human Humanized
Isotype	Human IgG1 - kappa
Conjugation	Unconjugated
Reactivity	Human
Reconstitution	Lyophilized from sterile PBS, pH 7.4. Normally 5 % - 8% trehalose is added as protectants before lyophilization. Please see Certificate of Analysis for specific instructions.
Purification	Purified from cell culture supernatant by affinity chromatography
UniProt ID	Q16553
Tested applications	ELISA, FC
Dilution range	ELISA 1:5000-10000, Flow Cyt 1:100
Antibody Type	Biosimilar Antibody
Storage	Maintain refrigerated at 2-8°C for up to 2 weeks. For long term storage store at -20°C in small aliquots to prevent freeze-thaw cycles.

Biorbyt Ltd.

7 Signet Court, Swann Road
Cambridge
CB5 8LA
United Kingdom

Email: info@biorbyt.com, support@biorbyt.com
Phone: [+44 \(0\)1223 859353](tel:+44(0)1223859353) | Fax: [+1 \(415\) 651-8558](tel:+1(415)651-8558)

Biorbyt LLC

68 TW Alexander Drive
Research Triangle Park
Durham
NC 27713-2847
United States

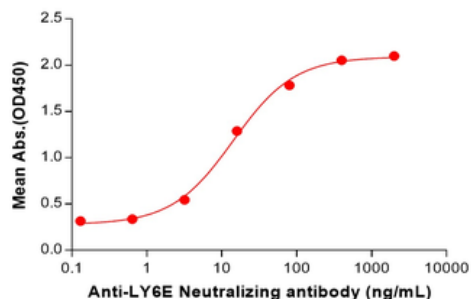
Email: info@biorbyt.com, support@biorbyt.com
Phone: [+1 \(415\) 906-5211](tel:+1(415)906-5211) | Fax: [+1 \(415\) 651-8558](tel:+1(415)651-8558)

Note For research use only

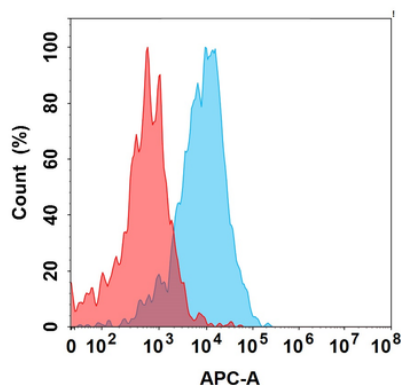
Expiration Date 12 months from date of receipt.

Anti-LY6E(RG7841 biosimilar) mAb ELISA

0.2 µg of Human LY6E, hFc tagged protein per well



ELISA plate pre-coated by 2 µg/mL (100 µL/well) Human LY6E Protein, hFc Tag (orb2321340) can bind Anti-LY6E (RG7841 biosimilar) mAb (orb2321969) in a linear range of 3.20–80 ng/ml. In order to specifically detect orb2321969, mouse anti-human Fab-specific antibody was used as detection antibody.



Flow cytometry analysis with 15 µg/mL Anti-LY6E (RG7841 biosimilar) mAb (orb2321969) on Expi293 cells transfected with Human LY6E protein (Blue histogram) or Expi293 transfected with irrelevant protein (Red histogram).

Biorbyt Ltd.

7 Signet Court, Swann Road
Cambridge
CB5 8LA
United Kingdom

Email: info@biorbyt.com, support@biorbyt.com

Phone: +44 (0)1223 859353 | Fax: +1 (415) 651-8558

Biorbyt LLC

68 TW Alexander Drive
Research Triangle Park
Durham
NC 27713-2847
United States

Email: info@biorbyt.com, support@biorbyt.com

Phone: +1 (415) 906-5211 | Fax: +1 (415) 651-8558