

Product Datasheet

TEM1 Biosimilar Antibody (orb2321961)

Catalog Number	orb2321961
Category	Antibodies
Description	Anti-TEM1(ontuxizumab biosimilar) mAb
Target	TEM1
Clonality	Monoclonal
Species/Host	Chimeric Humanized
Isotype	Human IgG1(E356D,M358L,S403F) - Kappa
Conjugation	Unconjugated
Reactivity	Human
Reconstitution	Lyophilized from sterile PBS, pH 7.4. Normally 5 % - 8% trehalose is added as protectants before lyophilization. Please see Certificate of Analysis for specific instructions of reconstitution.
Purification	Purified from cell culture supernatant by affinity chromatography
UniProt ID	Q9HCU0
Tested applications	ELISA, FC
Dilution range	ELISA 1:5000-10000, Flow Cyt 1:100
Antibody Type	Biosimilar Antibody
Storage	Maintain refrigerated at 2-8°C for up to 2 weeks. For long term storage store at -20°C in small aliquots to prevent freeze-thaw cycles.

Biorbyt Ltd.

7 Signet Court, Swann Road
Cambridge
CB5 8LA
United Kingdom

Email: info@biorbyt.com, support@biorbyt.com
Phone: [+44 \(0\)1223 859353](tel:+44(0)1223859353) | Fax: [+1 \(415\) 651-8558](tel:+1(415)651-8558)

Biorbyt LLC

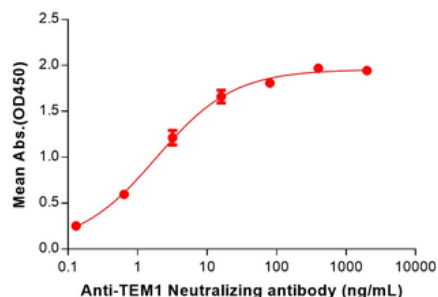
68 TW Alexander Drive
Research Triangle Park
Durham
NC 27713-2847
United States

Email: info@biorbyt.com, support@biorbyt.com
Phone: [+1 \(415\) 906-5211](tel:+1(415)906-5211) | Fax: [+1 \(415\) 651-8558](tel:+1(415)651-8558)

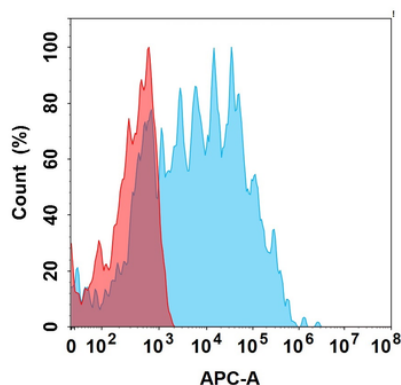
Note For research use only

Expiration Date 12 months from date of receipt.

Anti-TEM1(ontuxizumab biosimilar) mAb ELISA
0.2 µg of Human TEM1, His tagged protein per well



ELISA plate pre-coated by 2 µg/mL (100 µL/well) Human TEM1 Protein, His Tag (orb1290954) can bind Anti-TEM1 (ontuxizumab biosimilar) mAb (orb2321961) in a linear range of 0.13–16 ng/ml.



Flow cytometry analysis with 1 µg/mL Anti-TEM1 (ontuxizumab biosimilar) mAb (orb2321961) on Expi293 cells transfected with Human TEM1 protein (Blue histogram) or Expi293 transfected with irrelevant protein (Red histogram).

Biorbyt Ltd.

7 Signet Court, Swann Road
Cambridge
CB5 8LA
United Kingdom

Email: info@biorbyt.com, support@biorbyt.com
Phone: +44 (0)1223 859353 | Fax: +1 (415) 651-8558

Biorbyt LLC

68 TW Alexander Drive
Research Triangle Park
Durham
NC 27713-2847
United States

Email: info@biorbyt.com, support@biorbyt.com
Phone: +1 (415) 906-5211 | Fax: +1 (415) 651-8558