

Product Datasheet

beta 1 Adrenergic Receptor Rabbit Polyclonal Antibody (orb229828)

Catalog Number	orb229828
Category	Antibodies
Description	beta 1 Adrenergic Receptor Rabbit Polyclonal Antibody
Target	beta 1 Adrenergic Receptor
Clonality	Polyclonal
Species/Host	Rabbit
Isotype	IgG
Conjugation	Unconjugated
Reactivity	Canine, Human, Mouse, Porcine, Rat
Form/Appearance	10 mM PBS, 0.02% sodium azide
Concentration	- 100 µg (in 200 µl): 0.5 mg/ml- 200 µg (in 400 µl): 0.5 mg/ml
Purity	Polyclonal antibodies are purified by peptide affinity chromatography
Immunogen	KLH conjugated synthetic peptide derived from human beta 1 Adrenergic Receptor. Please contact us for the exact immunogen sequence. The peptide is available as orb374842.
UniProt ID	P34971, P08588, P18090
MW	55 kDa
Tested applications	ELISA, ICC, IF, IHC-P, WB

Biorbyt Ltd.

7 Signet Court, Swann Road
Cambridge
CB5 8LA
United Kingdom

Email: info@biorbyt.com, support@biorbyt.com

Phone: [+44 \(0\)1223 859353](tel:+44(0)1223859353) | Fax: [+1 \(415\) 651-8558](tel:+1(415)651-8558)

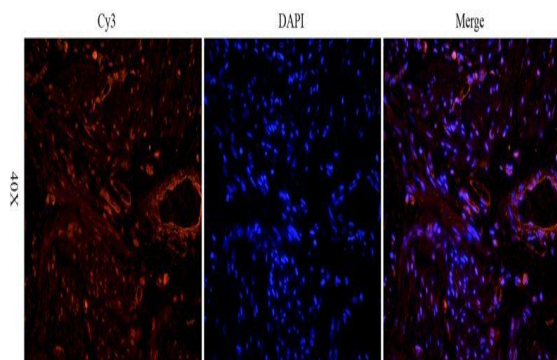
Biorbyt LLC

68 TW Alexander Drive
Research Triangle Park
Durham
NC 27713
United States

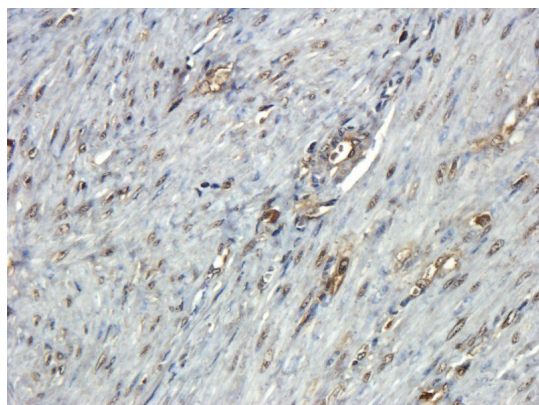
Email: info@biorbyt.com, support@biorbyt.com

Phone: [+1 \(415\) 906-5211](tel:+1(415)906-5211) | Fax: [+1 \(415\) 651-8558](tel:+1(415)651-8558)

Dilution range	IF/ICC: 1:100, IHC-P:1:100, WB:1:100-500
Application notes	This antibody against Human, Mouse, Rat, Dog, Pig
Storage	Maintain refrigerated at 2-8°C for up to 2 weeks. For long term storage store at -20°C in small aliquots to prevent freeze-thaw cycles.
Note	For research use only
Entrez	153
NCBI	000684, 11, 21, 000675
Expiration Date	12 months from date of receipt.



IF image of human endometrial cancer tissue using beta 1 Adrenergic Receptor antibody (primary antibody at 1:100)



IHC-P staining of human endometrial cancer tissue using anti-beta 1 Adrenergic Receptor (dilution at 1:100)

Biorbyt Ltd.

7 Signet Court, Swann Road
Cambridge
CB5 8LA
United Kingdom

Email: info@biorbyt.com, support@biorbyt.com

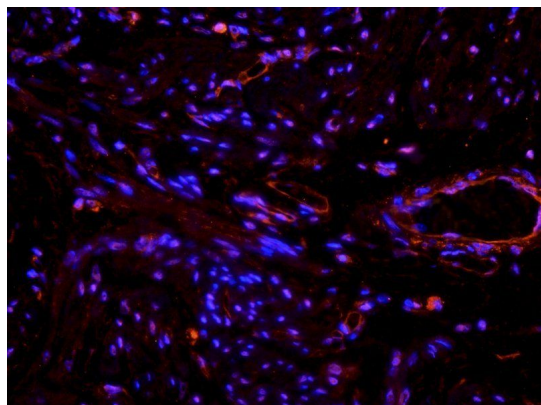
Phone: [+44 \(0\)1223 859353](tel:+44(0)1223859353) | Fax: [+1 \(415\) 651-8558](tel:+1(415)651-8558)

Biorbyt LLC

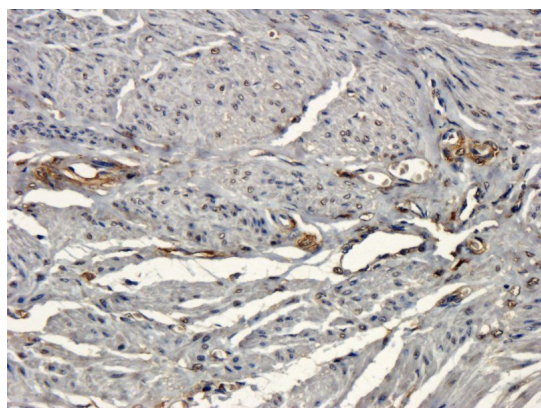
68 TW Alexander Drive
Research Triangle Park
Durham
NC 27713
United States

Email: info@biorbyt.com, support@biorbyt.com

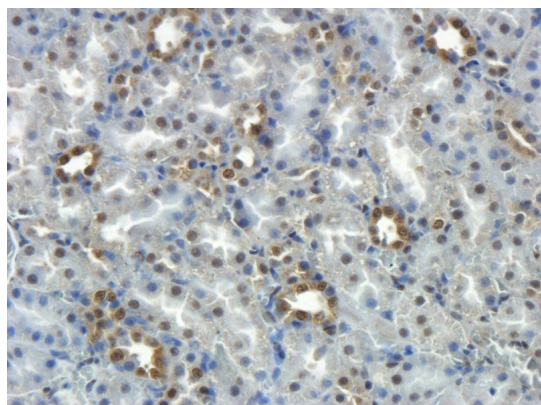
Phone: [+1 \(415\) 906-5211](tel:+1(415)906-5211) | Fax: [+1 \(415\) 651-8558](tel:+1(415)651-8558)



Immunofluorescence image of human endometrial cancer tissue using anti-beta 1 Adrenergic Receptor (dilution at 1:100)



IHC-P image of human endometrial cancer tissue using anti-beta 1 Adrenergic Receptor (dilution of primary antibody at 1:100)



Immunohistochemical staining of paraffin embedded rat kidney tissue using beta 1 Adrenergic Receptor antibody (primary antibody at 1:100)

Biorbyt Ltd.

7 Signet Court, Swann Road
Cambridge
CB5 8LA
United Kingdom

Email: info@biorbyt.com, support@biorbyt.com

Phone: [+44 \(0\)1223 859353](tel:+44(0)1223859353) | Fax: [+1 \(415\) 651-8558](tel:+1(415)651-8558)

Biorbyt LLC

68 TW Alexander Drive
Research Triangle Park
Durham
NC 27713
United States

Email: info@biorbyt.com, support@biorbyt.com

Phone: [+1 \(415\) 906-5211](tel:+1(415)906-5211) | Fax: [+1 \(415\) 651-8558](tel:+1(415)651-8558)