

## Product Datasheet

# MKK1/2 (Phospho-S218/222) Rabbit Polyclonal Antibody (orb224176)

|                             |   |
|-----------------------------|---|
| <b>Catalog Number</b>       | orb224176   |
| <b>Category</b>             | Antibodies  |
| <b>Description</b>          | The MKK1/2 (Phospho-S218/222) Antibody is suitable for IHC, WB. It is a Polyclonal, Unconjugated antibody which raised against KLH-conjugated synthetic phosphopeptide corresponding to residues surrounding S218/222 of human MKK1/2 protein. The exact sequence is proprietary. Purification: The antibody was purified by immunogen affinity chromatography. |
| <b>Target</b>               | MAP2K1; MAP2K2  |
| <b>Clonality</b>            | Polyclonal  |
| <b>Species/Host</b>         | Rabbit  |
| <b>Conjugation</b>          | Unconjugated  |
| <b>Reactivity</b>           | Canine, Gallus, Human, Mouse, Rabbit, Rat, Zebrafish  |
| <b>Form/Appearance</b>      | Liquid  |
| <b>Buffer/Preservatives</b> | 0.42% Potassium phosphate, 0.87% Sodium chloride, pH 7.3, 30% glycerol, and 0.01% sodium azide.   |
| <b>Purification</b>         | The antibody was purified by immunogen affinity chromatography.   |
| <b>Immunogen</b>            | KLH-conjugated synthetic phosphopeptide corresponding to residues surrounding S218/222 of human MKK1/2 protein. The exact sequence is proprietary.  |
| <b>UniProt ID</b>           | <b><a href="#">Q63932</a>, <a href="#">P36506</a>, <a href="#">P31938</a>, <a href="#">Q01986</a>, <a href="#">P36507</a>, <a href="#">Q02750</a></b>   |

**Biorbyt Ltd.**

7 Signet Court, Swann Road  
Cambridge  
CB5 8LA  
United Kingdom

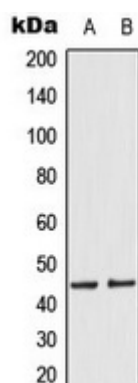
Email: [info@biorbyt.com](mailto:info@biorbyt.com), [support@biorbyt.com](mailto:support@biorbyt.com)  
Phone: [+44 \(0\)1223 859353](tel:+44(0)1223859353) | Fax: [+1 \(415\) 651-8558](tel:+1(415)651-8558)

**Biorbyt LLC**

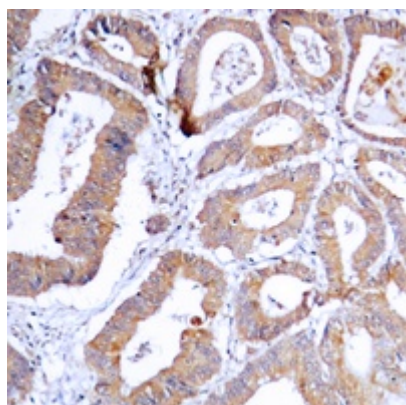
68 TW Alexander Drive  
Research Triangle Park  
Durham  
NC 27713  
United States

Email: [info@biorbyt.com](mailto:info@biorbyt.com), [support@biorbyt.com](mailto:support@biorbyt.com)  
Phone: [+1 \(415\) 906-5211](tel:+1(415)906-5211) | Fax: [+1 \(415\) 651-8558](tel:+1(415)651-8558)

|                            |   |
|----------------------------|---|
| <b>Tested applications</b> | IHC, WB   |
| <b>Dilution range</b>      | WB: 1:500-1:1000, IHC-P: 1:100-1:200  |
| <b>Specificity</b>         | Recognizes endogenous levels of MKK1/2 protein only when phosphorylated at S218/222.  |
| <b>Antibody Type</b>       | Primary Antibody  |
| <b>Storage</b>             | Maintain refrigerated at 2-8°C for up to 2 weeks. For long term storage store at -20°C in small aliquots to prevent freeze-thaw cycles. |
| <b>Note</b>                | For research use only   |
| <b>Entrez</b>              | <b>170851, 5605, 58960, 26395, 5604, 26396</b>  |
| <b>Expiration Date</b>     | 12 months from date of receipt.   |



Western blot analysis of MKK1/2 (Phospho-S218/222) expression in HeLa EGF-treated (A), A431 EGF-treated (B) whole cell lysates. (Predicted band size: 43; 44 kD; Observed band size: 45 kD)



Immunohistochemical analysis of MKK1/2 (Phospho-S218/222) staining in human colon cancer formalin fixed paraffin embedded tissue section. The section was pre-treated using heat mediated antigen retrieval with sodium citrate buffer (Phospho-H 6.0). The section was then incubated with the antibody at room temperature and detected using an HRP conjugated compact polymer system. DAB was used as the chromogen. The section was then counterstained with haematoxylin and mounted with DPX.

**Biorbyt Ltd.**

7 Signet Court, Swann Road  
Cambridge  
CB5 8LA  
United Kingdom

Email: [info@biorbyt.com](mailto:info@biorbyt.com), [support@biorbyt.com](mailto:support@biorbyt.com)

Phone: [+44 \(0\)1223 859353](tel:+44(0)1223859353) | Fax: [+1 \(415\) 651-8558](tel:+1(415)651-8558)

**Biorbyt LLC**

68 TW Alexander Drive  
Research Triangle Park  
Durham  
NC 27713  
United States

Email: [info@biorbyt.com](mailto:info@biorbyt.com), [support@biorbyt.com](mailto:support@biorbyt.com)

Phone: [+1 \(415\) 906-5211](tel:+1(415)906-5211) | Fax: [+1 \(415\) 651-8558](tel:+1(415)651-8558)