

## Product Datasheet

# IGF1 Receptor Rabbit Polyclonal Antibody (orb214087)

|                             |  |
|-----------------------------|--|
| <b>Catalog Number</b>       | orb214087  |
| <b>Category</b>             | Antibodies   |
| <b>Description</b>          | The IGF1 Receptor Antibody is suitable for WB. It is a Polyclonal, Unconjugated antibody which raised against KLH-conjugated synthetic peptide encompassing a sequence within the C-term region of human IGF1 Receptor. The exact sequence is proprietary. Purification: The antibody was purified by immunogen affinity chromatography. |
| <b>Target</b>               | IGF1R  |
| <b>Clonality</b>            | Polyclonal   |
| <b>Species/Host</b>         | Rabbit   |
| <b>Conjugation</b>          | Unconjugated   |
| <b>Reactivity</b>           | Bovine, Gallus, Human, Mouse, Rat, Zebrafish   |
| <b>Form/Appearance</b>      | Liquid   |
| <b>Buffer/Preservatives</b> | 0.42% Potassium phosphate, 0.87% Sodium chloride, pH 7.3, 30% glycerol, and 0.01% sodium azide.  |
| <b>Purification</b>         | The antibody was purified by immunogen affinity chromatography.  |
| <b>Immunogen</b>            | KLH-conjugated synthetic peptide encompassing a sequence within the C-term region of human IGF1 Receptor. The exact sequence is proprietary.   |
| <b>UniProt ID</b>           | <b>P08069, Q60751, P24062</b>  |
| <b>Tested applications</b>  | WB   |

**Biorbyt Ltd.**

7 Signet Court, Swann Road  
Cambridge  
CB5 8LA  
United Kingdom

Email: [info@biorbyt.com](mailto:info@biorbyt.com), [support@biorbyt.com](mailto:support@biorbyt.com)

Phone: [+44 \(0\)1223 859353](tel:+44(0)1223859353) | Fax: [+1 \(415\) 651-8558](tel:+1(415)651-8558)

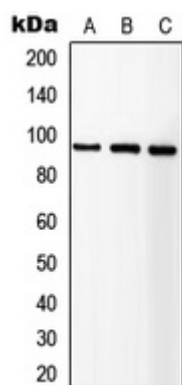
**Biorbyt LLC**

68 TW Alexander Drive  
Research Triangle Park  
Durham  
NC 27713-2847  
United States

Email: [info@biorbyt.com](mailto:info@biorbyt.com), [support@biorbyt.com](mailto:support@biorbyt.com)

Phone: [+1 \(415\) 906-5211](tel:+1(415)906-5211) | Fax: [+1 \(415\) 651-8558](tel:+1(415)651-8558)

|                        |   |
|------------------------|---|
| <b>Dilution range</b>  | WB: 1-500-1-1000  |
| <b>Specificity</b>     | Recognizes endogenous levels of IGF1 Receptor protein.  |
| <b>Antibody Type</b>   | Primary Antibody  |
| <b>Storage</b>         | Maintain refrigerated at 2-8°C for up to 2 weeks. For long term storage store at -20°C in small aliquots to prevent freeze-thaw cycles. |
| <b>Note</b>            | For research use only   |
| <b>Entrez</b>          | <b>16001, 3480, 25718</b>   |
| <b>Expiration Date</b> | 12 months from date of receipt.   |



Western blot analysis of IGF1 Receptor expression in HEK293T (A), SP2/0 (B), NIH3T3 (C) whole cell lysates. (Predicted band size: 154 kD; Observed band size: 95; 200 kD)

**Biorbyt Ltd.**

7 Signet Court, Swann Road  
Cambridge  
CB5 8LA  
United Kingdom

Email: [info@biorbyt.com](mailto:info@biorbyt.com), [support@biorbyt.com](mailto:support@biorbyt.com)

Phone: [+44 \(0\)1223 859353](tel:+44(0)1223859353) | Fax: [+1 \(415\) 651-8558](tel:+1(415)651-8558)

**Biorbyt LLC**

68 TW Alexander Drive  
Research Triangle Park  
Durham  
NC 27713-2847  
United States

Email: [info@biorbyt.com](mailto:info@biorbyt.com), [support@biorbyt.com](mailto:support@biorbyt.com)

Phone: [+1 \(415\) 906-5211](tel:+1(415)906-5211) | Fax: [+1 \(415\) 651-8558](tel:+1(415)651-8558)