

Product Datasheet

GLUR2 Rabbit Polyclonal Antibody (orb214008)

Catalog Number	orb214008
Category	Antibodies
Description	The GLUR2 Antibody is suitable for IHC, WB. It is a Polyclonal, Unconjugated antibody which raised against KLH-conjugated synthetic peptide encompassing a sequence within the C-term region of human GLUR2. The exact sequence is proprietary. Purification: The antibody was purified by immunogen affinity chromatography.
Target	GRIA2
Clonality	Polyclonal
Species/Host	Rabbit
Conjugation	Unconjugated
Reactivity	Gallus, Human, Monkey, Mouse, Rat, Zebrafish
Form/Appearance	Liquid
Buffer/Preservatives	0.42% Potassium phosphate, 0.87% Sodium chloride, pH 7.3, 30% glycerol, and 0.01% sodium azide.
Purification	The antibody was purified by immunogen affinity chromatography.
Immunogen	KLH-conjugated synthetic peptide encompassing a sequence within the C-term region of human GLUR2. The exact sequence is proprietary.
UniProt ID	P19491, P42262, P23819
MW	98 kDa
Tested applications	IHC, WB

Biorbyt Ltd.

7 Signet Court, Swann Road
Cambridge
CB5 8LA
United Kingdom

Email: info@biorbyt.com, support@biorbyt.com

Phone: [+44 \(0\)1223 859353](tel:+44(0)1223859353) | Fax: [+1 \(415\) 651-8558](tel:+1(415)651-8558)

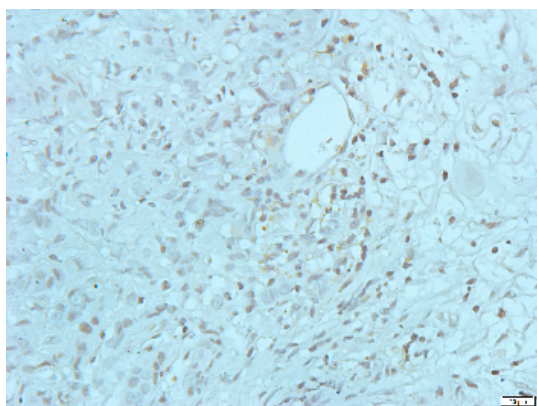
Biorbyt LLC

68 TW Alexander Drive
Research Triangle Park
Durham
NC 27713-2847
United States

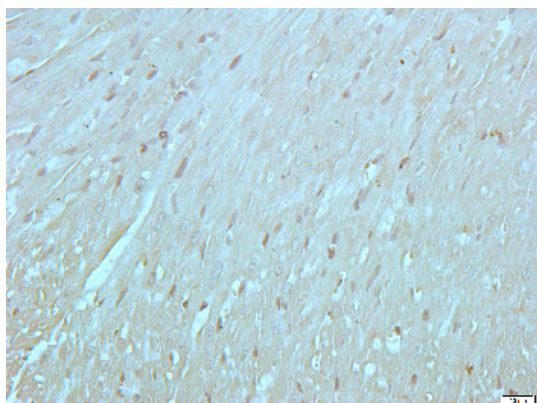
Email: info@biorbyt.com, support@biorbyt.com

Phone: [+1 \(415\) 906-5211](tel:+1(415)906-5211) | Fax: [+1 \(415\) 651-8558](tel:+1(415)651-8558)

Dilution range	WB: 1-500-1-1000
Specificity	Recognizes endogenous levels of GLUR2 protein.
Antibody Type	Primary Antibody
Storage	Maintain refrigerated at 2-8°C for up to 2 weeks. For long term storage store at -20°C in small aliquots to prevent freeze-thaw cycles.
Note	For research use only
Entrez	14800, 2891, 29627
Expiration Date	12 months from date of receipt.



Immunohistochemical analysis of paraffin-embedded human breast cancer using GLUR2 Rabbit Polyclonal Antibody orb214008 with dilution at 1:100.



Immunohistochemical analysis of paraffin-embedded mouse heart using GLUR2 Rabbit Polyclonal Antibody orb214008 with dilution at 1:100.

Biorbyt Ltd.

7 Signet Court, Swann Road
Cambridge
CB5 8LA
United Kingdom

Email: info@biorbyt.com, support@biorbyt.com
Phone: [+44 \(0\)1223 859353](tel:+44(0)1223859353) | Fax: [+1 \(415\) 651-8558](tel:+1(415)6518558)

Biorbyt LLC

68 TW Alexander Drive
Research Triangle Park
Durham
NC 27713-2847
United States

Email: info@biorbyt.com, support@biorbyt.com
Phone: [+1 \(415\) 906-5211](tel:+1(415)9065211) | Fax: [+1 \(415\) 651-8558](tel:+1(415)6518558)