

Product Datasheet

FYN (Phospho-Y530) Rabbit Polyclonal Antibody (orb213956)

Catalog Number	orb213956
Category	Antibodies
Description	The FYN (Phospho-Y530) Antibody is suitable for IF, IHC, IP, WB. It is a Polyclonal, Unconjugated antibody which raised against KLH-conjugated synthetic phosphopeptide corresponding to residues surrounding Y530 of human FYN protein. The exact sequence is proprietary. Purification: The antibody was purified by immunogen affinity chromatography.
Target	FYN
Clonality	Polyclonal
Species/Host	Rabbit
Conjugation	Unconjugated
Reactivity	Bovine, Human, Mouse, Porcine, Rat, Zebrafish
Form/Appearance	Liquid
Buffer/Preservatives	0.42% Potassium phosphate, 0.87% Sodium chloride, pH 7.3, 30% glycerol, and 0.01% sodium azide.
Purification	The antibody was purified by immunogen affinity chromatography.
Immunogen	KLH-conjugated synthetic phosphopeptide corresponding to residues surrounding Y530 of human FYN protein. The exact sequence is proprietary.
UniProt ID	Q62844, P06241, P39688
MW	60 kDa

Biorbyt Ltd.

7 Signet Court, Swann Road
Cambridge
CB5 8LA
United Kingdom

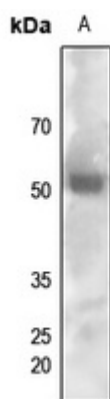
Email: info@biorbyt.com, support@biorbyt.com
Phone: [+44 \(0\)1223 859353](tel:+44(0)1223859353) | Fax: [+1 \(415\) 651-8558](tel:+1(415)651-8558)

Biorbyt LLC

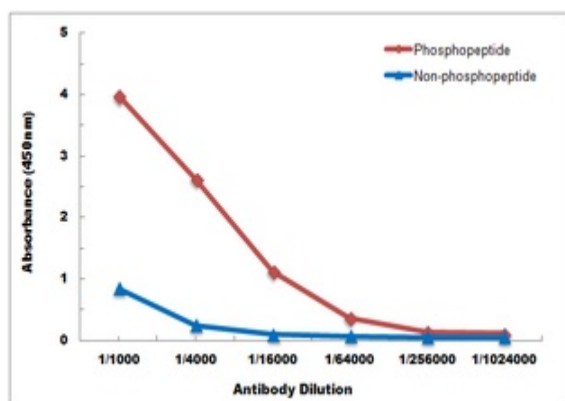
68 TW Alexander Drive
Research Triangle Park
Durham
NC 27713
United States

Email: info@biorbyt.com, support@biorbyt.com
Phone: [+1 \(415\) 906-5211](tel:+1(415)906-5211) | Fax: [+1 \(415\) 651-8558](tel:+1(415)651-8558)

Tested applications	IF, IHC, IP, WB
Dilution range	WB: 1-500-1-1000, IHC-P: 1-100-1-200, IP: 1-10-1-100
Specificity	Recognizes endogenous levels of FYN protein only when phosphorylated at Y530.
Antibody Type	Primary Antibody
Storage	Maintain refrigerated at 2-8°C for up to 2 weeks. For long term storage store at -20°C in small aliquots to prevent freeze-thaw cycles.
Note	For research use only
Entrez	14360, 2534, 25150
Expiration Date	12 months from date of receipt.



Western blot analysis of FYN (Phospho-Y530) expression in HEK293T (A) whole cell lysates. (Predicted band size: 60 kD; Observed band size: 60 kD)



Direct ELISA antibody dose-response curve using Anti-FYN (Phospho-Y530) Antibody. Antigen (Phosphopeptide and non-phosphopeptide) concentration is 5 ug/ml. Goat Anti-Rabbit IgG (H&L) - HRP was used as the secondary antibody, and signal was developed by TMB substrate.

Biorbyt Ltd.

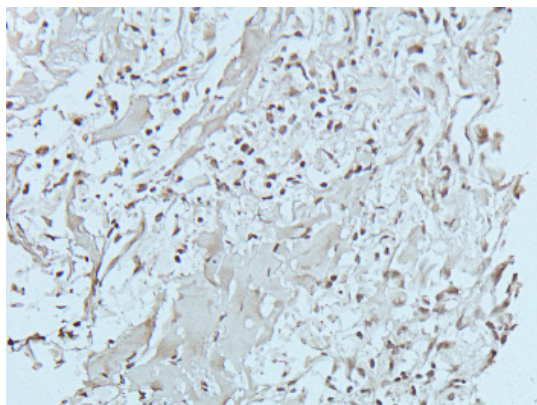
7 Signet Court, Swann Road
Cambridge
CB5 8LA
United Kingdom

Email: info@biorbyt.com, support@biorbyt.com
Phone: +44 (0)1223 859353 | Fax: +1 (415) 651-8558

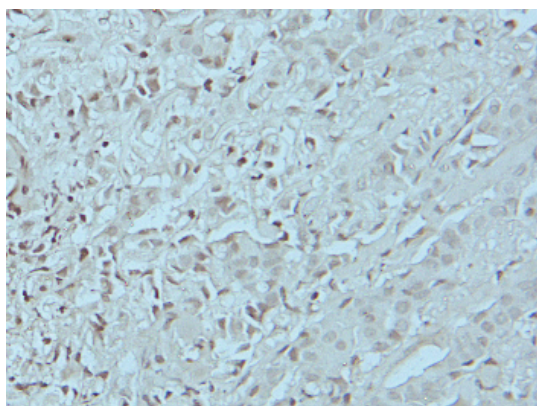
Biorbyt LLC

68 TW Alexander Drive
Research Triangle Park
Durham
NC 27713
United States

Email: info@biorbyt.com, support@biorbyt.com
Phone: +1 (415) 906-5211 | Fax: +1 (415) 651-8558



Immunohistochemical analysis of paraffin-embedded human breast cancer using FYN (Phospho-Y530) Rabbit Polyclonal Antibody orb213956 with dilution at 1:100.



Immunohistochemical analysis of paraffin-embedded human breast cancer using FYN (Phospho-Y530) Rabbit Polyclonal Antibody orb213956 with dilution at 1:100.

Biorbyt Ltd.

7 Signet Court, Swann Road
Cambridge
CB5 8LA
United Kingdom

Email: info@biorbyt.com, support@biorbyt.com

Phone: [+44 \(0\)1223 859353](tel:+44(0)1223859353) | Fax: [+1 \(415\) 651-8558](tel:+1(415)651-8558)

Biorbyt LLC

68 TW Alexander Drive
Research Triangle Park
Durham
NC 27713
United States

Email: info@biorbyt.com, support@biorbyt.com

Phone: [+1 \(415\) 906-5211](tel:+1(415)906-5211) | Fax: [+1 \(415\) 651-8558](tel:+1(415)651-8558)