

Product Datasheet

LSP1 Antibody (orb20459)

Catalog Number	orb20459
Category	Antibodies
Description	Goat polyclonal antibody to LSP1
Target	LSP1
Clonality	Polyclonal
Species/Host	Goat
Conjugation	Unconjugated
Reactivity	Human, Mouse
Predicted Reactivity	Bovine, Canine, Rat
Buffer/Preservatives	Supplied at 0.5 mg/ml in Tris saline, 0.02% sodium azide, pH 7.3 with 0.5% bovine serum albumin. Aliquot and store at -20°C. Minimize freezing and thawing.
Purification	Purified from goat serum by ammonium sulphate precipitation followed by antigen affinity chromatography using the immunizing peptide.
Protein Sequence	RYKFBVATGHGKYEKV
RRID	AB_10957877
MW	37.2; 30.2
Tested applications	ELISA, IHC, WB
Dilution range	ELISA: 1:16000, WB: 0.01-0.1 µg/ml, IHC-P: 3.75 µg/ml

Biorbyt Ltd.

7 Signet Court, Swann Road
Cambridge
CB5 8LA
United Kingdom

Email: info@biorbyt.com, support@biorbyt.com

Phone: [+44 \(0\)1223 859353](tel:+44(0)1223859353) | Fax: [+1 \(415\) 651-8558](tel:+1(415)651-8558)

Biorbyt LLC

68 TW Alexander Drive
Research Triangle Park
Durham
NC 27713
United States

Email: info@biorbyt.com, support@biorbyt.com

Phone: [+1 \(415\) 906-5211](tel:+1(415)906-5211) | Fax: [+1 \(415\) 651-8558](tel:+1(415)651-8558)

Application notes

ELISA: Peptide ELISA: antibody detection limit dilution 1:16000.WB: Approx 50kDa band observed in Human Lymph Node, Tonsil and Peripheral Blood Mononucleocytes lysates (calculated MW of 37.2kDa according to NP_002330.1). The observed molecular weight corresponds to earlier findings in literature with different antibodies (Liu et al, J Exp Med. 2005 Feb 7;201(3):409-18; PMID: 15684321). Recommended concentration: 0.05-0.2 µg/ml.

Storage

Maintain refrigerated at 2-8°C for up to 2 weeks. For long term storage store at -20°C in small aliquots to prevent freeze-thaw cycles.

Note

For research use only

Entrez

4046

Expiration Date

12 months from date of receipt.



Western blot analysis of Mouse Spleen lysate using LSP1 Antibody.



Western blot analysis of Daudi cell lysate using LSP1 Antibody

Biorbyt Ltd.

7 Signet Court, Swann Road
Cambridge
CB5 8LA
United Kingdom

Email: info@biorbyt.com, support@biorbyt.com

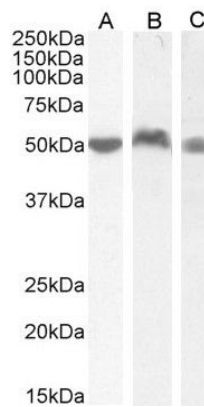
Phone: [+44 \(0\)1223 859353](tel:+44(0)1223859353) | Fax: [+1 \(415\) 651-8558](tel:+1(415)651-8558)

Biorbyt LLC

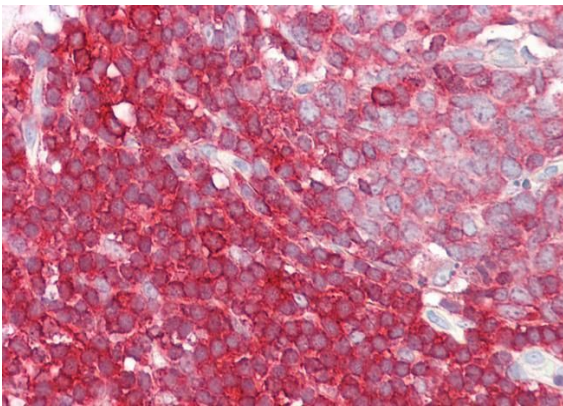
68 TW Alexander Drive
Research Triangle Park
Durham
NC 27713
United States

Email: info@biorbyt.com, support@biorbyt.com

Phone: [+1 \(415\) 906-5211](tel:+1(415)906-5211) | Fax: [+1 \(415\) 651-8558](tel:+1(415)651-8558)



Western blot analysis of Human PBM (Lane 1), (0.03ug/ml) Lymph Node (Lane 2) and Tonsil (Lane 3) lysate) using LSP1 Antibody



Immunohistochemical staining of Human Colon of LSP1 Antibody

Biorbyt Ltd.

7 Signet Court, Swann Road
Cambridge
CB5 8LA
United Kingdom

Email: info@biorbyt.com, support@biorbyt.com

Phone: [+44 \(0\)1223 859353](tel:+44(0)1223859353) | Fax: [+1 \(415\) 651-8558](tel:+1(415)651-8558)

Biorbyt LLC

68 TW Alexander Drive
Research Triangle Park
Durham
NC 27713
United States

Email: info@biorbyt.com, support@biorbyt.com

Phone: [+1 \(415\) 906-5211](tel:+1(415)906-5211) | Fax: [+1 \(415\) 651-8558](tel:+1(415)651-8558)