

Product Datasheet

IL2RA/CD25 Mouse Monoclonal Antibody (FITC) (orb1975501)

Catalog Number	orb1975501
Category	Antibodies
Description	IL2RA/CD25 Mouse Monoclonal Antibody (FITC) is an FITC conjugated antibody targeting IL2RA. This antibody is suitable for FC. It exhibits reactivity with Human samples.
Target	IL2RA
Clonality	Monoclonal
Species/Host	Mouse
Isotype	IgG
Conjugation	FITC
Reactivity	Human
Concentration	1mg/ml
Buffer/Preservatives	0.01M TBS (pH7.4) with 1% rAlbumin, 0.02% Proclin300 and 50% Glycerol.
Purification	Affinity purified by Protein G
Immunogen	KLH conjugated synthetic peptide derived from human IL2RA/CD25
Tested applications	FC
Dilution range	Flow-Cyt=1ug/Test
Antibody Type	Primary Antibody

Biorbyt Ltd.

7 Signet Court, Swann Road
Cambridge
CB5 8LA
United Kingdom

Email: info@biorbyt.com, support@biorbyt.com

Phone: [+44 \(0\)1223 859353](tel:+44(0)1223859353) | Fax: [+1 \(415\) 651-8558](tel:+1(415)651-8558)

Biorbyt LLC

68 TW Alexander Drive
Research Triangle Park
Durham
NC 27713-2847
United States

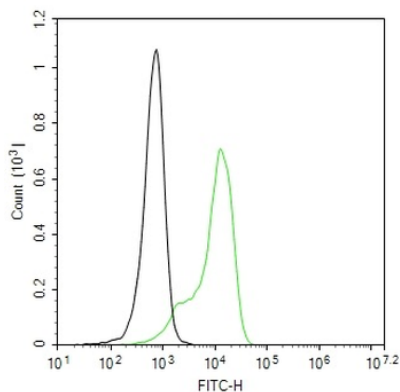
Email: info@biorbyt.com, support@biorbyt.com

Phone: [+1 \(415\) 906-5211](tel:+1(415)906-5211) | Fax: [+1 \(415\) 651-8558](tel:+1(415)651-8558)

Storage Shipped at 4°C. Store at -20°C for one year. Avoid repeated freeze/thaw cycles.

Note For research use only

Expiration Date 12 months from date of receipt.



Blank control: SR. Primary Antibody (green line): Mouse Anti-CD25 antibody, dilution: 1 ug/Test, Isotype control (orange line): Normal Mouse IgG, Protocol, The cells were incubated in 5% BSA to block non-specific protein-protein interactions for 30 min at room temperature. Cells stained with Primary Antibody for 30 min at room temperature. Acquisition of 20000 events was performed.

Biorbyt Ltd.

7 Signet Court, Swann Road
Cambridge
CB5 8LA
United Kingdom

Email: info@biorbyt.com, support@biorbyt.com

Phone: +44 (0)1223 859353 | Fax: +1 (415) 651-8558

Biorbyt LLC

68 TW Alexander Drive
Research Triangle Park
Durham
NC 27713-2847
United States

Email: info@biorbyt.com, support@biorbyt.com

Phone: +1 (415) 906-5211 | Fax: +1 (415) 651-8558