

Product Datasheet

Phospho-Rb (Ser807/811) rabbit mAb SureLight488 conjugate Antibody (orb1946308)

Catalog Number	orb1946308
Category	Antibodies
Description	<p>Retinoblastoma protein (Rb, phospho Rb) is a tumor suppressor protein that is inactivated in a number of diverse cancers. The antiproliferative activity of Rb is mediated by its ability to inhibit the transcription of genes that are required for cell cycle progression. Rb contains conserved sites that are phosphorylated by cyclin-dependent kinases (CDKs). CDK phosphorylation typically promotes protein-protein interactions through creation of a phospho-epitope that becomes structured upon binding its target. However Rb phosphorylation disrupts interactions with its binding partners. When it is phosphorylated, phospho Rb is inactivated and allows excessive cell growth that is seen in cancer cells. Sixteen potential sites for CDK-mediated phosphorylation exist in Rb and twelve of these sites have been shown to be phosphorylated in vivo.</p>
Clonality	Monoclonal
Species/Host	Rabbit
Isotype	Rabbit IgG1k
Conjugation	SureLight 488
Reactivity	Human, Mouse
Form/Appearance	Liquid
Buffer/Preservatives	1X PBS, 0.09% NaN3, 0.2% rAlbumin
Purification	Protein A+G

Biorbyt Ltd.

7 Signet Court, Swann Road
Cambridge
CB5 8LA
United Kingdom

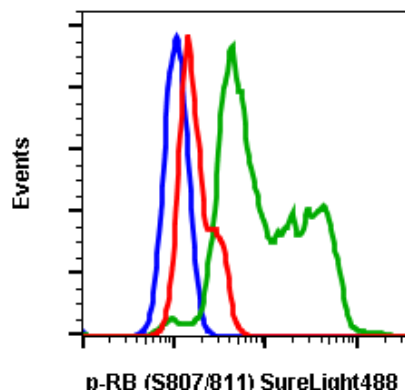
Email: info@biorbyt.com, support@biorbyt.com
Phone: [+44 \(0\)1223 859353](tel:+44(0)1223859353) | Fax: [+1 \(415\) 651-8558](tel:+1(415)651-8558)

Biorbyt LLC

68 TW Alexander Drive
Research Triangle Park
Durham
NC 27713
United States

Email: info@biorbyt.com, support@biorbyt.com
Phone: [+1 \(415\) 906-5211](tel:+1(415)906-5211) | Fax: [+1 \(415\) 651-8558](tel:+1(415)651-8558)

Immunogen	A synthetic phospho-peptide corresponding to residues surrounding Ser807/811 of human phospho Rb
UniProt ID	P06400
Tested applications	FC
Dilution range	For flow cytometric staining, the suggested use of this reagent is 5 μ L per million cells or 5 μ L per 100 μ L of staining volume. It is recommended that the reagent be titrated for optimal performance for each application.
Cross Reactivity	Predicted to work with mouse, rat and other homologues.
Clone Number	BF1
Storage	2-8°C
Note	For research use only
Expiration Date	12 months from date of receipt.



Flow cytometric analysis of U937 cells untreated and unstained as negative control (blue) or untreated and stained (green) or treated with lambda phosphatase and stained (red) using Phospho-Rb (Ser807/811) antibody RBS807S811-D9 SureLight488 conjugate. Cat. #orb1946308.

Biorbyt Ltd.

7 Signet Court, Swann Road
Cambridge
CB5 8LA
United Kingdom

Email: info@biorbyt.com, support@biorbyt.com
Phone: +44 (0)1223 859353 | Fax: +1 (415) 651-8558

Biorbyt LLC

68 TW Alexander Drive
Research Triangle Park
Durham
NC 27713
United States

Email: info@biorbyt.com, support@biorbyt.com
Phone: +1 (415) 906-5211 | Fax: +1 (415) 651-8558