

## Product Datasheet

# Phospho-CrkL (Tyr207) (G4) rabbit mAb Antibody (orb1946278)

<b>Catalog Number</b>	orb1946278
<b>Category</b>	Antibodies
<b>Description</b>	<p>CrkL (v-Crk sarcoma virus CT10 oncogene-like protein) is an adaptor protein composed of one Src Homology 2 (SH2) and two Src Homology 3 (SH3) domains separated by flexible linker sequences that act as building blocks to assemble multiprotein complexes (1). The Crk adaptor proteins (Crk and CrkL) constitute an integral part of a network of essential signal transduction pathways in humans and other organisms that act as major convergence points in tyrosine kinase signaling. CRKL is required for the normal development of multiple tissues that rely on fibroblast growth factor 8 (FGF8). Phosphorylation of Crk on Tyr 221 or CrkL on Tyr 207 causes intramolecular binding of the linker region to the SH2 domain, sequestering the SH2 and SH3N and preventing them from binding target proteins (2,3). Mounting evidence indicates that dysregulation of Crk proteins is associated with human diseases, including cancer and susceptibility to pathogen infections.</p>
<b>Clonality</b>	Monoclonal
<b>Species/Host</b>	Rabbit
<b>Isotype</b>	Rabbit IgG1k
<b>Conjugation</b>	Unconjugated
<b>Reactivity</b>	Human, Mouse
<b>Form/Appearance</b>	Liquid
<b>Concentration</b>	0.5 mg/mL
<b>Buffer/Preservatives</b>	1X PBS, 0.02% NaN <sub>3</sub> , 50% Glycerol, 0.1% rAlbumin

**Biorbyt Ltd.**

7 Signet Court, Swann Road  
Cambridge  
CB5 8LA  
United Kingdom

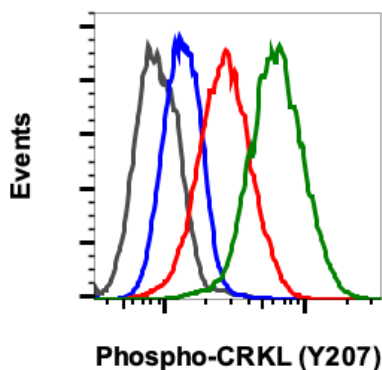
Email: [info@biorbyt.com](mailto:info@biorbyt.com), [support@biorbyt.com](mailto:support@biorbyt.com)  
Phone: [+44 \(0\)1223 859353](tel:+44(0)1223859353) | Fax: [+1 \(415\) 651-8558](tel:+1(415)651-8558)

**Biorbyt LLC**

68 TW Alexander Drive  
Research Triangle Park  
Durham  
NC 27713  
United States

Email: [info@biorbyt.com](mailto:info@biorbyt.com), [support@biorbyt.com](mailto:support@biorbyt.com)  
Phone: [+1 \(415\) 906-5211](tel:+1(415)906-5211) | Fax: [+1 \(415\) 651-8558](tel:+1(415)651-8558)

<b>Purification</b>	Protein A+G
<b>Immunogen</b>	A synthetic phospho-peptide corresponding to residues surrounding Tyr207 of human phospho CrkL
<b>UniProt ID</b>	<b>P46109</b>
<b>Tested applications</b>	FC, WB
<b>Dilution range</b>	1µg/mL - 0.001µg/mL. It is recommended that the reagent be titrated for optimal performance for each application. See product image legends for additional information.
<b>Cross Reactivity</b>	Predicted to work with mouse, rat, and other homologues.
<b>Clone Number</b>	CrkLY207-G4
<b>Storage</b>	Maintain refrigerated at 2-8°C for up to 2 weeks. For long term storage store at -20°C in small aliquots to prevent freeze-thaw cycles.
<b>Note</b>	For research use only
<b>Expiration Date</b>	12 months from date of receipt.



Flow cytometric analysis of K562 cells treated with imatinib (red) or treated with pervanadate (green) using Phospho-CRKL (Tyr207) (G4) Rabbit mAb CRKLY207-G4 #orb1946278 at 0.05 ug/mL, or concentration-matched Rabbit (G9) mAb IgG Isotype Control #orb1946241 for cells treated with imatinib (black) or treated with pervanadate (blue).

**Biorbyt Ltd.**

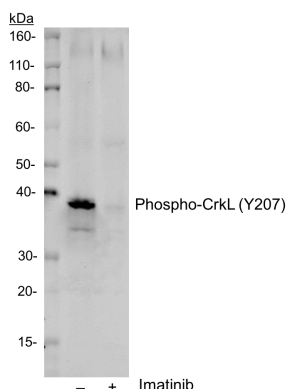
7 Signet Court, Swann Road  
Cambridge  
CB5 8LA  
United Kingdom

Email: [info@biorbyt.com](mailto:info@biorbyt.com), [support@biorbyt.com](mailto:support@biorbyt.com)  
Phone: +44 (0)1223 859353 | Fax: +1 (415) 651-8558

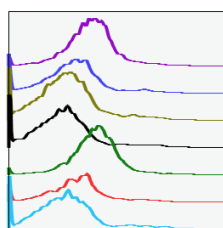
**Biorbyt LLC**

68 TW Alexander Drive  
Research Triangle Park  
Durham  
NC 27713  
United States

Email: [info@biorbyt.com](mailto:info@biorbyt.com), [support@biorbyt.com](mailto:support@biorbyt.com)  
Phone: +1 (415) 906-5211 | Fax: +1 (415) 651-8558

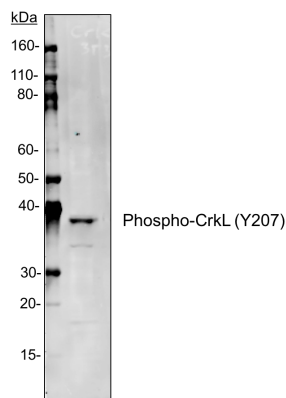


Western blot analysis of K562 cell extract untreated or treated with imatinib using 1ng/mL CrkL (Tyr207) antibody CrkLY207-G4. Cat. #orb1946278.



SampleID	Median: BL1.A
Pv G4 N	1712
Imat G4 N	1165
Pv G4 P	961
Imat G4 P	870
Pv G4	1887
Imat G4	1272
Imat 2' only	963

Peptide blocking flow cytometric analysis of K562 cells secondary antibody only negative control (light blue) or treated with imatinib (red) or treated with pervanadate (green) or imatinib and blocked with phospho-peptide (black) or pervanadate and blocked with phospho peptide (gold) or imatinib and blocked with non-phospho peptide (dark blue) or pervanadate and blocked with non-phospho peptide (purple) using Phospho-CrkL (Tyr207) antibody CrkLY207-G4 at 0.01µg/mL. Cat. #orb1946278.



Western blot analysis of NIH3T3 cell extract using 1µg/mL Phospho-CrkL (Tyr207) antibody CrkLY207-G4. Cat. #orb1946278.

**Biorbyt Ltd.**

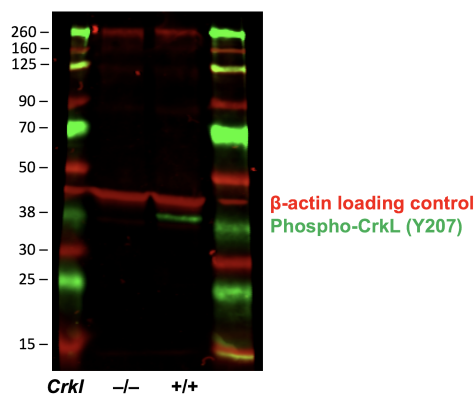
7 Signet Court, Swann Road  
Cambridge  
CB5 8LA  
United Kingdom

Email: [info@biorbyt.com](mailto:info@biorbyt.com), [support@biorbyt.com](mailto:support@biorbyt.com)  
Phone: +44 (0)1223 859353 | Fax: +1 (415) 651-8558

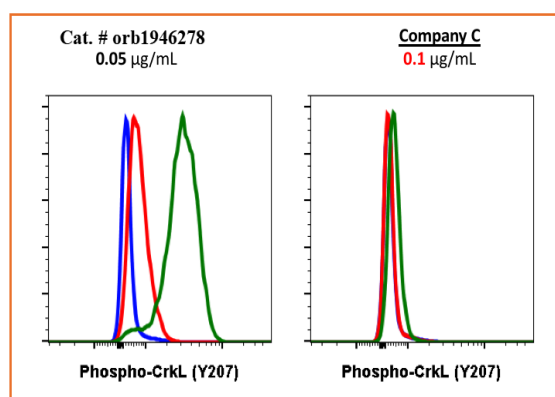
**Biorbyt LLC**

68 TW Alexander Drive  
Research Triangle Park  
Durham  
NC 27713  
United States

Email: [info@biorbyt.com](mailto:info@biorbyt.com), [support@biorbyt.com](mailto:support@biorbyt.com)  
Phone: +1 (415) 906-5211 | Fax: +1 (415) 651-8558



Western blot of E10.5 mouse wild-type (+/+) or Crkl knock out (-/-) whole embryos. The red channel was stained using a β-actin loading control and the green channel was stained using 1:500 dilution of Phospho-CrkL (Tyr207) antibody CrkLY207-G4 Cat. #orb1946278. Phospho CrkL antibody staining is absent in the knock out lysate.



Flow cytometric analysis of K562 cells secondary antibody only negative control (blue) or treated with imatinib (red) or with pervanadate (green) using 0.05 µg/mL of Phospho-CrkL (Tyr207) antibody CrkLY207-G4 (Cat. #orb1946278) or Company C antibody at 0.1ug/mL.

#### Biorbyt Ltd.

7 Signet Court, Swann Road  
Cambridge  
CB5 8LA  
United Kingdom

Email: [info@biorbyt.com](mailto:info@biorbyt.com), [support@biorbyt.com](mailto:support@biorbyt.com)  
Phone: +44 (0)1223 859353 | Fax: +1 (415) 651-8558

#### Biorbyt LLC

68 TW Alexander Drive  
Research Triangle Park  
Durham  
NC 27713  
United States

Email: [info@biorbyt.com](mailto:info@biorbyt.com), [support@biorbyt.com](mailto:support@biorbyt.com)  
Phone: +1 (415) 906-5211 | Fax: +1 (415) 651-8558