

Product Datasheet

Phospho-CrkL (Tyr207) (G4) rabbit mAb SureLight488 Conjugate Antibody (orb1946274)

Catalog Number	orb1946274
Category	Antibodies
Description	<p>CrkL (v-Crk sarcoma virus CT10 oncogene-like protein) is an adaptor protein composed of one Src Homology 2 (SH2) and two Src Homology 3 (SH3) domains separated by flexible linker sequences that act as building blocks to assemble multiprotein complexes (1). The Crk adaptor proteins (Crk and CrkL) constitute an integral part of a network of essential signal transduction pathways in humans and other organisms that act as major convergence points in tyrosine kinase signaling. CRKL is required for the normal development of multiple tissues that rely on fibroblast growth factor 8 (FGF8). Phosphorylation of Crk on Tyr 221 or CrkL on Tyr 207 causes intramolecular binding of the linker region to the SH2 domain, sequestering the SH2 and SH3N and preventing them from binding target proteins (2,3). Mounting evidence indicates that dysregulation of Crk proteins is associated with human diseases, including cancer and susceptibility to pathogen infections.</p>
Clonality	Monoclonal
Species/Host	Rabbit
Isotype	Rabbit IgG1k
Conjugation	SureLight 488
Reactivity	Human, Mouse
Form/Appearance	Liquid
Buffer/Preservatives	1X PBS, 0.09% NaN ₃ , 0.2% rAlbumin
Purification	Protein A+G

Biorbyt Ltd.

7 Signet Court, Swann Road
Cambridge
CB5 8LA
United Kingdom

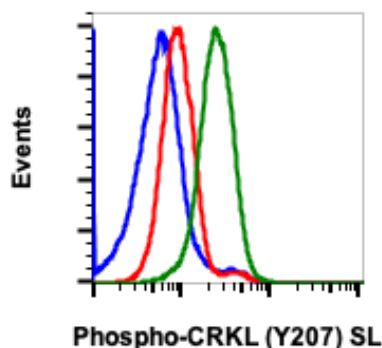
Email: info@biorbyt.com, support@biorbyt.com
Phone: [+44 \(0\)1223 859353](tel:+44(0)1223859353) | Fax: [+1 \(415\) 651-8558](tel:+1(415)651-8558)

Biorbyt LLC

68 TW Alexander Drive
Research Triangle Park
Durham
NC 27713
United States

Email: info@biorbyt.com, support@biorbyt.com
Phone: [+1 \(415\) 906-5211](tel:+1(415)906-5211) | Fax: [+1 \(415\) 651-8558](tel:+1(415)651-8558)

Immunogen	A synthetic phosphopeptide corresponding to residues surrounding Tyr207 of human phospho Crkl
UniProt ID	P46109
Tested applications	FC
Dilution range	For flow cytometric staining, the suggested use of this reagent is 5 μ L per million cells or 5 μ L per 100 μ L of staining volume. It is recommended that the reagent be titrated for optimal performance for each application.
Cross Reactivity	Predicted to work with mouse, rat and other homologues.
Clone Number	CrkLY207-G4
Storage	2-8°C
Note	For research use only
Expiration Date	12 months from date of receipt.



Flow cytometric analysis of K562 human myelogenous leukemia cells, treated with imatinib and unstained as negative control (blue) or treated with imatinib (red) or treated with pervanadate (green) and stained using Phospho-CRKL (Tyr207) antibody SureLight488 conjugate, CRKLY207-G4. Cat. #orb1946274.

Biorbyt Ltd.

7 Signet Court, Swann Road
Cambridge
CB5 8LA
United Kingdom

Email: info@biorbyt.com, support@biorbyt.com

Phone: +44 (0)1223 859353 | Fax: +1 (415) 651-8558

Biorbyt LLC

68 TW Alexander Drive
Research Triangle Park
Durham
NC 27713
United States

Email: info@biorbyt.com, support@biorbyt.com

Phone: +1 (415) 906-5211 | Fax: +1 (415) 651-8558