

## Product Datasheet

# Phospho-HS1 (Tyr397) (F12) rabbit mAb Antibody (orb1946044)

<b>Catalog Number</b>	orb1946044
<b>Category</b>	Antibodies
<b>Description</b>	<p>HS1 is expressed in lymphoid and hematopoietic cells, and is heavily post-translationally modified. HS1 deficient mouse models have demonstrated the protein's role in receptor-mediated apoptosis and proliferation. HS1 is phosphorylated at Tyr378 and Tyr397 by the kinase Syk, providing a high-affinity binding site for SH2 domains from the Src family. Following this interaction, HS1 is then phosphorylated at Tyr222 by c-Fgr, Lyn, and Fyn kinases. HS1 plays an important role in T cell signaling, where HS1 phosphorylation recruits and activates Vav1 at the immune synapse. As a homolog of the actin binding protein cortactin, HS1 has been shown to mediate neutrophil chemotaxis through phosphorylation of tyrosines 222, 378, and 397.</p>
<b>Clonality</b>	Monoclonal
<b>Species/Host</b>	Rabbit
<b>Isotype</b>	Rabbit IgG1k
<b>Conjugation</b>	Unconjugated
<b>Reactivity</b>	Human, Mouse
<b>Form/Appearance</b>	Liquid
<b>Concentration</b>	0.5 mg/mL
<b>Buffer/Preservatives</b>	1X PBS, 0.02% NaN <sub>3</sub> , 50% Glycerol, 0.1% rAlbumin
<b>Purification</b>	Protein A+G

**Biorbyt Ltd.**

7 Signet Court, Swann Road  
Cambridge  
CB5 8LA  
United Kingdom

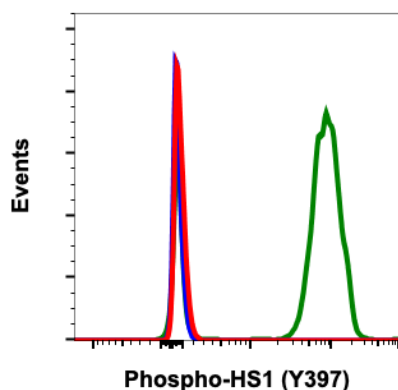
Email: [info@biorbyt.com](mailto:info@biorbyt.com), [support@biorbyt.com](mailto:support@biorbyt.com)  
Phone: [+44 \(0\)1223 859353](tel:+44(0)1223859353) | Fax: [+1 \(415\) 651-8558](tel:+1(415)651-8558)

**Biorbyt LLC**

68 TW Alexander Drive  
Research Triangle Park  
Durham  
NC 27713  
United States

Email: [info@biorbyt.com](mailto:info@biorbyt.com), [support@biorbyt.com](mailto:support@biorbyt.com)  
Phone: [+1 \(415\) 906-5211](tel:+1(415)906-5211) | Fax: [+1 \(415\) 651-8558](tel:+1(415)651-8558)

<b>Immunogen</b>	A synthetic phospho-peptide corresponding to residues surrounding Tyr397 of human phospho HS1
<b>UniProt ID</b>	<b>P14317</b>
<b>Tested applications</b>	FC, WB
<b>Dilution range</b>	1µg/mL - 0.001µg/mL. It is recommended that the reagent be titrated for optimal performance for each application. See product image legends for additional information.
<b>Cross Reactivity</b>	Predicted to work with mouse, rat and other homologues.
<b>Clone Number</b>	HS1Y397-F12
<b>Storage</b>	Maintain refrigerated at 2-8°C for up to 2 weeks. For long term storage store at -20°C in small aliquots to prevent freeze-thaw cycles.
<b>Note</b>	For research use only
<b>Expiration Date</b>	12 months from date of receipt.



Flow cytometric analysis of Ramos cells secondary antibody only negative control (blue) or untreated (red) or treated with pervanadate (green) using Phospho-HS1 (Tyr397) antibody HS1Y397-F12 at 0.01µg/mL. Cat. #orb1946044.

**Biorbyt Ltd.**

7 Signet Court, Swann Road  
Cambridge  
CB5 8LA  
United Kingdom

Email: [info@biorbyt.com](mailto:info@biorbyt.com), [support@biorbyt.com](mailto:support@biorbyt.com)

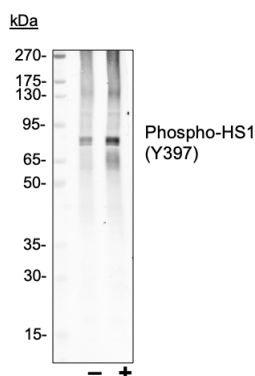
Phone: +44 (0)1223 859353 | Fax: +1 (415) 651-8558

**Biorbyt LLC**

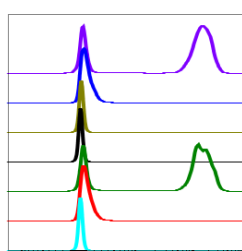
68 TW Alexander Drive  
Research Triangle Park  
Durham  
NC 27713  
United States

Email: [info@biorbyt.com](mailto:info@biorbyt.com), [support@biorbyt.com](mailto:support@biorbyt.com)

Phone: +1 (415) 906-5211 | Fax: +1 (415) 651-8558

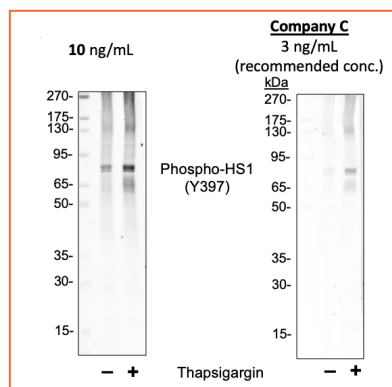


Western blot analysis of Ramos cell extract, untreated or treated with 300 nM Thapsigargin for 30 min using HS1 (Tyr397) antibody HS1Y397-F12 at 0.01 µg/mL. Cat. #orb1946044.



IgG	Treatment	Peptide Block	Median : BL1-A
F12	Pv	Non-phos.	117301
F12	Ctrl	Non-phos.	863
F12	Pv	Phospho.	355
F12	Ctrl	Phospho.	288
F12	Pv	-	115459
F12	Ctrl	-	856
I' only	Ctrl	-	253

Peptide blocking flow cytometric analysis of Ramos cells secondary antibody only negative control (light blue) or untreated (red) or treated with pervandadate (green) or untreated and blocked with phospho-peptide (black) or treated and blocked with phospho peptide (gold) or untreated and blocked with non-phospho peptide (dark blue) or treated and blocked with non-phospho peptide (purple) using Phospho-HS1 (Tyr397) antibody HS1Y397-F12 at 0.01µg/mL. Cat. #orb1946044.



Western blot analysis of Ramos cell extract untreated or treated with 300 nM thapsigargin for 30 min using 10 ng/mL Phospho-HS1 (Tyr397) antibody HS1Y397-F12 at 0.01µg/mL. Cat. #orb1946044 or Company C antibody at 3 ng/mL (manufacturer's recommended concentration) developed using the same exposure.

**Biorbyt Ltd.**

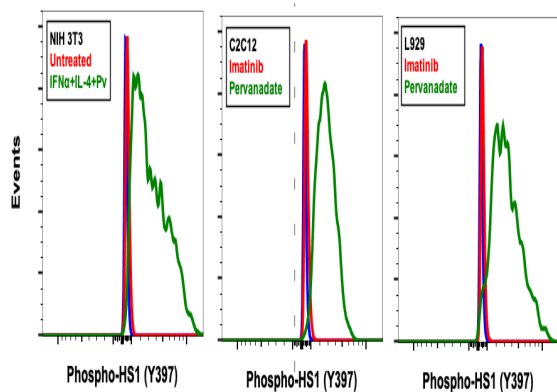
7 Signet Court, Swann Road  
Cambridge  
CB5 8LA  
United Kingdom

Email: [info@biorbyt.com](mailto:info@biorbyt.com), [support@biorbyt.com](mailto:support@biorbyt.com)  
Phone: +44 (0)1223 859353 | Fax: +1 (415) 651-8558

**Biorbyt LLC**

68 TW Alexander Drive  
Research Triangle Park  
Durham  
NC 27713  
United States

Email: [info@biorbyt.com](mailto:info@biorbyt.com), [support@biorbyt.com](mailto:support@biorbyt.com)  
Phone: +1 (415) 906-5211 | Fax: +1 (415) 651-8558



Flow cytometric analysis of mouse cells secondary antibody only negative control (blue) or control (red) or stimulated (green) using Phospho-HS1 (Tyr397) antibody HS1Y397-F12 at 0.01 $\mu$ g/mL. Cat. #orb1946044.

**Biorbyt Ltd.**

7 Signet Court, Swann Road  
Cambridge  
CB5 8LA  
United Kingdom

Email: [info@biorbyt.com](mailto:info@biorbyt.com), [support@biorbyt.com](mailto:support@biorbyt.com)

Phone: +44 (0)1223 859353 | Fax: +1 (415) 651-8558

**Biorbyt LLC**

68 TW Alexander Drive  
Research Triangle Park  
Durham  
NC 27713  
United States

Email: [info@biorbyt.com](mailto:info@biorbyt.com), [support@biorbyt.com](mailto:support@biorbyt.com)

Phone: +1 (415) 906-5211 | Fax: +1 (415) 651-8558