

## Product Datasheet

### TRAF2 Antibody (orb19446)

<b>Catalog Number</b>	orb19446
<b>Category</b>	Antibodies
<b>Description</b>	Goat polyclonal antibody to TRAF2
<b>Target</b>	TRAF2
<b>Clonality</b>	Polyclonal
<b>Species/Host</b>	Goat
<b>Conjugation</b>	Unconjugated
<b>Reactivity</b>	Human, Mouse
<b>Predicted Reactivity</b>	Bovine, Canine, Rat
<b>Buffer/Preservatives</b>	Supplied at 0.5 mg/ml in Tris saline, 0.02% sodium azide, pH 7.3 with 0.5% bovine serum albumin. Aliquot and store at -20°C. Minimize freezing and thawing.
<b>Purification</b>	Purified from goat serum by ammonium sulphate precipitation followed by antigen affinity chromatography using the immunizing peptide.
<b>Protein Sequence</b>	KMEAKNSYVRDD
<b>RRID</b>	AB_10755927
<b>MW</b>	55.9
<b>Tested applications</b>	ELISA, FC, IF, IHC, WB
<b>Dilution range</b>	ELISA: 1:128000, WB: 0.1-0.5 µg/ml, IHC-P: 3.75 µg/ml

#### Biorbyt Ltd.

7 Signet Court, Swann Road  
Cambridge  
CB5 8LA  
United Kingdom

Email: [info@biorbyt.com](mailto:info@biorbyt.com), [support@biorbyt.com](mailto:support@biorbyt.com)

Phone: [+44 \(0\)1223 859353](tel:+44(0)1223859353) | Fax: [+1 \(415\) 651-8558](tel:+1(415)651-8558)

#### Biorbyt LLC

68 TW Alexander Drive  
Research Triangle Park  
Durham  
NC 27713-2847  
United States

Email: [info@biorbyt.com](mailto:info@biorbyt.com), [support@biorbyt.com](mailto:support@biorbyt.com)

Phone: [+1 \(415\) 906-5211](tel:+1(415)906-5211) | Fax: [+1 \(415\) 651-8558](tel:+1(415)651-8558)

**Application notes**

ELISA: Peptide ELISA: antibody detection limit dilution 1:128000.WB: Approx 50kDa band observed in Human Ovary lysates (calculated MW of 55.9kDa according to NP\_066961.2). In transfected HEK293 transiently expressing Human TRAF2 a band of approx. 60kDa is observed. This band is not observed in the non-transfected HEK293. The endogenous 48kDa protein is observed in both. Recommended concentration: 0.1-0.3 µg/ml.

**Storage**

Maintain refrigerated at 2-8°C for up to 2 weeks. For long term storage store at -20°C in small aliquots to prevent freeze-thaw cycles.

**Note**

For research use only

**Entrez**

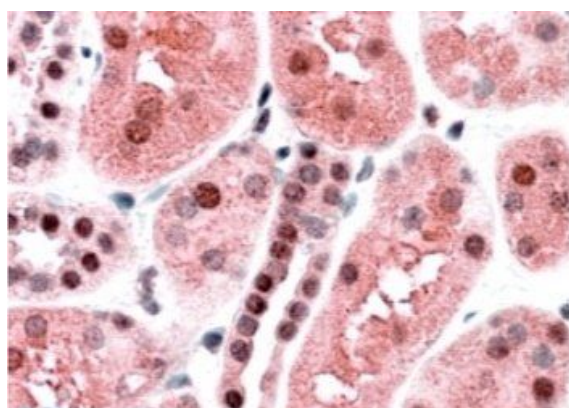
**7186**

**Expiration Date**

12 months from date of receipt.



Western blot analysis of human ovary lysate using TRAF2 antibody



Immunohistochemical staining of Human Kidney using TRAF2 antibody

**Biorbyt Ltd.**

7 Signet Court, Swann Road  
Cambridge  
CB5 8LA  
United Kingdom

Email: [info@biorbyt.com](mailto:info@biorbyt.com), [support@biorbyt.com](mailto:support@biorbyt.com)

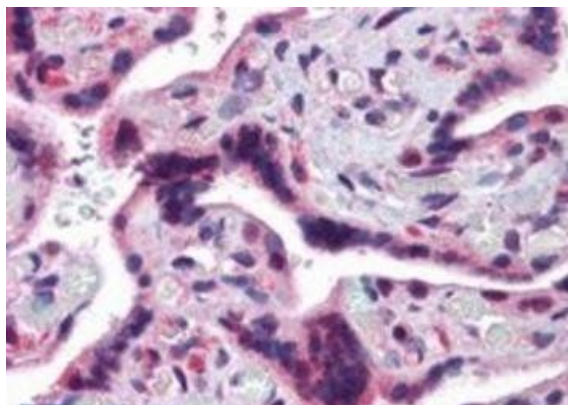
Phone: +44 (0)1223 859353 | Fax: +1 (415) 651-8558

**Biorbyt LLC**

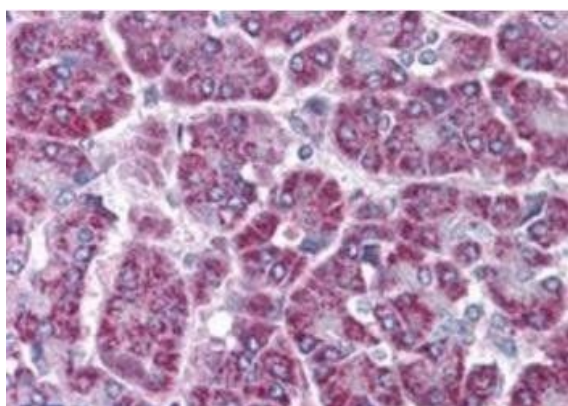
68 TW Alexander Drive  
Research Triangle Park  
Durham  
NC 27713-2847  
United States

Email: [info@biorbyt.com](mailto:info@biorbyt.com), [support@biorbyt.com](mailto:support@biorbyt.com)

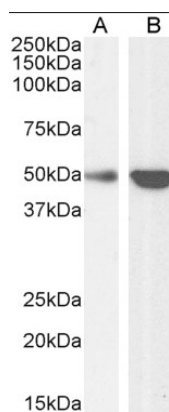
Phone: +1 (415) 906-5211 | Fax: +1 (415) 651-8558



Immunohistochemical staining of Human Placenta using TRAF2 antibody



Immunohistochemical staining of Human Pancreas using TRAF2 antibody



Western blot analysis of HepG2 cell lysate using TRAF2 antibody.

**Biorbyt Ltd.**

7 Signet Court, Swann Road  
Cambridge  
CB5 8LA  
United Kingdom

Email: [info@biorbyt.com](mailto:info@biorbyt.com), [support@biorbyt.com](mailto:support@biorbyt.com)

Phone: [+44 \(0\)1223 859353](tel:+44(0)1223859353) | Fax: [+1 \(415\) 651-8558](tel:+1(415)651-8558)

**Biorbyt LLC**

68 TW Alexander Drive  
Research Triangle Park  
Durham  
NC 27713-2847  
United States

Email: [info@biorbyt.com](mailto:info@biorbyt.com), [support@biorbyt.com](mailto:support@biorbyt.com)

Phone: [+1 \(415\) 906-5211](tel:+1(415)906-5211) | Fax: [+1 \(415\) 651-8558](tel:+1(415)651-8558)