

Product Datasheet

TNK1 Antibody (orb1939397)

Catalog Number	orb1939397
Category	Antibodies
Description	Mouse Monoclonal Antibody (Mab)
Target	TNK1 {ECO:0000312 EMBL:AAC99412.1}
Clonality	Monoclonal
Species/Host	Mouse
Isotype	IgG1,K
Conjugation	Unconjugated
Reactivity	Mouse
Form/Appearance	Purified monoclonal antibody supplied in PBS with 0.09% (W/V) sodium azide. This antibody is purified through a protein G column, followed by dialysis against PBS.
Immunogen	This TNK1 monoclonal antibody is generated from mouse immunized with TNK1 recombinant protein.
UniProt ID	Q13470
MW	72468 Da
Tested applications	WB
Dilution range	WB - 1:100-1000
Antibody Type	Primary Antibody

Biorbyt Ltd.

7 Signet Court, Swann Road
Cambridge
CB5 8LA
United Kingdom

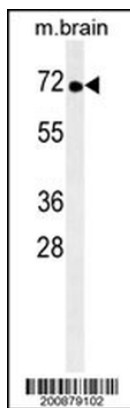
Email: info@biorbyt.com, support@biorbyt.com
Phone: [+44 \(0\)1223 859353](tel:+44(0)1223859353) | Fax: [+1 \(415\) 651-8558](tel:+1(415)651-8558)

Biorbyt LLC

68 TW Alexander Drive
Research Triangle Park
Durham
NC 27713
United States

Email: info@biorbyt.com, support@biorbyt.com
Phone: [+1 \(415\) 906-5211](tel:+1(415)906-5211) | Fax: [+1 \(415\) 651-8558](tel:+1(415)651-8558)

Clone Number	B392EV9X7X6
Storage	Maintain refrigerated at 2-8°C for up to 2 weeks. For long term storage store at -20°C in small aliquots to prevent freeze-thaw cycles
Note	For research use only
NCBI	NP_003976.2, NP_001238831.1
Expiration Date	12 months from date of receipt.



TNK1 Antibody western blot analysis in mouse brain tissue lysates (35 µg/lane). This demonstrates the TNK1 antibody detected the TNK1 protein (arrow).

Biorbyt Ltd.

7 Signet Court, Swann Road
Cambridge
CB5 8LA
United Kingdom

Email: info@biorbyt.com, support@biorbyt.com

Phone: [+44 \(0\)1223 859353](tel:+44(0)1223859353) | Fax: [+1 \(415\) 651-8558](tel:+1(415)651-8558)

Biorbyt LLC

68 TW Alexander Drive
Research Triangle Park
Durham
NC 27713
United States

Email: info@biorbyt.com, support@biorbyt.com

Phone: [+1 \(415\) 906-5211](tel:+1(415)906-5211) | Fax: [+1 \(415\) 651-8558](tel:+1(415)651-8558)