

Product Datasheet

SYP Antibody (C-term) (orb1939338)

Catalog Number	orb1939338
Category	Antibodies
Description	Mouse Monoclonal Antibody (Mab)
Target	SYP
Clonality	Monoclonal
Species/Host	Mouse
Isotype	IgM,k
Conjugation	Unconjugated
Reactivity	Mouse
Predicted Reactivity	Rat
Form/Appearance	Purified monoclonal antibody supplied in PBS with 0.09% (W/V) sodium azide. This antibody is prepared by Euglobin precipitation followed by dialysis against PBS.
Immunogen	This SYP antibody is generated from mice immunized with a KLH conjugated synthetic peptide between 225-253 amino acids from the C-terminal region of human SYP. Antigen Region: 225-253 aa.
UniProt ID	P08247
MW	33845 Da
Tested applications	WB
Dilution range	WB - 1:100

Biorbyt Ltd.

7 Signet Court, Swann Road
Cambridge
CB5 8LA
United Kingdom

Email: info@biorbyt.com, support@biorbyt.com

Phone: [+44 \(0\)1223 859353](tel:+44(0)1223859353) | Fax: [+1 \(415\) 651-8558](tel:+1(415)651-8558)

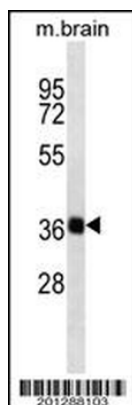
Biorbyt LLC

68 TW Alexander Drive
Research Triangle Park
Durham
NC 27713
United States

Email: info@biorbyt.com, support@biorbyt.com

Phone: [+1 \(415\) 906-5211](tel:+1(415)906-5211) | Fax: [+1 \(415\) 651-8558](tel:+1(415)651-8558)

Antibody Type	Primary Antibody
Clone Number	B410EV45X6X6
Storage	Maintain refrigerated at 2-8°C for up to 2 weeks. For long term storage store at -20°C in small aliquots to prevent freeze-thaw cycles
Note	For research use only
NCBI	NP_003170.1
Expiration Date	12 months from date of receipt.



SYP Antibody (C-term) western blot analysis in mouse brain tissue lysates (35 µg/lane). This demonstrates the SYP antibody detected the SYP protein (arrow).

Biorbyt Ltd.

7 Signet Court, Swann Road
Cambridge
CB5 8LA
United Kingdom

Email: info@biorbyt.com, support@biorbyt.com

Phone: [+44 \(0\)1223 859353](tel:+44(0)1223859353) | Fax: [+1 \(415\) 651-8558](tel:+1(415)651-8558)

Biorbyt LLC

68 TW Alexander Drive
Research Triangle Park
Durham
NC 27713
United States

Email: info@biorbyt.com, support@biorbyt.com

Phone: [+1 \(415\) 906-5211](tel:+1(415)906-5211) | Fax: [+1 \(415\) 651-8558](tel:+1(415)651-8558)