

Product Datasheet

TLE1 Antibody (Center) (orb1939310)

| | |
|----------------------------|--|
| Catalog Number | orb1939310 |
| Category | Antibodies |
| Description | Mouse Monoclonal Antibody (Mab) |
| Target | TLE1 |
| Clonality | Monoclonal |
| Species/Host | Mouse |
| Isotype | IgG1 |
| Conjugation | Unconjugated |
| Reactivity | Human |
| Form/Appearance | Purified monoclonal antibody supplied in PBS with 0.09% (W/V) sodium azide. This antibody is purified through a protein G column, followed by dialysis against PBS. |
| Immunogen | This TLE1 antibody is generated from mice immunized with a KLH conjugated synthetic peptide between 199-228 amino acids from the Central region of human TLE1. Antigen Region: 199-228 aa. |
| UniProt ID | Q04724 |
| MW | 83201 Da |
| Tested applications | WB |
| Dilution range | WB - 1:500-1000 |
| Antibody Type | Primary Antibody |

Biorbyt Ltd.

7 Signet Court, Swann Road
Cambridge
CB5 8LA
United Kingdom

Email: info@biorbyt.com, support@biorbyt.com

Phone: [+44 \(0\)1223 859353](tel:+44(0)1223859353) | Fax: [+1 \(415\) 651-8558](tel:+1(415)6518558)

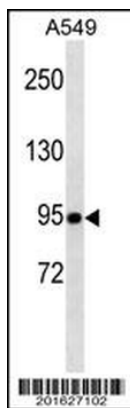
Biorbyt LLC

68 TW Alexander Drive
Research Triangle Park
Durham
NC 27713
United States

Email: info@biorbyt.com, support@biorbyt.com

Phone: [+1 \(415\) 906-5211](tel:+1(415)9065211) | Fax: [+1 \(415\) 651-8558](tel:+1(415)6518558)

| | |
|------------------------|--|
| Clone Number | B503EV30X7X3 |
| Storage | Maintain refrigerated at 2-8°C for up to 2 weeks. For long term storage store at -20°C in small aliquots to prevent freeze-thaw cycles |
| Note | For research use only |
| NCBI | NP_005068.2 |
| Expiration Date | 12 months from date of receipt. |



TLE1 Antibody (Center) western blot analysis in A549 cell line lysates (35 µg/lane). This demonstrates the TLE1 antibody detected the TLE1 protein (arrow).

Biorbyt Ltd.

7 Signet Court, Swann Road
Cambridge
CB5 8LA
United Kingdom

Email: info@biorbyt.com, support@biorbyt.com

Phone: [+44 \(0\)1223 859353](tel:+44(0)1223859353) | Fax: [+1 \(415\) 651-8558](tel:+1(415)651-8558)

Biorbyt LLC

68 TW Alexander Drive
Research Triangle Park
Durham
NC 27713
United States

Email: info@biorbyt.com, support@biorbyt.com

Phone: [+1 \(415\) 906-5211](tel:+1(415)906-5211) | Fax: [+1 \(415\) 651-8558](tel:+1(415)651-8558)