

Product Datasheet

Nephrin (Y1210) antibody (orb1938998)

Catalog Number	orb1938998
Category	Antibodies
Description	Affinity Purified Rabbit Polyclonal Antibody (Pab)
Target	NPHS1
Clonality	Polyclonal
Species/Host	Rabbit
Isotype	Rabbit IgG
Conjugation	Unconjugated
Reactivity	Human, Mouse
Form/Appearance	Purified polyclonal antibody supplied in PBS with 0.09% (W/V) sodium azide. This antibody is purified through a protein A column, followed by peptide affinity purification.
Immunogen	This Nephrin antibody is generated from rabbits immunized with a KLH conjugated synthetic peptide between 1191-1219 amino acids from human Nephrin. Antigen Region: 1191-1219 aa.
UniProt ID	O60500
MW	134742 Da
Tested applications	FC, WB
Dilution range	WB - 1:2000, FC - 1:10-50
Antibody Type	Primary Antibody

Biorbyt Ltd.

7 Signet Court, Swann Road
Cambridge
CB5 8LA
United Kingdom

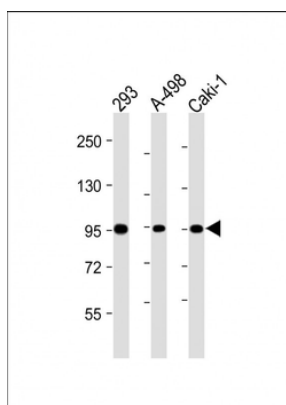
Email: info@biorbyt.com, support@biorbyt.com
Phone: [+44 \(0\)1223 859353](tel:+44(0)1223859353) | Fax: [+1 \(415\) 651-8558](tel:+1(415)651-8558)

Biorbyt LLC

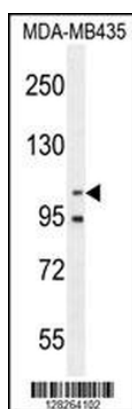
68 TW Alexander Drive
Research Triangle Park
Durham
NC 27713-2847
United States

Email: info@biorbyt.com, support@biorbyt.com
Phone: [+1 \(415\) 906-5211](tel:+1(415)906-5211) | Fax: [+1 \(415\) 651-8558](tel:+1(415)651-8558)

Storage	Maintain refrigerated at 2-8°C for up to 2 weeks. For long term storage store at -20°C in small aliquots to prevent freeze-thaw cycles
Note	For research use only
NCBI	NP_004637.1
Expiration Date	12 months from date of receipt.



All lanes: Anti-Nephrin (Y1210) antibody at 1:2000 dilution. Lane 1: 293 whole cell lysate. Lane 2: A-498 whole cell lysate. Lane 3: Caki-1 whole cell lysate. Lysates/proteins at 20 µg per lane. Secondary Goat Anti-Rabbit IgG, (H+L), Peroxidase conjugated at 1/10000 dilution. Predicted band size: 135 kDa. Blocking/Dilution buffer: 5% NFDM/TBST.



Nephrin (Y1210) antibody western blot analysis in MDA-MB435 cell line lysates (35 ug/lane). This demonstrates the Nephrin antibody detected the Nephrin protein (arrow).

Biorbyt Ltd.

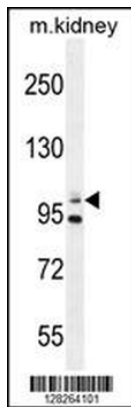
7 Signet Court, Swann Road
Cambridge
CB5 8LA
United Kingdom

Email: info@biorbyt.com, support@biorbyt.com
Phone: [+44 \(0\)1223 859353](tel:+44(0)1223859353) | Fax: [+1 \(415\) 651-8558](tel:+1(415)651-8558)

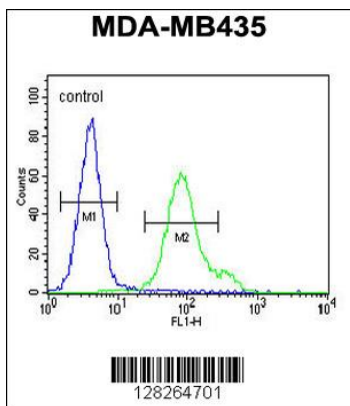
Biorbyt LLC

68 TW Alexander Drive
Research Triangle Park
Durham
NC 27713-2847
United States

Email: info@biorbyt.com, support@biorbyt.com
Phone: [+1 \(415\) 906-5211](tel:+1(415)906-5211) | Fax: [+1 \(415\) 651-8558](tel:+1(415)651-8558)



Nephrin (Y1210) antibody western blot analysis in mouse kidney tissue lysates (35 ug/lane). This demonstrates the Nephrin antibody detected the Nephrin protein (arrow).



Nephrin Antibody (Y1210) flow cytometric analysis of MDA-MB435 cells (right histogram) compared to a negative control cell (left histogram). FITC-conjugated goat-anti-rabbit secondary antibodies were used for the analysis.

Biorbyt Ltd.

7 Signet Court, Swann Road
Cambridge
CB5 8LA
United Kingdom

Email: info@biorbyt.com, support@biorbyt.com

Phone: +44 (0)1223 859353 | Fax: +1 (415) 651-8558

Biorbyt LLC

68 TW Alexander Drive
Research Triangle Park
Durham
NC 27713-2847
United States

Email: info@biorbyt.com, support@biorbyt.com

Phone: +1 (415) 906-5211 | Fax: +1 (415) 651-8558