

Product Datasheet

SMYD2 Antibody (N-term) (orb1938982)

Catalog Number	orb1938982
Category	Antibodies
Description	Purified Rabbit Polyclonal Antibody (Pab)
Target	SMYD2
Clonality	Polyclonal
Species/Host	Rabbit
Isotype	Rabbit IgG
Conjugation	Unconjugated
Reactivity	Human, Mouse
Predicted Reactivity	Rat
Form/Appearance	Purified polyclonal antibody supplied in PBS with 0.09% (W/V) sodium azide. This antibody is prepared by Saturated Ammonium Sulfate (SAS) precipitation followed by dialysis against PBS.
Immunogen	This SMYD2 antibody is generated from rabbits immunized with a KLH conjugated synthetic peptide between 120-152 amino acids from the N-terminal region of human SMYD2. Antigen Region: 120-152 aa.
UniProt ID	Q9NRG4
MW	49688 Da
Tested applications	WB
Dilution range	WB - 1:2000

Biorbyt Ltd.

7 Signet Court, Swann Road
Cambridge
CB5 8LA
United Kingdom

Email: info@biorbyt.com, support@biorbyt.com

Phone: [+44 \(0\)1223 859353](tel:+44(0)1223859353) | Fax: [+1 \(415\) 651-8558](tel:+1(415)651-8558)

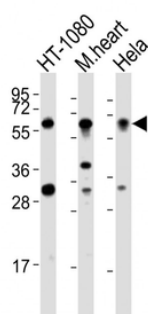
Biorbyt LLC

68 TW Alexander Drive
Research Triangle Park
Durham
NC 27713
United States

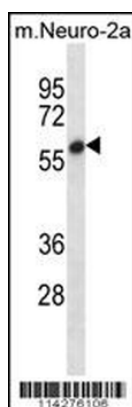
Email: info@biorbyt.com, support@biorbyt.com

Phone: [+1 \(415\) 906-5211](tel:+1(415)906-5211) | Fax: [+1 \(415\) 651-8558](tel:+1(415)651-8558)

Antibody Type	Primary Antibody
Storage	Maintain refrigerated at 2-8°C for up to 2 weeks. For long term storage store at -20°C in small aliquots to prevent freeze-thaw cycles
Note	For research use only
NCBI	NP_064582.2
Expiration Date	12 months from date of receipt.



All lanes: Anti-SMYD2 Antibody (N-term) at 1:2000 dilution. Lane 1: HT-1080 whole cell lysates. Lane 2: mouse heart lysates. Lane 3: HeLa whole cell lysates. Lysates/proteins at 20 µg per lane. Secondary Goat Anti-Rabbit IgG, (H+L), Peroxidase conjugated at 1/10000 dilution. Predicted band size: 50 kDa. Blocking/Dilution buffer: 5% NFDM/TBST.



SMYD2 Antibody (N-term) western blot analysis in mouse Neuro-2a cell line lysates (35 ug/lane). This demonstrates the SMYD2 antibody detected the SMYD2 protein (arrow).

Biorbyt Ltd.

7 Signet Court, Swann Road
Cambridge
CB5 8LA
United Kingdom

Email: info@biorbyt.com, support@biorbyt.com

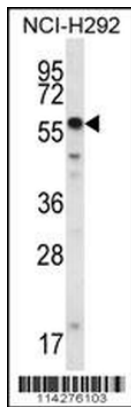
Phone: +44 (0)1223 859353 | Fax: +1 (415) 651-8558

Biorbyt LLC

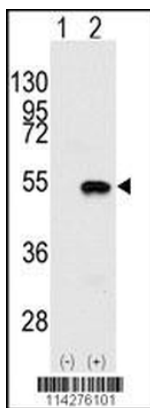
68 TW Alexander Drive
Research Triangle Park
Durham
NC 27713
United States

Email: info@biorbyt.com, support@biorbyt.com

Phone: +1 (415) 906-5211 | Fax: +1 (415) 651-8558



SMYD2 Antibody (N-term) western blot analysis in NCI-H292 cell line lysates (35 ug/lane). This demonstrates the SMYD2 antibody detected the SMYD2 protein (arrow).



Western blot analysis of SYMD2 (arrow) using rabbit polyclonal SYMD2 Antibody (N-term). 293 cell lysates (2 ug/lane) either nontransfected (Lane 1) or transiently transfected with the SYMD2 gene (Lane 2).

Biorbyt Ltd.

7 Signet Court, Swann Road
Cambridge
CB5 8LA
United Kingdom

Email: info@biorbyt.com, support@biorbyt.com

Phone: +44 (0)1223 859353 | Fax: +1 (415) 651-8558

Biorbyt LLC

68 TW Alexander Drive
Research Triangle Park
Durham
NC 27713
United States

Email: info@biorbyt.com, support@biorbyt.com

Phone: +1 (415) 906-5211 | Fax: +1 (415) 651-8558